



Woodcote Road, Epsom

Guide Price **£675,000**



Woodcote Road

Epsom

Charming 2-bed detached bungalow with no chain. Bright reception, spacious kitchen, 2 double beds, private driveway, garden. Ideal location near town, station, and Rosebery Park. Viewing recommended - call now!

Council Tax band: F

Tenure: Freehold

EPC Energy Efficiency Rating: E

EPC Environmental Impact Rating: E

- No Onward Chain
- Detached Bungalow
- Bright & Spacious Reception
- Kitchen
- Two Double Bedrooms
- Family Bathroom
- Private Driveway
- Secluded Garden
- Short Walk To Town Centre & Station



Nestled in a desirable location in the popular Woodcote area of Epsom, this charming 2 bedroom detached bungalow presents a unique opportunity with the advantage of no onward chain.

Upon entering, residents are greeted by a bright and spacious reception area with feature fireplace that overlooks the garden, a good sized kitchen that offers a wealth of storage, two generously proportioned double bedrooms, the master with fitted wardrobes, and a family bathroom.

A highlight of this property is the private driveway, providing ample parking for several vehicles. Whilst to the rear is a delightful secluded garden that offers a perfect setting for alfresco dining or to relax and unwind.

Residents will appreciate the properties location, being within just a few minutes walk to the town centre and station, making commuting and daily errands a breeze, whilst Rosebery Park is just a stones throw away offering the perfect setting for a leisurely stroll.

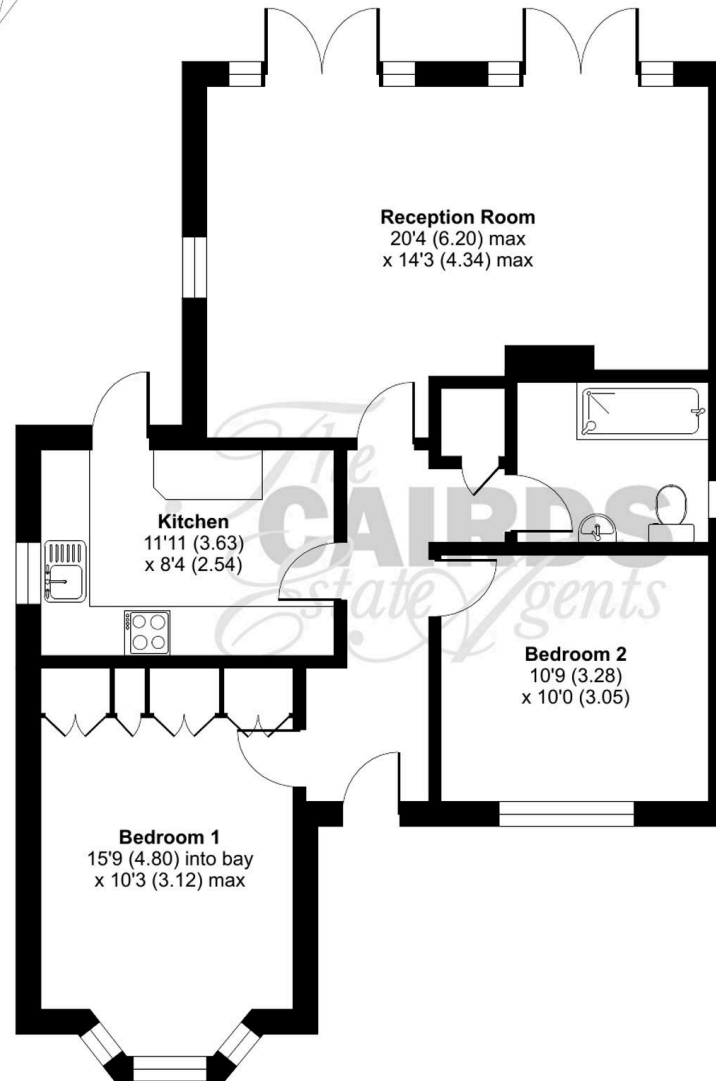
With its convenient location, ample outdoor space, and desirable features, this property presents a rare opportunity for those seeking a harmonious blend of comfort and convenience.

Don't miss the opportunity to call this property your own - call us today to book your viewing.

Woodcote Cottage, Woodcote Road, Epsom, KT18

Approximate Area = 782 sq ft / 72.6 sq m

For identification only - Not to scale



GROUND FLOOR





Cairds The Estate Agents

Cairds The Estate Agents, 128-130 High Street - KT19 8BT

01372 743033 • homes@cairds.co.uk • www.cairds.co.uk