



Rowan Mead, Henbit Close, Tadworth

Guide Price £195,000



Rowan Mead

Henbit Close, Tadworth

Ground floor 1-bed flat in popular retirement development for over 60's. Peaceful living environment with private patio, modern kitchen, shared ownership, on-site manager, and communal facilities. Ideal for downsizers wanting quality living.

Council Tax band: C

Tenure: Leasehold

EPC Energy Efficiency Rating: C

EPC Environmental Impact Rating: D

- Popular Retirement Development
- Ground Floor Flat
- Private Patio Area
- Sitting/Dining Room
- Spacious Kitchen
- Bedroom
- Shower Room
- On-Site Manager
- Resident & Visitor Parking
- 80% Shared Ownership



Nestled within a popular retirement development for the over 60's, this ground floor 1-bedroom flat offers a peaceful and secure living environment fit for a relaxing retirement lifestyle.

The property features a welcoming entrance hall with storage cupboard, a bright sitting/dining room which provides ample space for entertaining guests or unwinding in comfort, with direct access to a private patio area. The spacious kitchen is ideal for culinary enthusiasts, offering modern appliances and plenty of storage options. The well-proportioned bedroom with fitted wardrobes provides a cosy retreat, whilst the modern shower room provides ease and convenience.

The property benefits from a shared ownership of 80%, providing an affordable housing solution for those looking to downsize without compromising on quality. The convenience of an on-site manager, communal laundry facilities, and resident & visitor parking further enhances the ease of living in this well-maintained retirement community.

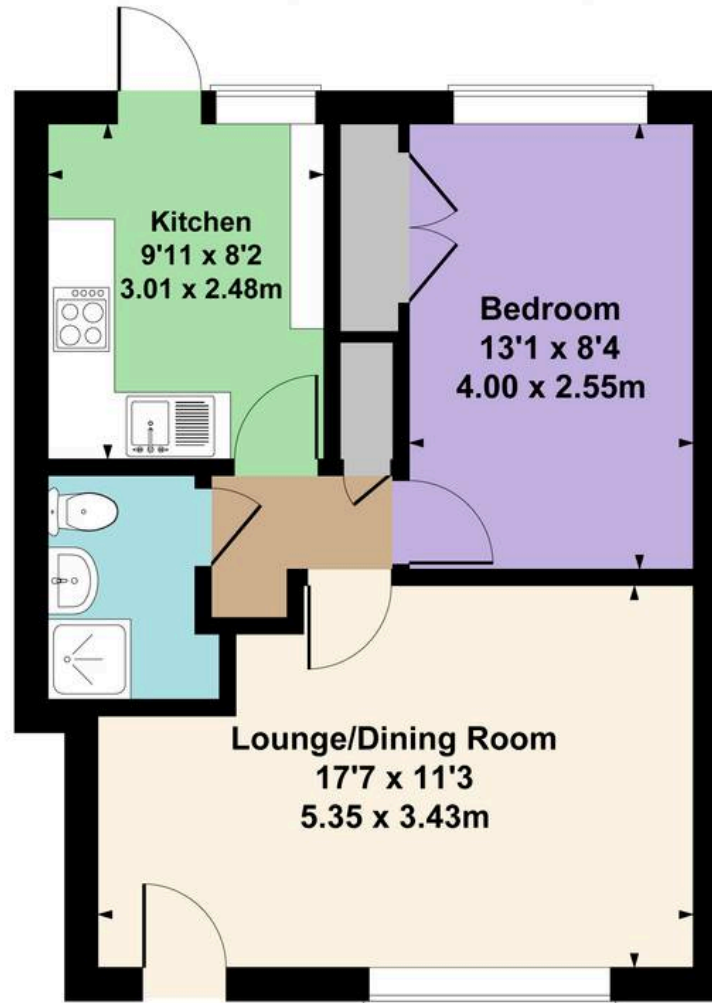
A private patio area offers a tranquil outdoor space where residents can enjoy a morning coffee or bask in the sunshine.

Outside, residents will appreciate the communal gardens and green spaces that surround the property. The private patio area offers the perfect spot where residents can enjoy a morning coffee or relax in the sunshine.

The property's convenient location offers easy access to local amenities, transport links, and nearby attractions, making it an ideal choice for those seeking a tranquil retirement lifestyle with the convenience of urban living. Whether you're looking to relax in the comfort of your own home or socialise with fellow residents, this property offers a perfect balance of privacy, security, and community living in a sought-after retirement setting.

Approximate Gross Internal Area

42.8 sq. m. (461 sq. ft.)



Ground Floor

Floor Area 42.8 sq.m. (461 sq.ft.) approx

Not to scale, for layout reference only. All measurements are approximate.
Produced by As Built Energy Surveys for Cairds Estate Agents.





Cairds The Estate Agents

Cairds The Estate Agents, 128-130 High Street - KT19 8BT

01372 743033 • homes@cairds.co.uk • www.cairds.co.uk