



Ridgeway, Epsom

In Excess of £325,000



Ridgeway

Epsom

Charming 2-bed flat in sought-after West Hill location. Features spacious reception, balcony with green views, modern kitchen & serene communal garden. Easy walk to town centre & station. Book your viewing now!

Council Tax band: C

Tenure: Leasehold

EPC Energy Efficiency Rating: D

EPC Environmental Impact Rating: G

- First Floor Flat
- Popular West Hill Location
- Spacious Balcony With Green Views
- Good Size Reception
- Kitchen
- Two Generous Bedrooms
- Modern Bathroom
- Lovely Communal Garden
- Close To Epsom Common
- Short Walk To Town Centre & Station



Nestled amidst the sought-after West Hill location, this delightful first-floor flat presents a rare opportunity to embrace contemporary living in a charming setting.

Boasting a spacious balcony offering serene green views, this 2-bedroom property is a sanctuary of tranquillity. Step inside to discover a spacious reception area, a well-appointed kitchen with modern fittings, two generously sized bedrooms ideal for restful nights, and a pristine bathroom designed for unwinding after a long day. In addition the property also benefits from a secure personal store, accessed via a metal staircase from the kitchen.

In addition to the private balcony, residents will also have the privilege of enjoying a beautifully maintained communal garden, where lush greenery creates an inviting space for picnics, outdoor gatherings, or simply basking in the sunshine. This outside oasis provides a serene escape from the hustle and bustle of daily life, making it an ideal setting for those seeking a harmonious balance between indoor comfort and outdoor tranquillity.

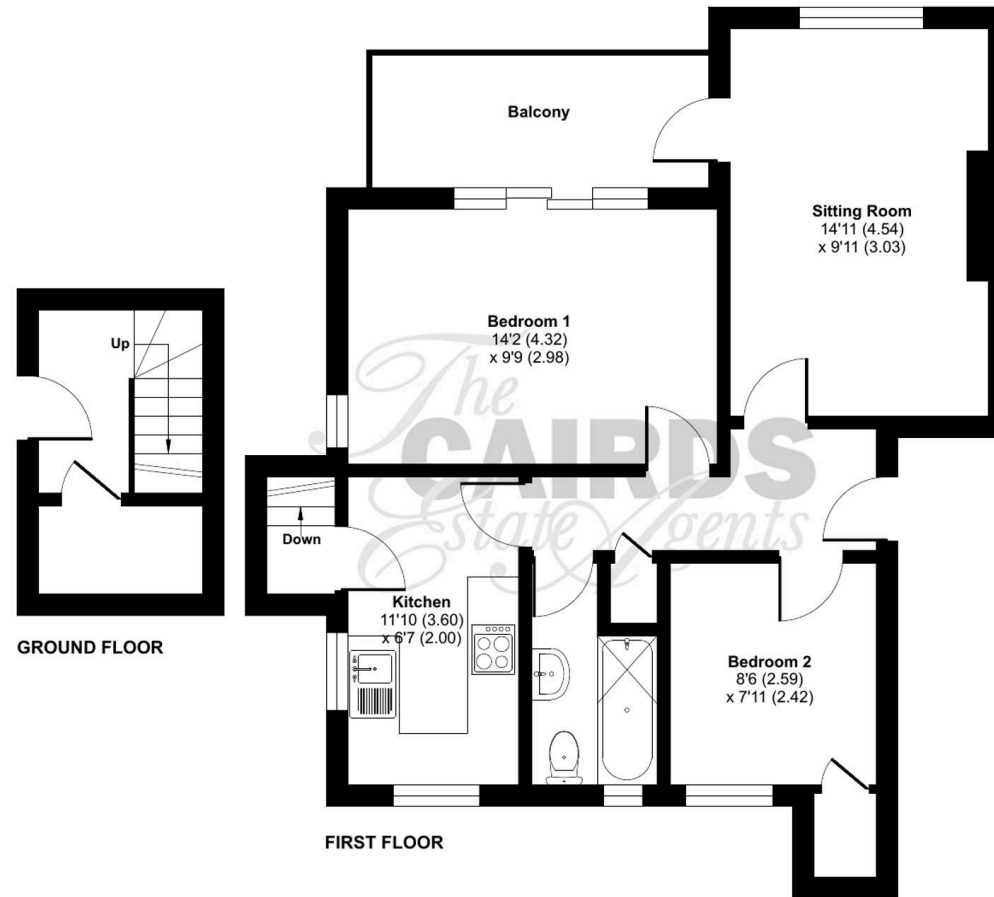
With its proximity to Epsom Common, residents can revel in the beauty of nature while being just a short walk away from the vibrant town centre and station –providing convenience alongside a peaceful residential retreat.

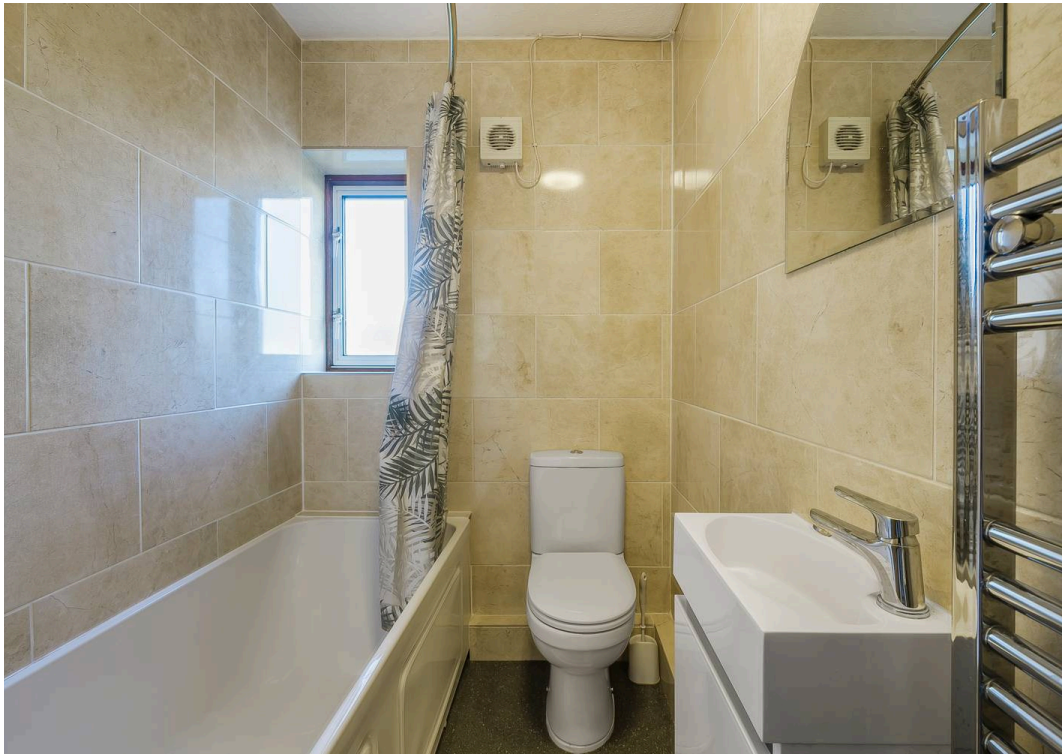
Do not miss out – contact us today to book your viewing appointment!

Ridgeway, Epsom, KT19

Approximate Area = 666 sq ft / 61.8 sq m

For identification only - Not to scale







Cairds The Estate Agents

Cairds The Estate Agents, 128-130 High Street - KT19 8BT

01372 743033 • homes@cairds.co.uk • www.cairds.co.uk