



North View Crescent, Epsom

Guide Price £1,150,000





## North View Crescent

Epsom

Elegantly designed 4-bed detached house with modern living spaces, spacious kitchen/diner/family room onto large terrace, en-suites, utility room, landscaped garden, double garage, and close to amenities and transport links.

Council Tax band: G

Tenure: Freehold

EPC Energy Efficiency Rating: C

EPC Environmental Impact Rating: G

- Beautifully Presented
- Four Bedrooms
- Two En-Suites & Family Bathroom
- Spacious Kitchen/Dining/Family Room
- Utility Room
- Two Reception Rooms
- Large Raised Rear Terrace Overlooking Garden
- Double Garage
- Close To Tattenham Corner Shops & Station
- Easy Reach Of Epsom & Banstead Town Centres



Nestled in a desirable location, this elegantly designed 4-bedroom detached house offers a perfect blend of modern living and timeless charm.

As you step inside, you are greeted by a beautifully presented interior that exudes a sense of luxury and comfort. The ground floor boasts a spacious kitchen/dining/family room, ideal for both casual family meals and entertaining guests with doors leading out to the imposing raised terrace. Additionally, the property features two generous reception rooms, allowing for versatile living spaces to suit all needs. Upstairs, you will find four well-proportioned bedrooms, two of which benefit from en-suites, providing a touch of convenience and privacy, together with the family bathroom. An added bonus is the utility room, ensuring that household chores are a breeze.

Stepping outside, the property continues to impress with its expansive outdoor space. The large raised rear terrace offers a serene retreat where you can unwind and enjoy al fresco dining while overlooking the beautifully landscaped garden. Perfect for hosting summer barbeques or simply relaxing in the sun, this tranquil setting is a true oasis. Completing this wonderful package is a double garage and driveway, providing ample space for parking and storage.

Conveniently situated close to Tattenham Corner shops and station, as well as being within easy reach of Epsom and Banstead town centres, this property offers a desirable lifestyle with a wealth of amenities at your doorstep. Experience the best of both worlds – a peaceful retreat away from the hustle and bustle, yet within easy reach of urban conveniences.

Don't miss the opportunity to make this exquisite property your new dream home.

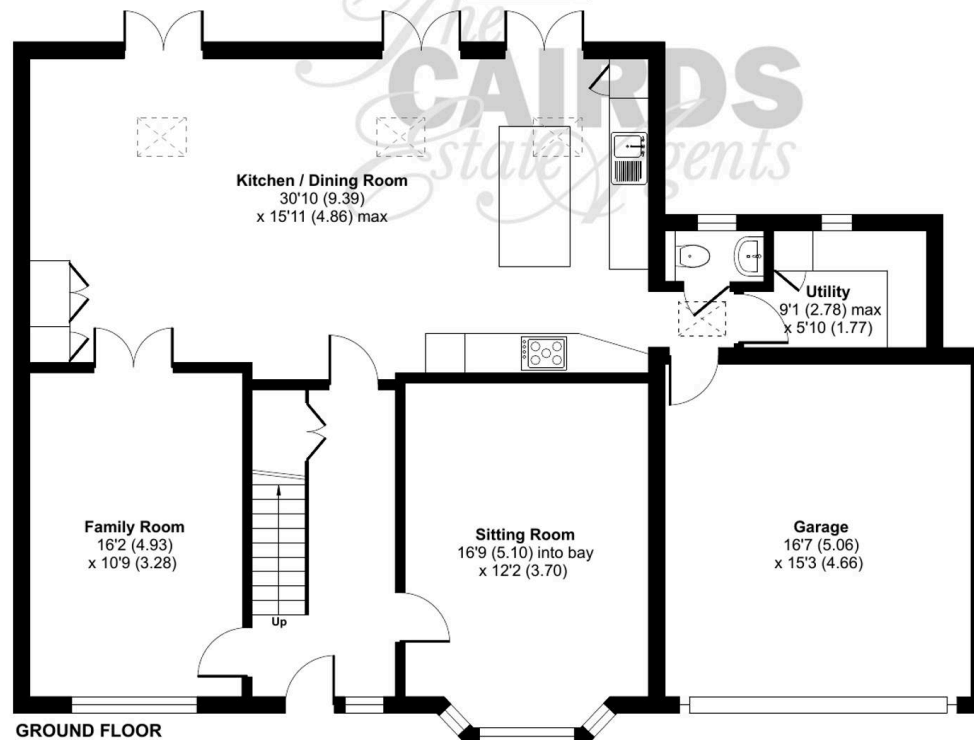
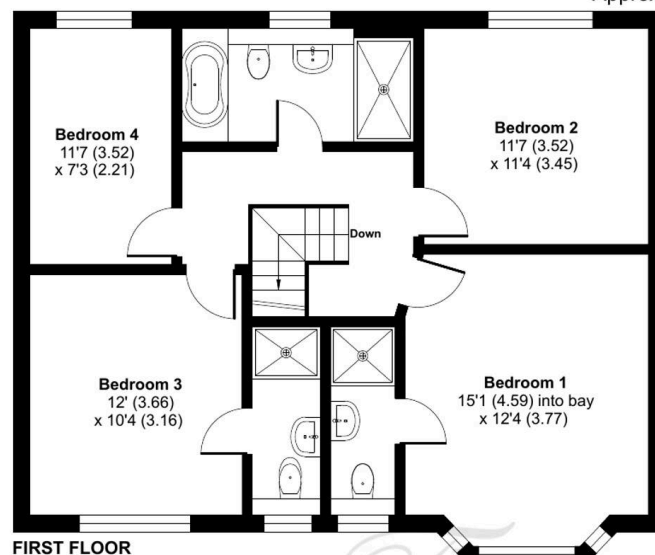
# North View Crescent, Epsom, KT18

Approximate Area = 1835 sq ft / 170.4 sq m

Garage = 254 sq ft / 23.5 sq m

Total = 2089 sq ft / 193.9 sq m

For identification only - Not to scale











## Cairds The Estate Agents

Cairds The Estate Agents, 128-130 High Street - KT19 8BT

01372 743033 • [homes@cairds.co.uk](mailto:homes@cairds.co.uk) • [www.cairds.co.uk](http://www.cairds.co.uk)