



Bloomsbury House, 7 Mill Road

Epsom

Guide Price **£495,000**



Bloomsbury House, 7 Mill Road

Epsom

Modern 3-bed first floor apartment in sought-after location near town centre & station. Features open-plan living with balcony, en-suite to master, parking. Ideal for modern living. Book your viewing today!

Council Tax band: TBD

Tenure: Leasehold

EPC Energy Efficiency Rating: B

EPC Environmental Impact Rating: B

- Modern Apartment
- Built in 2022
- Spacious Open Plan Living With Balcony
- Contemporary Kitchen
- Three Double Bedrooms
- En-Suite Shower Room
- Modern Bathroom
- Allocated Parking
- Close to Town Centre & Station
- Sought After Wallace Fields Catchment



In a sought-after location close to the town centre and station and within the high-demand Wallace Fields catchment, is this first floor 3-bedroom modern apartment built in 2022 offering a unique opportunity to own a contemporary residence in a prime setting.

Boasting a spacious open-plan living area that opens onto a private balcony, this property is designed for modern living and entertaining. The sleek and stylish kitchen features modern appliances and ample storage space, perfect for culinary enthusiasts. The three double bedrooms provide comfortable accommodation, with the master bedroom benefiting from an en-suite shower room for added convenience. A modern bathroom serves the additional bedrooms, completing the living space.

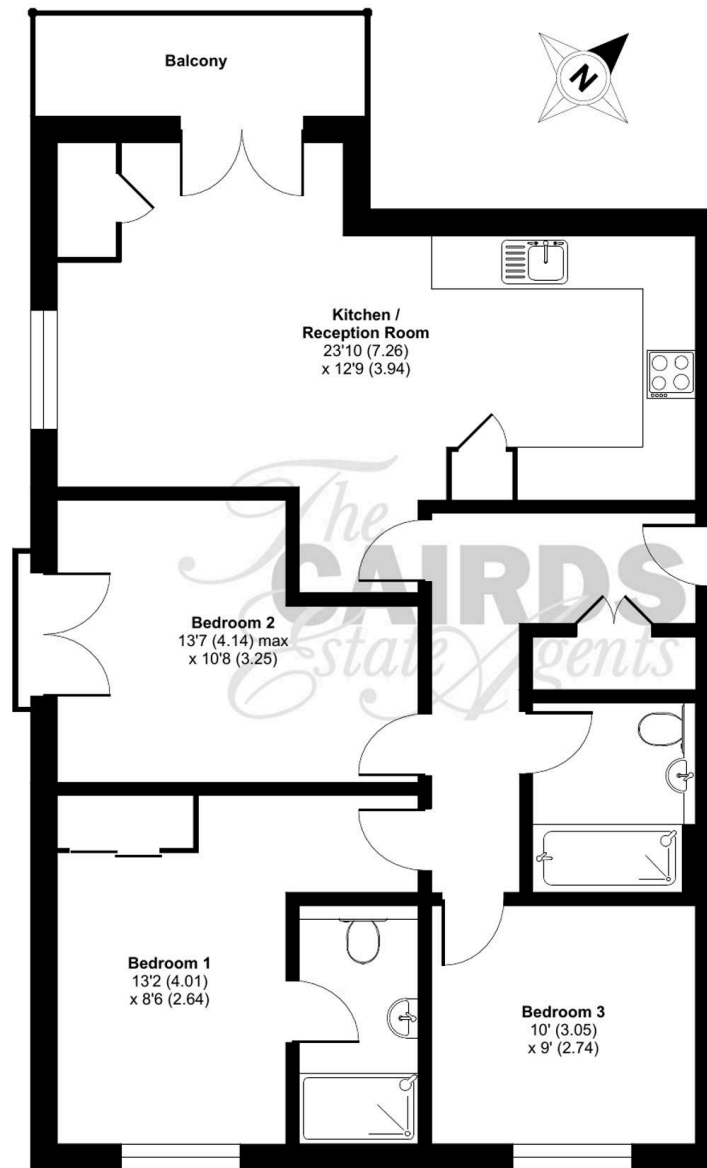
Residents will appreciate the added convenience of allocated parking, ensuring a stress-free arrival back home. The property's prime location, within a short walk to the town centre, station and amenities enhances the appeal for commuters and families alike.

Don't miss this opportunity to own this wonderful contemporary apartment in a highly desirable location. Ring us today to book your appointment!

Mill Road, Epsom, KT17

Approximate Area = 867 sq ft / 80.5 sq m

For identification only - Not to scale



FIRST FLOOR





Cairds The Estate Agents

Cairds The Estate Agents, 128-130 High Street - KT19 8BT

01372 743033 • homes@cairds.co.uk • www.cairds.co.uk