



20 Danetree Road, Epsom
Epsom

In Excess of **£525,000**



20 Danetree Road

Epsom, Epsom

Charming 3-bed semi-detached house in sought-after area. Generous reception rooms, functional kitchen, spacious bedrooms & family bathroom. Large private rear garden. No onward chain. Potential for expansion. Ideal family home with versatile living spaces.

Council Tax band: E

Tenure: Freehold

EPC Energy Efficiency Rating: E

EPC Environmental Impact Rating: E

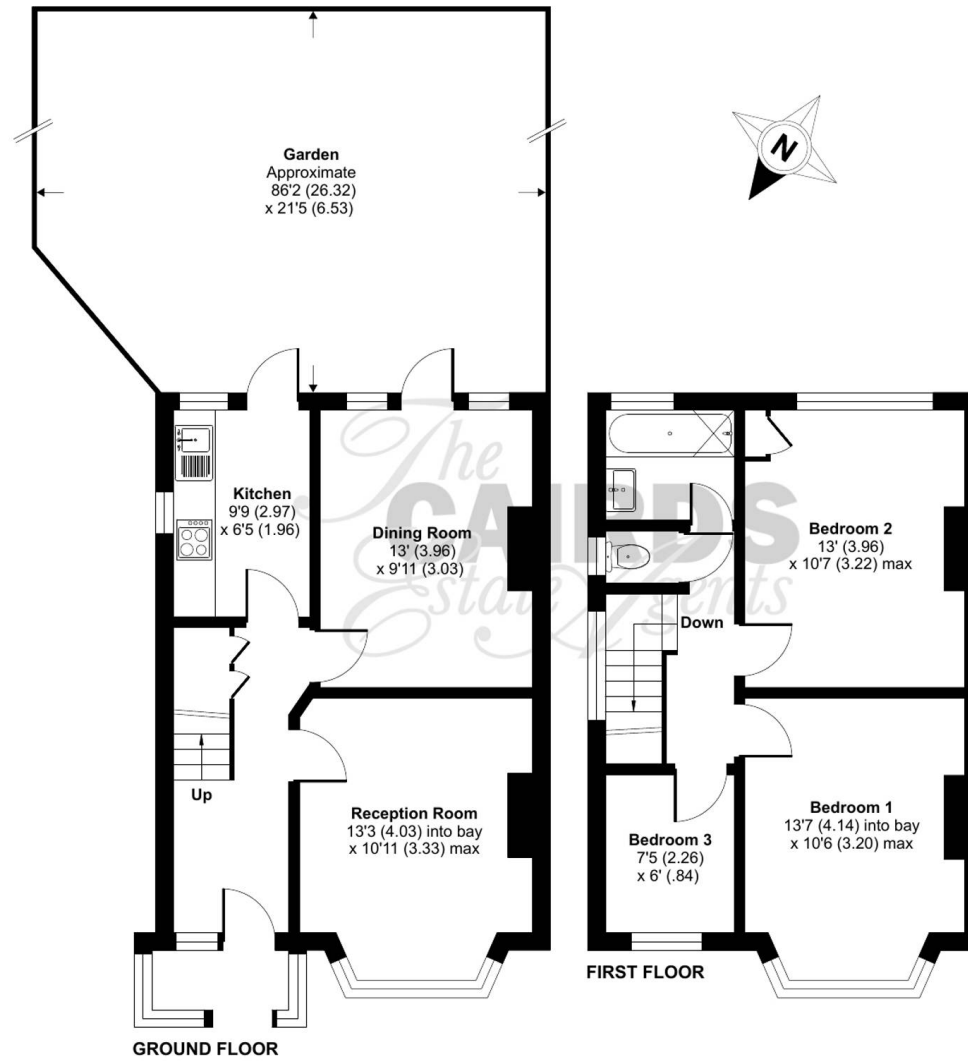
- Three bedroom Semi Detached
- Off Street Parking
- Large Private Rear Garden
- Seperate Kitchen
- Two Reception Rooms
- No Chain



Danetree Road, Epsom, KT19

Approximate Area = 876 sq ft / 81.3 sq m

For identification only - Not to scale







Cairds The Estate Agents

Cairds The Estate Agents, 128-130 High Street - KT19 8BT

01372 743033 • homes@cairds.co.uk • www.cairds.co.uk