



Ashford Court, Glanville Way, Epsom

£425,000



Ashford Court. Glanville Way

Epsom

Ground floor apartment in Noble Park with contemporary design and period charm, high ceilings, 2 bedrooms, 2 bathrooms, and a patio garden. Secluded parkland setting near amenities, with allocated parking. Convenient yet tranquil living near Epsom town centre and station.

Council Tax band: D

Tenure: Leasehold

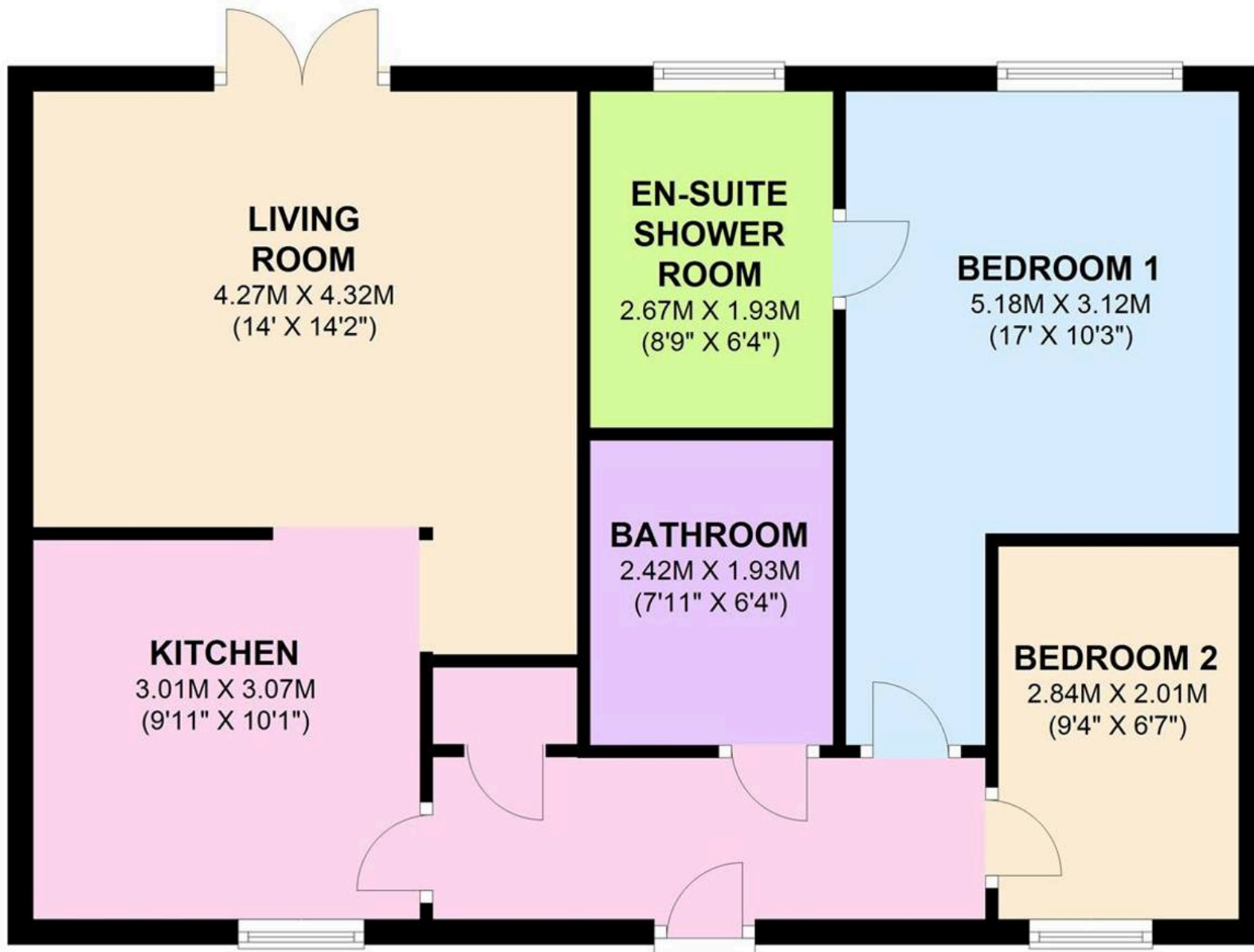
EPC Energy Efficiency Rating: B

- Stunning Ground Floor Apartment
- High Ceilings
- Two Bathrooms
- Secluded Parkland Setting
- Near David Lloyd Leisure Centre
- South West Facing Patio Garden
- Built in Utility/Storage Cupboard Suitable for Washer/Dryer
- Allocated Off Street Parking
- Private Front Door/Entrance



GROUND FLOOR

APPROX. 71.1 SQ. METRES (764.9 SQ. FEET)



TOTAL AREA: APPROX. 71.1 SQ. METRES (764.9 SQ. FEET)





Cairds The Estate Agents

Cairds The Estate Agents, 128-130 High Street - KT19 8BT

01372 743033 • homes@cairds.co.uk • www.cairds.co.uk