



Grosvenor Road, Epsom

Guide Price £485,000



Grosvenor Road

Epsom

Charming 2-bed semi-detached bungalow near Epsom Downs with no chain. Classic interior, two reception rooms, 2 bedrooms, modern bathroom. Secluded garden, garage, driveway. Tranquil location with easy access to amenities and downs. Ideal peaceful retreat in Epsom Downs.

Council Tax band: D

Tenure: Freehold

EPC Energy Efficiency Rating: E

- Semi-Detached Bungalow
- Reception Room
- Dining Room
- Kitchen
- Bathroom
- Secluded Rear Garden
- Garage
- Delightful Epsom Downs Location



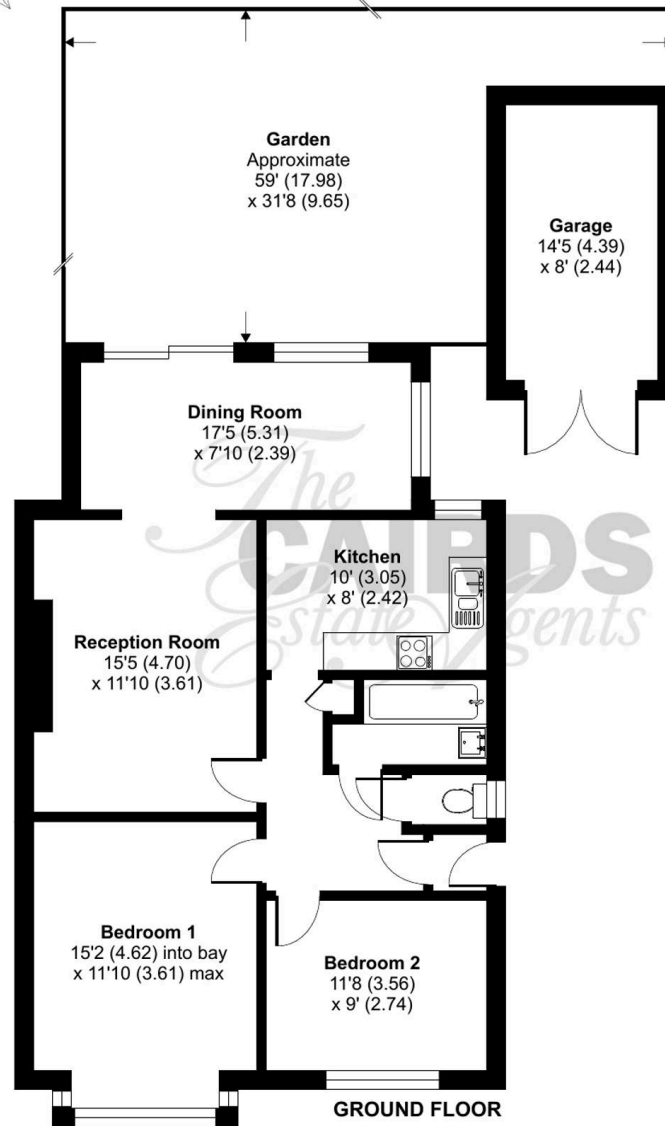
Grosvenor Road, Epsom, KT18

Approximate Area = 861 sq ft / 79.9 sq m

Garage = 117 sq ft / 10.8 sq m

Total = 978 sq ft / 90.8 sq m

For identification only - Not to scale







Cairds The Estate Agents

Cairds The Estate Agents, 128-130 High Street - KT19 8BT

01372 743033 • homes@cairds.co.uk • www.cairds.co.uk