



110 Larkspur Way, Epsom
Epsom

Guide Price **£450,000**



110 Larkspur Way

Epsom, Epsom

Exquisite 4-bed maisonette in sought-after location with modern amenities, elegant design, private garden, garage, and parking. Converted loft offers extra living space. Long lease, convenient to West Ewell Station. Tranquil oasis for families or professionals seeking comfort and convenience.

Council Tax band: C

Tenure: Leasehold

EPC Energy Efficiency Rating: E

EPC Environmental Impact Rating: E

- Four Bedroom Maisonette
- First Floor
- Private Garden
- Garage
- Parking
- Long Lease
- 2.2 Miles From West Ewell Station



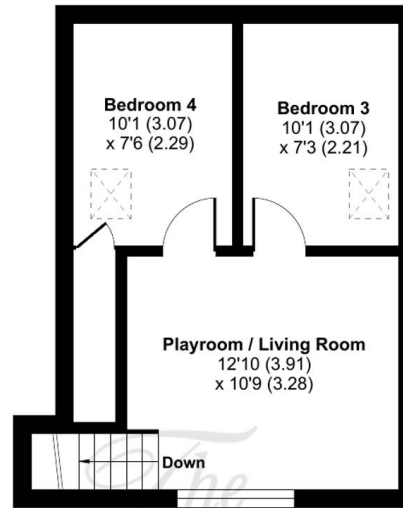
Larkspur Way, Epsom, KT19

Approximate Area = 1064 sq ft / 98.8 sq m

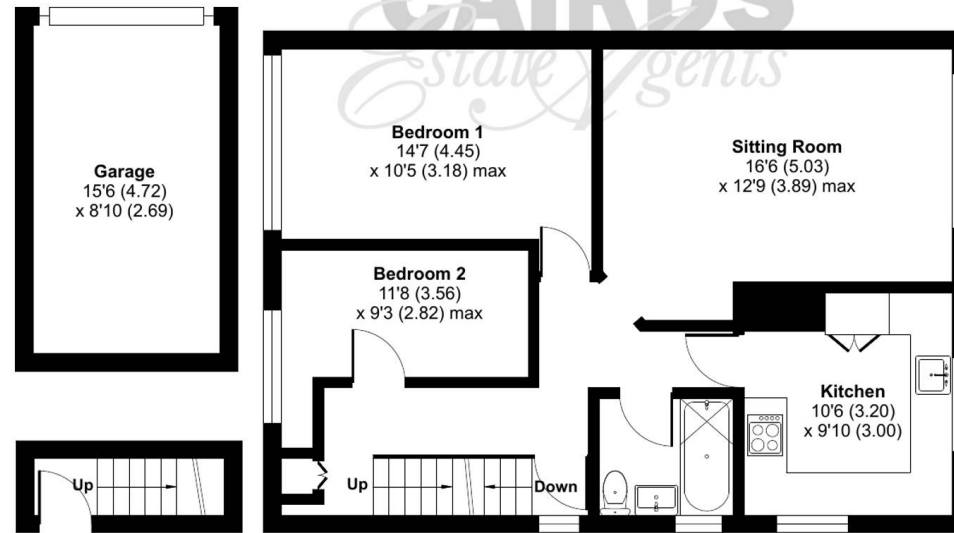
Garage = 137 sq ft / 12.7 sq m

Total = 1201 sq ft / 111.5 sq m

For identification only - Not to scale



SECOND FLOOR



GROUND FLOOR

FIRST FLOOR







Cairds The Estate Agents

Cairds The Estate Agents, 128-130 High Street - KT19 8BT

01372 743033 • homes@cairds.co.uk • www.cairds.co.uk