



**Flat 35, Rowan Mead Henbit Close, Tadworth**

Tadworth

Guide Price **£235,000**





## Flat 35

Rowan Mead Henbit Close, Tadworth

Ground floor flat in vibrant retirement community offers tranquil living with no chain. Includes large reception room, 2 beds, updated kitchen, patio, communal garden, storage, laundry, parking, on-site manager, social events, and nearby leisure centre. Contact Cairds for a viewing.

Council Tax band: C

Tenure: Leasehold

EPC Energy Efficiency Rating: E

EPC Environmental Impact Rating:

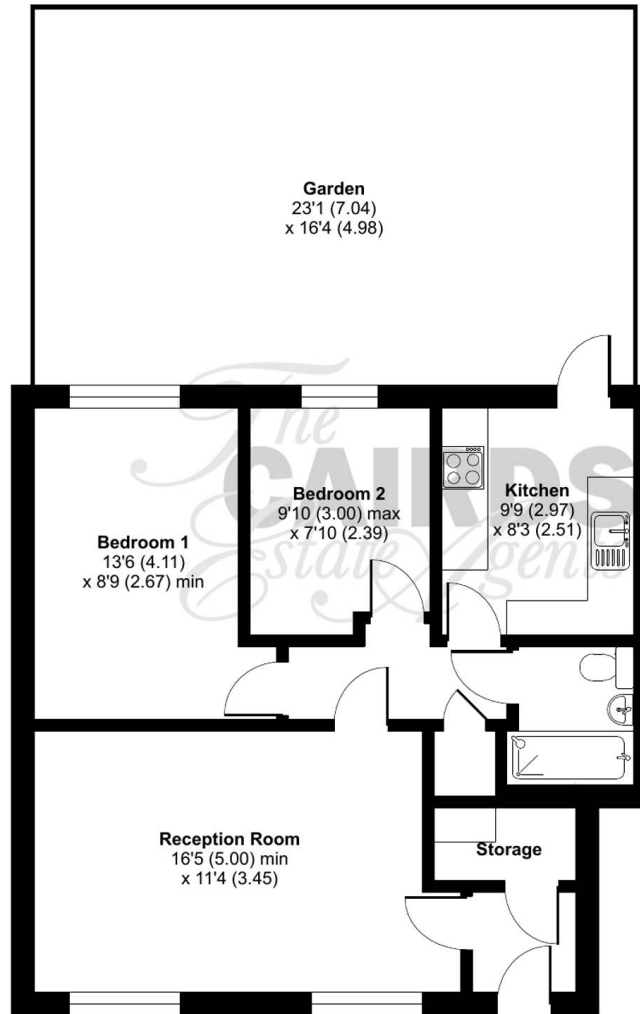
- Ground Floor Flat
- Retirement Property
- Two Bedrooms
- Modernised with Updated Kitchen
- Access to Patio & Rear Communal Garden
- On Site Manager
- No Onward Chain
- Walk to Tadworth Pool, Gym & Allotments
- Popular & Thriving Retirement Community



# Rowan Mead, Henbit Close, Tadworth, KT20

Approximate Area = 636 sq ft / 59.1 sq m

For identification only - Not to scale



GROUND FLOOR



Floor plan produced in accordance with RICS Property Measurement Standards incorporating International Property Measurement Standards (IPMS2 Residential). ©nlcheom 2024. Produced for Cairds. REF: 1161288



