



69 Ashurst Road, Tadworth
Tadworth

Guide Price **£550,000**



69 Ashurst Road

Tadworth, Tadworth

Charming 2/3 bed end terrace in sought-after location. Bright living room, combined kitchen/dining room, potential 3rd bed/study on ground floor, landscaped garden, potential loft extension. Off-street parking, close to shops, schools, and transport links. Contact Cairds to view.

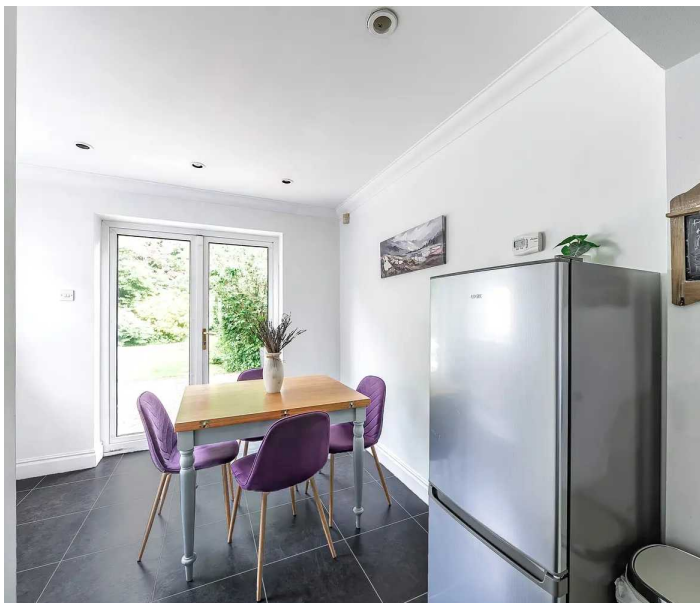
Council Tax band: D

Tenure: Freehold

EPC Energy Efficiency Rating: D

EPC Environmental Impact Rating: E

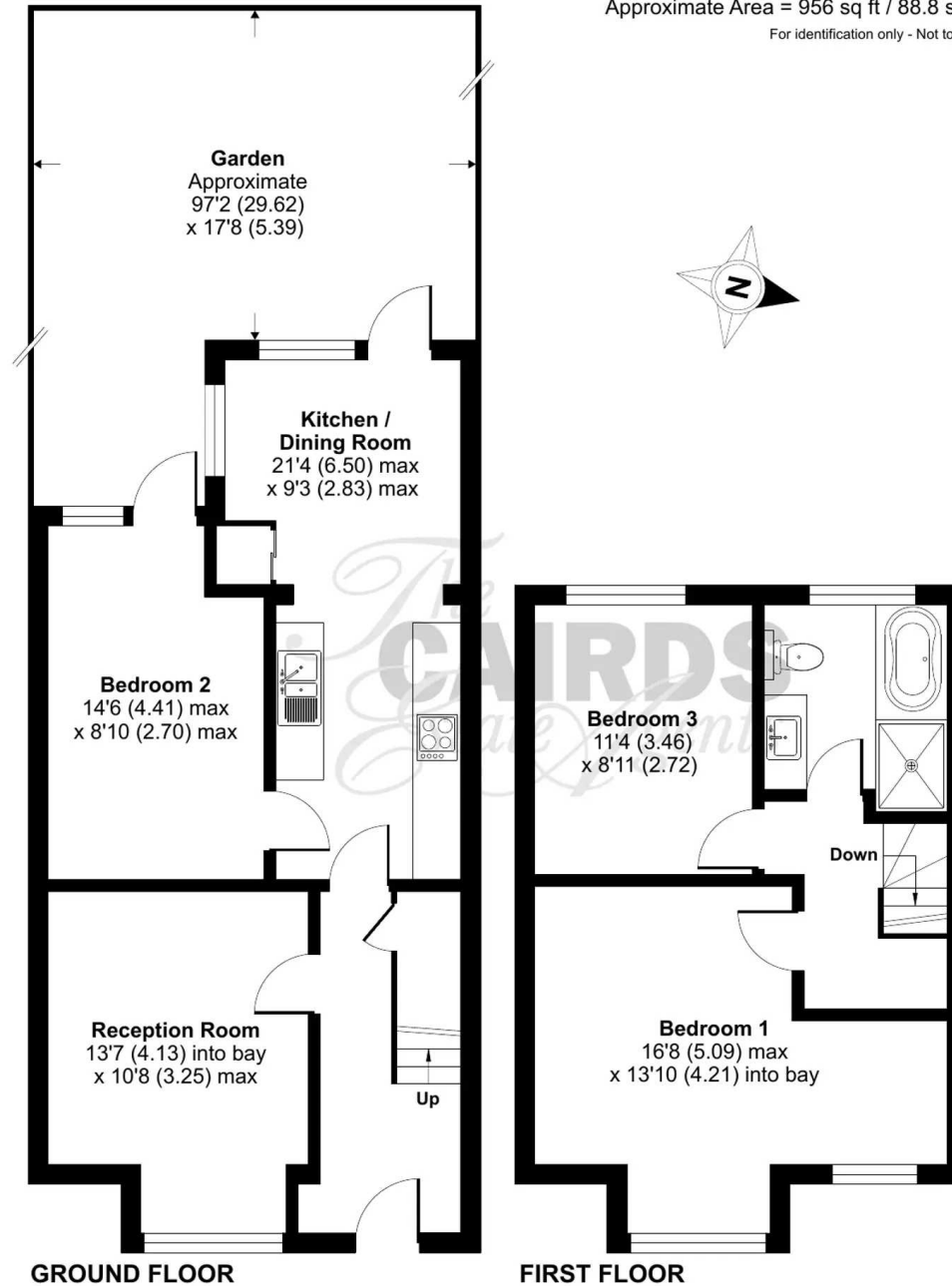
- Two / Three Bed Semi Detached
- Principal Bedroom w/ Fitted Wardrobes & Dressing Area
- Double 2nd bedroom
- Third Bedroom w/ Garden Access
- Combined Kitchen Dining Room
- Potential To Extend Into Loft (STPP)
- Off Street Parking
- Attractive Rear Garden, Patio & Shed
- Close to Shops, Bus Routes, Train Station & Schools



Ashurst Road, Tadworth, KT20

Approximate Area = 956 sq ft / 88.8 sq m

For identification only - Not to scale



Floor plan produced in accordance with RICS Property Measurement Standards incorporating International Property Measurement Standards (IPMS2 Residential). © nlcheom 2024. Produced for Cairds - REF: 1134525





Cairds The Estate Agents

Cairds The Estate Agents, 128-130 High Street - KT19 8BT

01372 743033 • homes@cairds.co.uk • www.cairds.co.uk