



**26 Briavels Court Downs Hill Road, Epsom**  
Epsom

Guide Price **£329,000**





## 26 Briavels Court Downs Hill Road

Epsom, Epsom

Charming ground floor apartment in Epsom Town Centre with 2 double bedrooms, convenient amenities, single garage, and front gardens. Ideal for families and professionals seeking a serene urban retreat. Updates needed but great potential. No onward chain. Council Tax band: C

Tenure: Leasehold

EPC Energy Efficiency Rating: D

EPC Environmental Impact Rating:

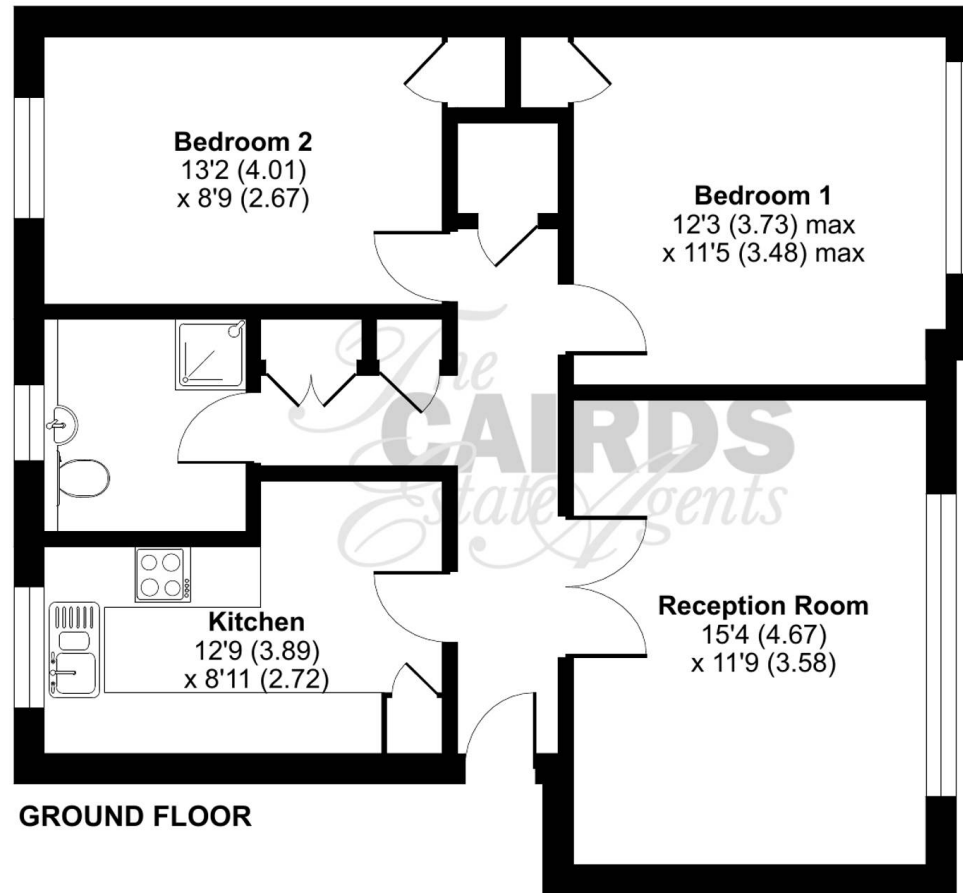
- Ground Floor Apartment
- No Chain
- Two Double Bedrooms
- One Bathroom with Standing Shower
- Single Garage
- Gardens Front of Block
- Some updates Required
- Close to Schools
- Epsom Town Centre Borders



# Downs Hill Road, Epsom, KT18

Approximate Area = 738 sq ft / 68.5 sq

For identification only - Not to scale











## Cairds The Estate Agents

Cairds The Estate Agents, 128-130 High Street - KT19 8BT

01372 743033 • [homes@cairds.co.uk](mailto:homes@cairds.co.uk) • [www.cairds.co.uk](http://www.cairds.co.uk)