



23 The Greenway, Epsom
Epsom

Guide Price **£525,000**



23 The Greenway

Epsom, Epsom

Exciting semi-detached family home in Wells Estate, offers potential for personalisation and extension. 2 reception rooms, large outdoor dining area, spacious rear garden. 3 bedrooms, family bathroom. Convenient location near Epsom Common, schools, and amenities. Contact Cairds today!

Council Tax band: E

Tenure: Freehold

EPC Energy Efficiency Rating: E

EPC Environmental Impact Rating: F

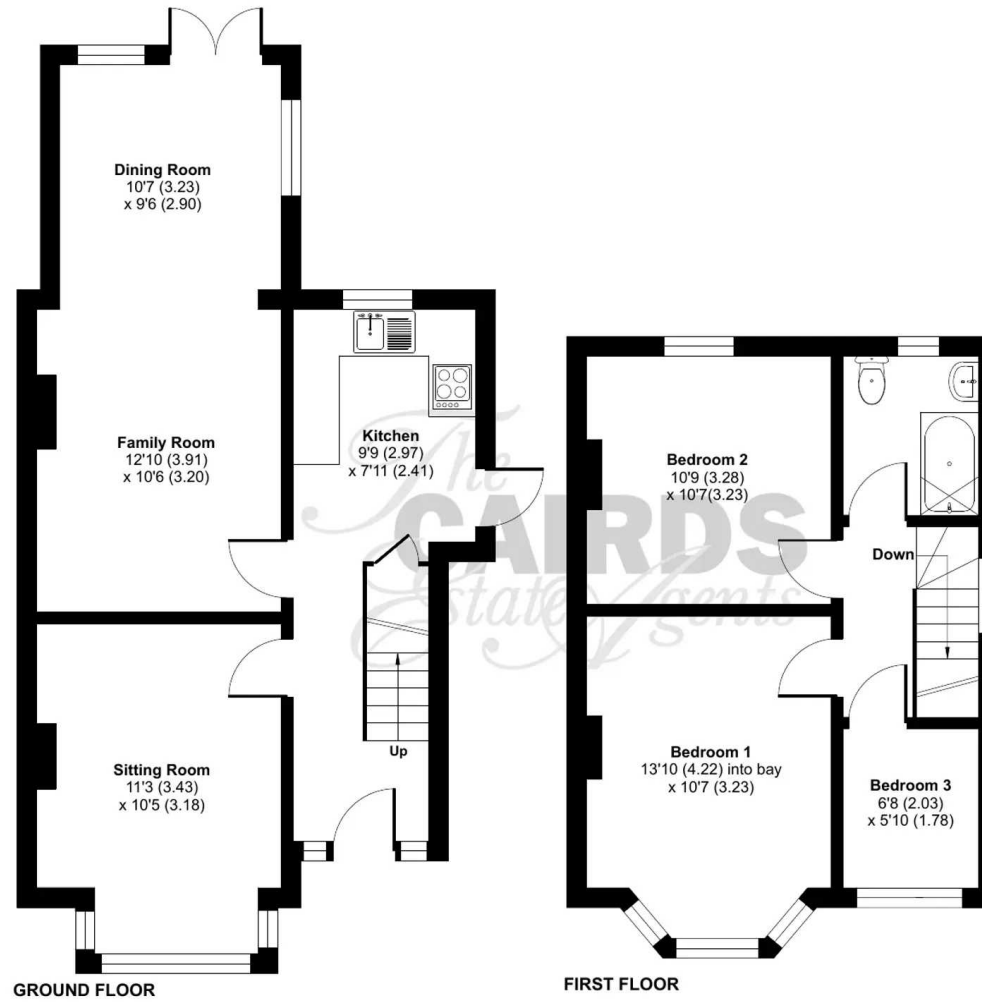
- Family Semi-Detached Home
- Three Bedrooms
- Needs Updates, Scope To Extend STPP
- Two Reception Rooms, small rear extension
- Popular Family Neighbourhood
- Wells Estate
- Off Street Parking
- Large Rear Garden, Patio, Sheds



The Greenway, Epsom, KT18

Approximate Area = 942 sq ft / 87.5 sq

For identification only - Not to scale







Cairds The Estate Agents

Cairds The Estate Agents, 128-130 High Street - KT19 8BT

01372 743033 • homes@cairds.co.uk • www.cairds.co.uk