



35 Richmond Crescent, Epsom
Epsom

Guide Price **£900,000**



35 Richmond Crescent

Epsom, Epsom

Stunning 4-bed detached house in sought-after Noble Park. Spacious layout with modern kitchen/diner, 4 double bedrooms, garage, and private garden. Ideal for families, close to Epsom Common. Outdoor space perfect for al fresco dining. Ample parking. Comfortable and stylish family home in prime location.

Council Tax band: G

Tenure: Freehold

EPC Energy Efficiency Rating: C

EPC Environmental Impact Rating:

- Detached House
- Attached Garage
- Modern Kitchen/Diner
- Noble Park
- Close to Epsom Common
- Downstairs WC
- Private Rear Garden
- Four Bedrooms



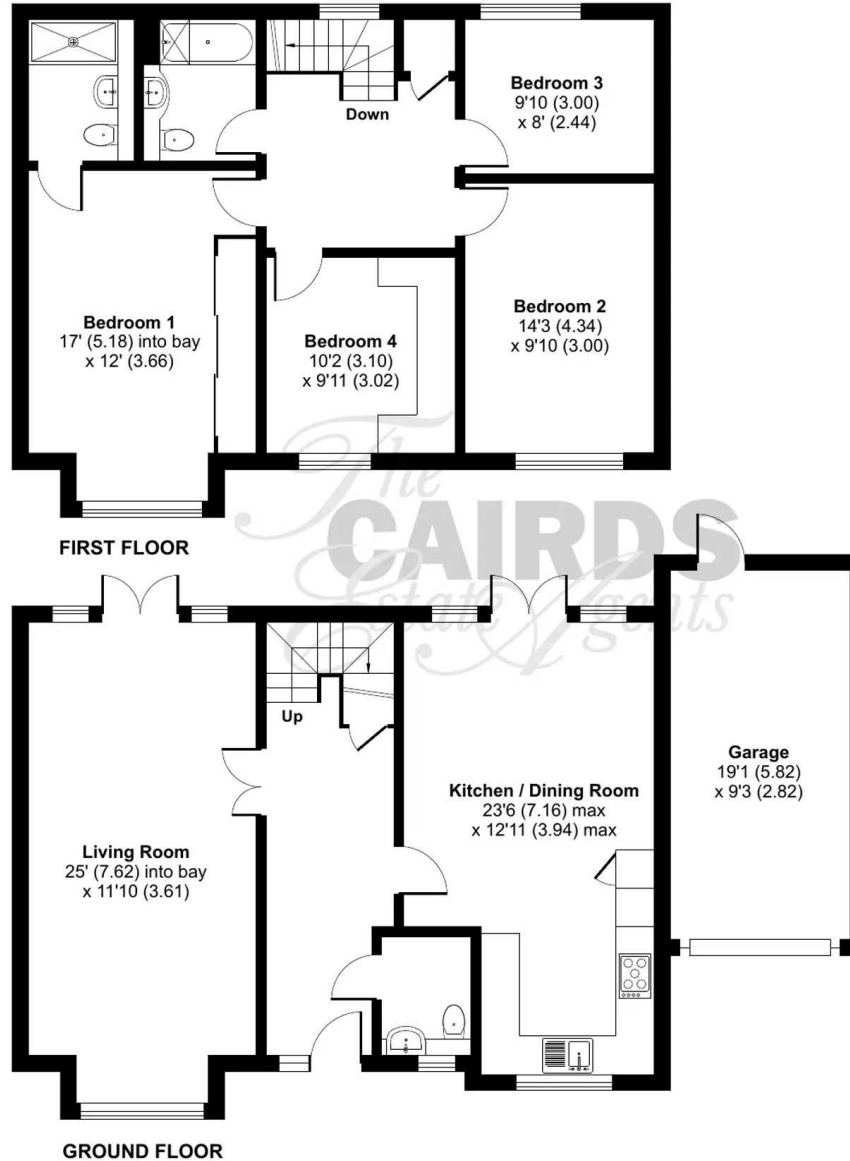
Richmond Crescent, Epsom, KT19

Approximate Area = 1505 sq ft / 139.8 sq m

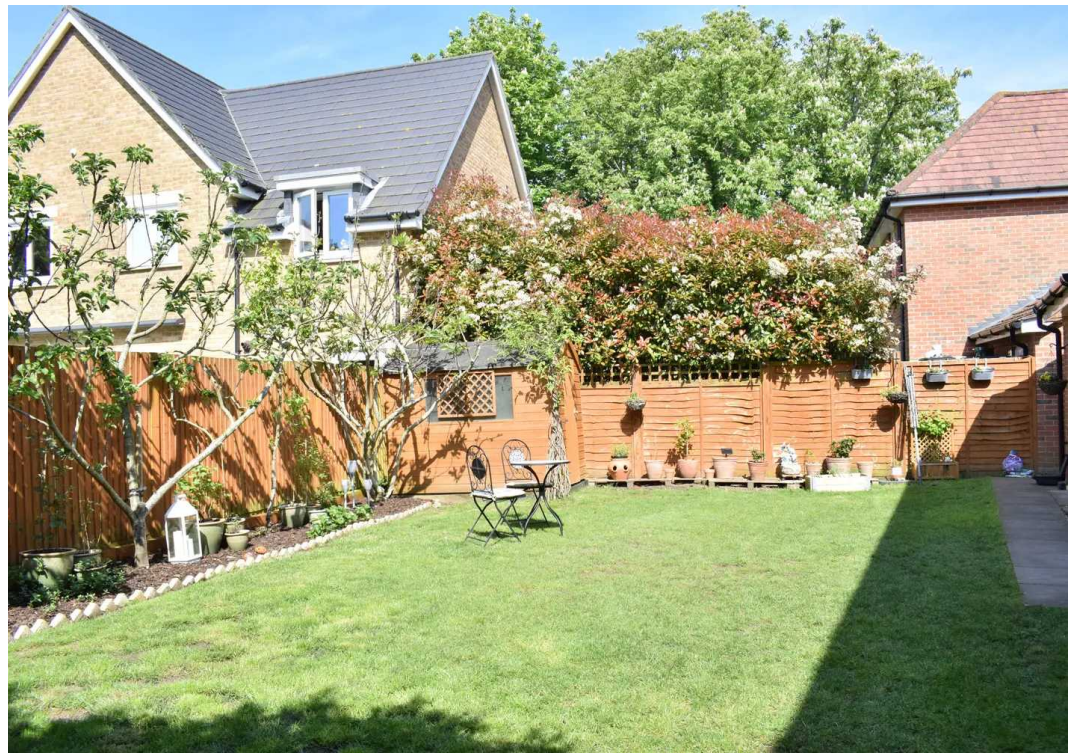
Garage = 179 sq ft / 16.6 sq m

Total = 1684 sq ft / 156.4 sq m

For identification only - Not to scale



Floor plan produced in accordance with RICS Property Measurement Standards incorporating International Property Measurement Standards (IPMS2 Residential). ©nlcheom 2024. Produced for Cairds. REF: 1110456





Cairds The Estate Agents

Cairds The Estate Agents, 128-130 High Street - KT19 8BT

01372 743033 • homes@cairds.co.uk • www.cairds.co.uk