



4 Beech Road, Epsom

Guide Price **£550,000**

4 Beech Road

Epsom, Epsom

Charming 3-bed mid-terrace with character features and modern updates. Inviting living room, stylish kitchen, sunny courtyard garden. Three double bedrooms, ensuite, family bath. Off-street parking. Popular location near town centre, Epsom Downs, and popular primary school. Call to view! Council Tax band: D

Tenure: Freehold

EPC Energy Efficiency Rating: D

EPC Environmental Impact Rating: D

- Renovated Character Property
- Three Double Bedrooms
- Stunning Kitchen/Dining
- Living Room With Fireplace
- Contemporary Bathroom
- Private Rear Courtyard Garden
- Popular Cul-de-sac
- Driveway With Carport
- Convenient to Town & Downs





4 Beech Road

Epsom, Epsom

Charming 3-bed mid-terrace with character features and modern updates. Inviting living room, stylish kitchen, sunny courtyard garden. Three double bedrooms, ensuite, family bath. Off-street parking. Popular location near town centre, Epsom Downs, and popular primary school. Call to view!
Council Tax band: D

Tenure: Freehold

EPC Energy Efficiency Rating: D

EPC Environmental Impact Rating: D

- Renovated Character Property
- Three Double Bedrooms
- Stunning Kitchen/Dining
- Living Room With Fireplace
- Contemporary Bathroom
- Private Rear Courtyard Garden
- Popular Cul-de-sac
- Driveway With Carport
- Convenient to Town & Downs

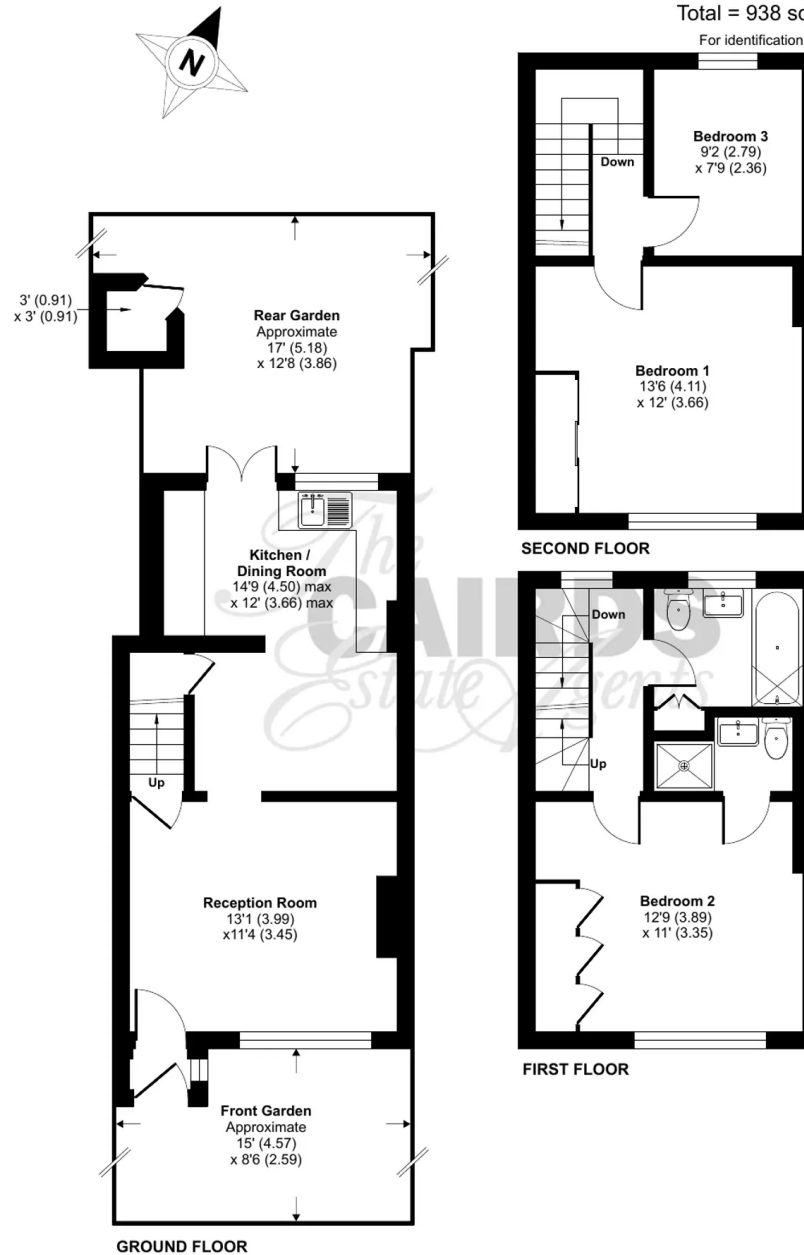
Beech Road, Epsom, KT17

Approximate Area = 930 sq ft / 86.3 sq m

Outbuilding = 8 sq ft / 0.7 sq m

Total = 938 sq ft / 87 sq m

For identification only - Not to scale



Floor plan produced in accordance with RICS Property Measurement Standards incorporating International Property Measurement Standards (IPMS2 Residential). ©nlcheom 2024. Produced for Cairds - REF: 1106797



Cairds The Estate Agents

Cairds The Estate Agents, 128-130 High Street - KT19 8BT

01372 743033

homes@cairds.co.uk

www.cairds.co.uk