



61 Great Tattenhams, Epsom
Epsom

Guide Price **£899,995**



61 Great Tattenhams

Epsom, Epsom

Impressive 5-bed detached bungalow with loft extension, offering 2300 sq ft living space. Features spacious rooms, modern kitchen, garden room, off-street parking. Close to amenities, Shawley Primary School, Epsom Downs Racecourse. Perfect for families. Council Tax band: F

Tenure: Freehold

EPC Energy Efficiency Rating: D

EPC Environmental Impact Rating:

- Approximately 2300 Sq Ft
- Four/Five Large Bedrooms
- Two Stunning Bathrooms
- Kitchen/Dining Room
- Detached Utility Room
- Detached Garden Room
- Parking for Four Cars
- Lovely Landscaped Garden & Patio
- Epsom Downs
- Five Mins Walk to Shawley Primary School



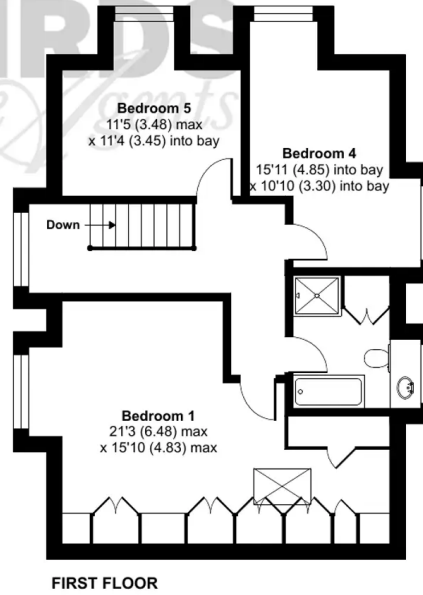
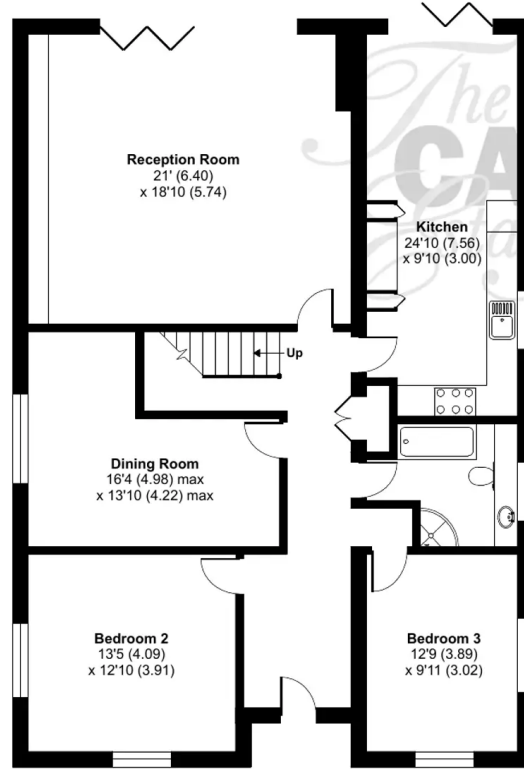
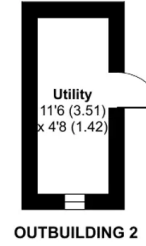
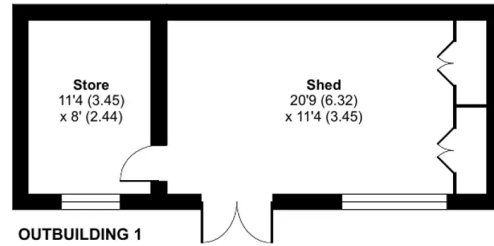
Great Tattenhams, Epsom, KT18

Approximate Area = 2179 sq ft / 202.4 sq m

Outbuildings = 391 sq ft / 36.3 sq m

Total = 2570 sq ft / 238.7 sq m

For identification only - Not to scale







Cairds The Estate Agents

Cairds The Estate Agents, 128-130 High Street - KT19 8BT

01372 743033 • homes@cairds.co.uk • www.cairds.co.uk