



131 Manor Green Road, Epsom
Epsom

Guide Price **£1,200,000**



131 Manor Green Road

Epsom, Epsom

Impressive 5-bed detached house on sought-after road. Spacious with 3 reception rooms, renovated kitchen, large garden, garage with workshop. Close to schools, train station, amenities. Ideal family home with ample space and convenience.

Council Tax band: G

Tenure: Freehold

EPC Energy Efficiency Rating: D

EPC Environmental Impact Rating:

- Five Bedroom Detached
- Nearly 2000 SqFt
- Superb Position on Sought After Road
- Wonderful Family Home
- Large Garden & Patio
- Garage & Off Street Parking
- Walk To Schools, Station, Shops, Common
- Two Reception Rooms
- Renovated Kitchen and Bathrooms



Manor Green Road, Epsom, KT19



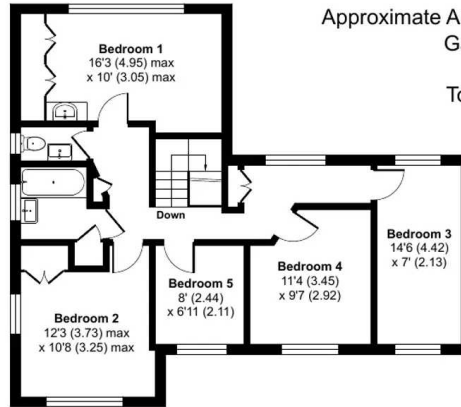
Approximate Area = 1651 sq ft / 153.3 sq m

Garage = 282 sq ft / 26.1 sq m

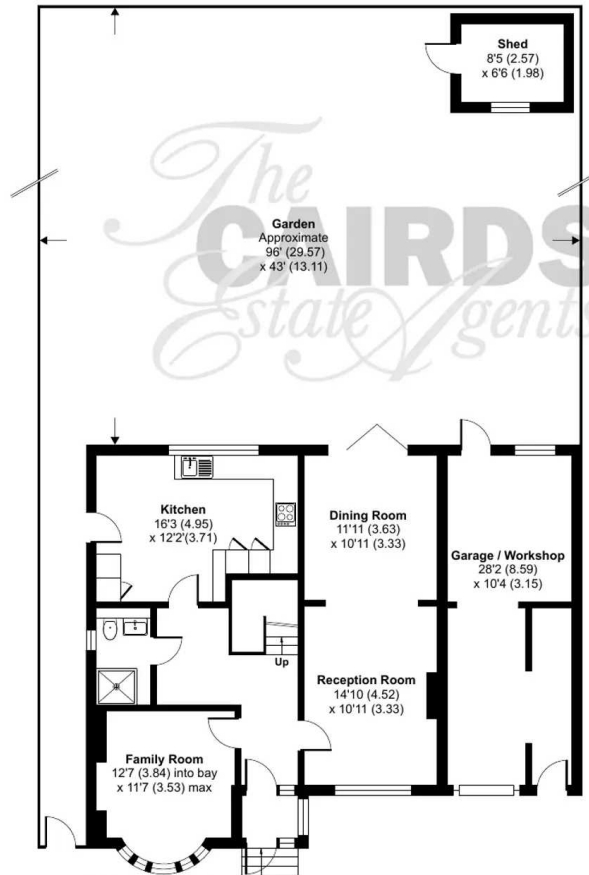
Shed = 55 sq ft / 5.1 sq m

Total = 1988 sq ft / 184.5 sq m

For identification only - Not to scale



FIRST FLOOR



GROUND FLOOR



Floor plan produced in accordance with RICS Property Measurement Standards incorporating International Property Measurement Standards (IPMS2 Residential). ©nlcheom 2024. Produced for Cairds - REF: 1082312





Cairds The Estate Agents

Cairds The Estate Agents, 128-130 High Street - KT19 8BT

01372 743033 • homes@cairds.co.uk • www.cairds.co.uk