



4 Albertine Close, Epsom
Epsom

Guide Price **£1,220,000**



4 Albertine Close

Epsom, Epsom

Spacious detached family residence near Epsom Downs in a sought-after cul-de-sac. Adaptable layout, abundant natural light, contemporary living spaces. Impressive facade, ample parking. 5 double bedrooms, luxurious principal suite, 3 bathrooms. Rear garden with entertaining area. Close to amenities.

Council Tax band: G

Tenure: Freehold

EPC Energy Efficiency Rating: C

EPC Environmental Impact Rating: D

- Five Bedroom Detached House
- No Onward Chain
- Three Reception Rooms
- Three Bathrooms Plus WC
- 2435 Square Feet in Size
- Large Private Landscaped Garden
- Stunning Modern Kitchen
- Separate Office/Play Room



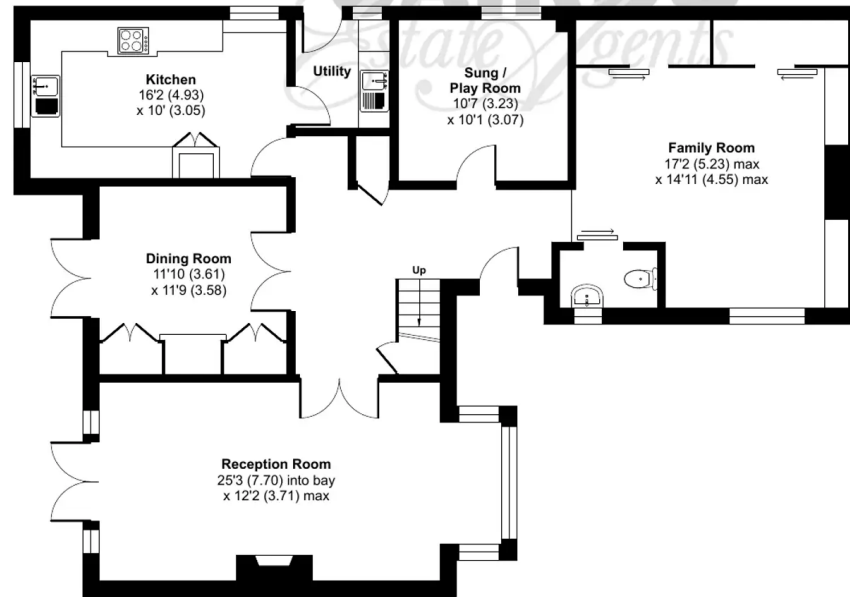
Albertine Close, Epsom, KT17

Approximate Area = 2435 sq ft / 226.2 sq m

For identification only - Not to scale



FIRST FLOOR



GROUND FLOOR







Cairds The Estate Agents

Cairds The Estate Agents, 128-130 High Street - KT19 8BT

01372 743033 • homes@cairds.co.uk • www.cairds.co.uk