

Emma's



200-202 High Street Sutton

, Sutton, SM1 1NR

£1,100 Per Calendar Month



Light and well-proportioned one bedroom flat located on High Street Sutton and decorated in neutral modern decor. A short walk from Sutton Station the flat boasts excellent transport links and local amenities.



Beautiful, light and well-proportioned one bedroom, flat located just off High Street Sutton.

The flat has one double bedroom and is decorated throughout in neutral modern decor with open-plan kitchen/ living room, and one bathroom.

The flat is unfurnished with basic, neutral decor of laminate floors and white walls throughout.

The west-facing living room/kitchen looks out over High Street Sutton whilst the bedroom at the rear faces on to the quiet Elm Grove.

The entrance to the flat is also via Elm Grove providing the flat with a quiet and private entrance away from High Street Sutton.

Living room kitchen 187 (57.00m)

The open plan living room kitchen is South-facing and looks out over the High Street.

Bedroom 121 (36.88m)

The flat's spacious double bedroom faces the side of the building, sheltering it from some of the noise of the High Street, and is decorated in neutral tones with a built in wardrobe.

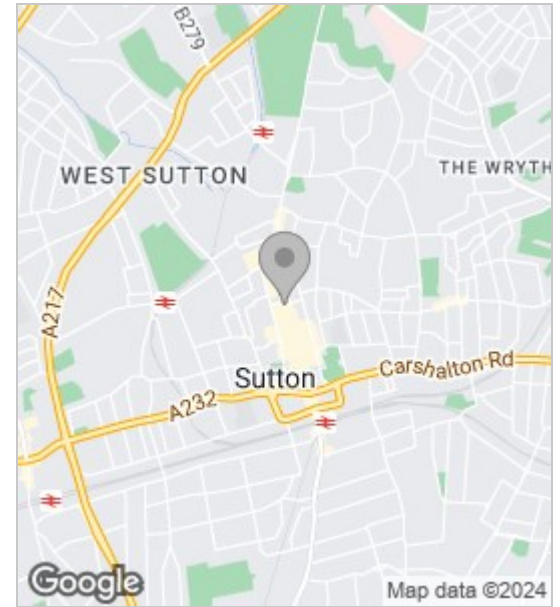
Bathroom

The bathroom is decorated in white and has a combination bath-shower.

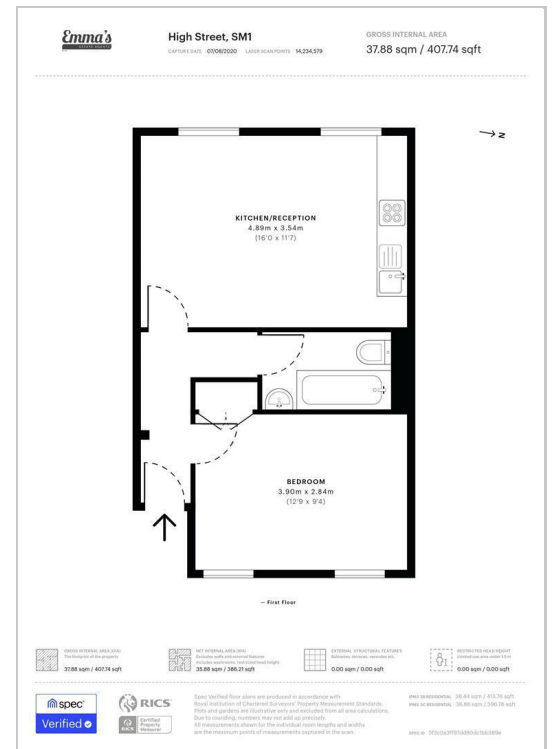
A short walk from Sutton Station the flat boasts excellent transport links in to London and is surrounded by a vibrant neighbourhood with local amenities.

Please note that there are no parking provisions at this property and residents are not eligible for residential parking permits through the local council.

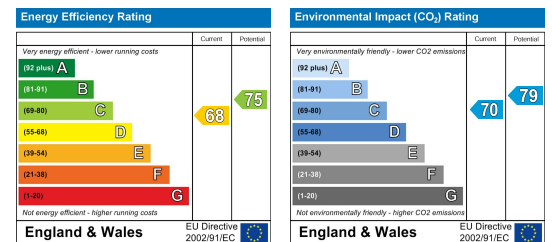
Area Map



Floor Plans



Energy Efficiency Graph



These particulars, whilst believed to be accurate are set out as a general outline only for guidance and do not constitute any part of an offer or contract. Intending purchasers should not rely on them as statements of representation of fact, but must satisfy themselves by inspection or otherwise as to their accuracy. No person in this firm's employment has the authority to make or give any representation or warranty in respect of the property.

68 Streatham Hill, London, SW2 4RD

Tel: 0208 677 6608 ~ Email: mail@emmasestateagents.co.uk

VAT No: 248 9798 28 ~ Company Registered in England and Wales No. 10219095

