

Emma's



2a Heath Road

, Twickenham, TW1 4BZ

£1,350 Per Calendar Month



One double bedroom, furnished, second floor flat located on Heath Road, bills included. Decorated with modern neutral décor, fixtures and fittings. A short walk from Twickenham Station the flat boasts beautiful surroundings and excellent local amenities.



One double bedroom, furnished, second floor flat located on Heath Road, just moments from the beautiful riverside.

Bills are included in the listed price: council tax, water, electricity, broadband. The flat is electric throughout and has no gas.

The flat is decorated throughout with white walls, high quality wood-laminate floors and neutral modern décor, fixtures and fittings. The flat features an open-plan kitchen/ living room, separate bathroom and bedroom.

Living room kitchen 198 (60.35m)

The living room kitchen is bright and well-proportioned and looks out over Heath Road.

Bedroom 88 (26.82m)

The bedroom, which also looks out over Heath Road has large Southerly facing windows.

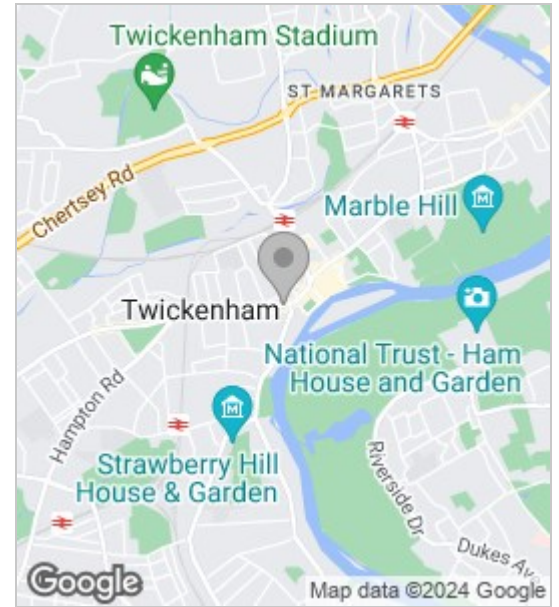
Bathroom

The compact bathroom has a shower and is decorated in neutral tones.

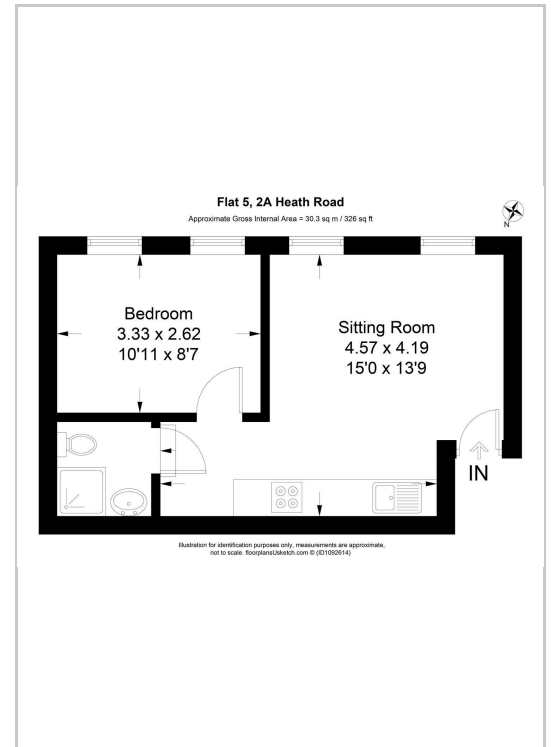
A short walk from Twickenham Station the flat boasts excellent transport links and is surrounded by a vibrant, beautiful and highly-sought after neighbourhood with excellent local amenities.

Please note - There is no parking provided with this property and residents are unable to apply for a residential parking permit as part of the council's conditions for the building's planning consent.

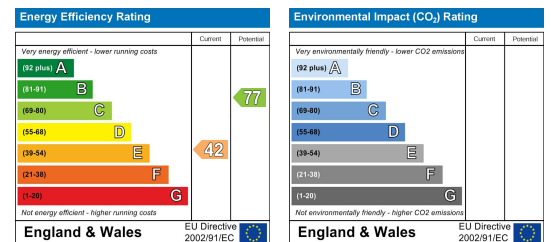
Area Map



Floor Plans



Energy Efficiency Graph



These particulars, whilst believed to be accurate are set out as a general outline only for guidance and do not constitute any part of an offer or contract. Intending purchasers should not rely on them as statements of representation of fact, but must satisfy themselves by inspection or otherwise as to their accuracy. No person in this firm's employment has the authority to make or give any representation or warranty in respect of the property.

68 Streatham Hill, London, SW2 4RD
 Tel: 0208 677 6608 ~ Email: mail@emmasestateagents.co.uk
 VAT No: 248 9798 28 ~ Company Registered in England and Wales No. 10219095

