

Emma's



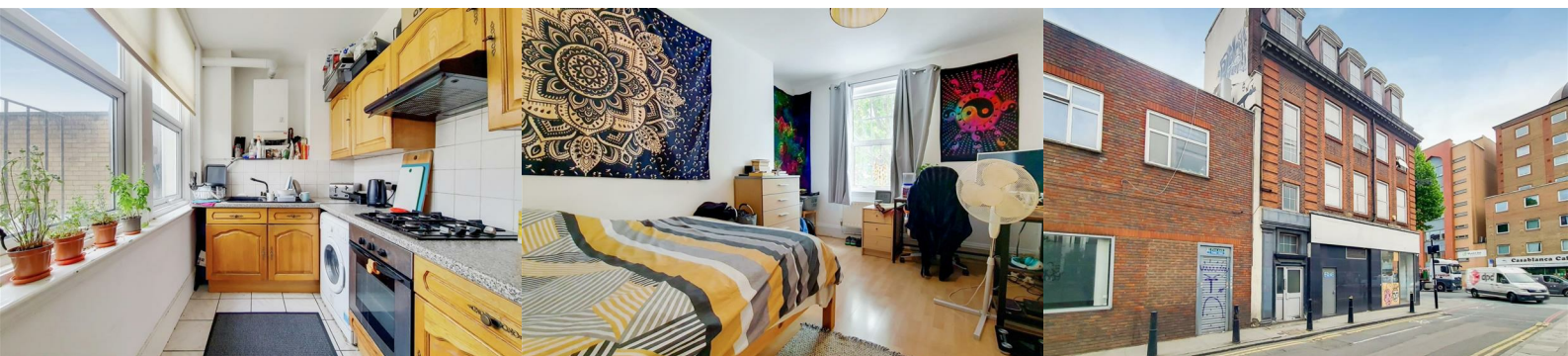
97 - 99 Whitechapel Road

, London, E1 1DT

£3,100 Per Calendar Month



Light and spacious three bedroom flat, with separate living room and kitchen, and two bathrooms, one of which is ensuite, decorated in neutral décor. A short walk from Aldgate East and Whitechapel Stations the flat boasts excellent transport links and local amenities.



Light and spacious three double bedroom, second floor flat with two bathrooms and separate living room kitchen.

Living room 235 (71.63m)

The spacious living room has windows along the outside walls and is on the corner of Whitechapel Road. It is light and neutrally decorated, with wood laminate floors.

Kitchen 80 (24.38m)

The separate kitchen has ample storage space and modern appliances.

Master bedroom 200 (60.96m)

The large master bedroom faces the front of the building and looks out over Whitechapel Road.

Master ensuite

The ensuite bathroom is tiled floor to ceiling and has a spacious shower.

Bedroom 2 150 (45.72m)

The second bedroom, which looks out over Greatorex Street, is well-proportioned and light.

Bedroom 3 92 (28.04m)

The third bedroom, which whilst the smallest of the three bedrooms, is a well-proportioned double bedroom and has a built in wardrobe.

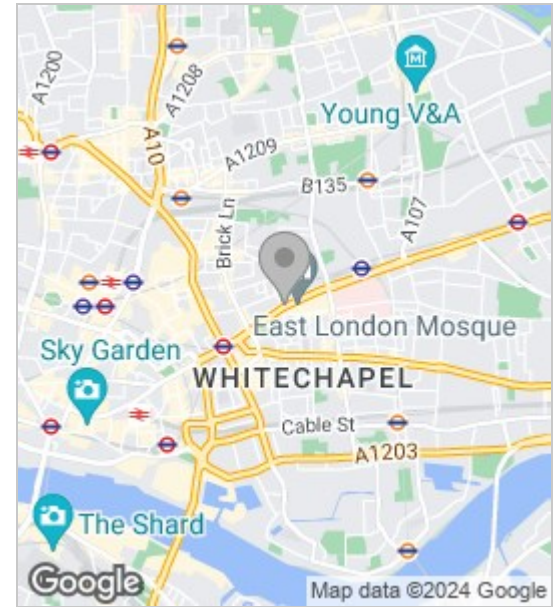
Bathroom

The master bedroom is generously sized and has a bath-shower combination.

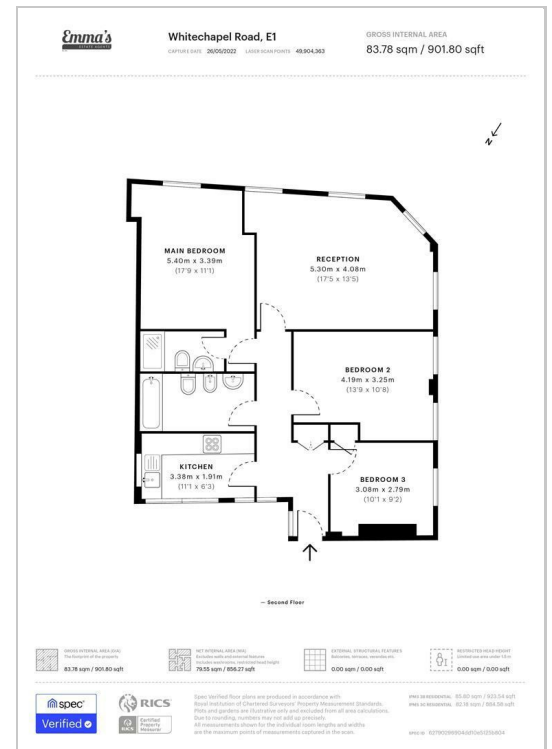
Decorated in neutral decor throughout with modern fittings and fittings the flat is located on Whitechapel Road in the heart of a vibrant neighbourhood. With excellent local amenities the property is a short walk from both Aldgate East and Whitechapel Station.

The building benefits from a wide and spacious communal hallway which has ample space on the first floor for bicycles to be securely stored.

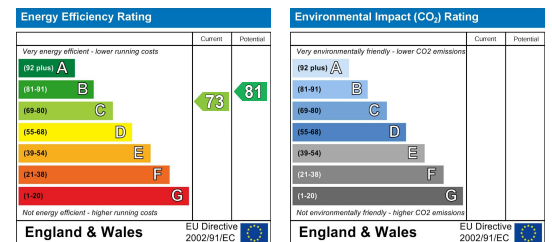
Area Map



Floor Plans



Energy Efficiency Graph



These particulars, whilst believed to be accurate are set out as a general outline only for guidance and do not constitute any part of an offer or contract. Intending purchasers should not rely on them as statements of representation of fact, but must satisfy themselves by inspection or otherwise as to their accuracy. No person in this firm's employment has the authority to make or give any representation or warranty in respect of the property.

68 Streatham Hill, London, SW2 4RD
 Tel: 0208 677 6608 ~ Email: mail@emmasestateagents.co.uk
 VAT No: 248 9798 28 ~ Company Registered in England and Wales No. 10219095

