

# Emma's



197 Streatham High Road

, London, SW16 6EG

£1,300 Per Calendar Month



Beautiful, one double bedroom, top (third) floor flat (no lift) with large windows, neutral modern decor, fixtures and fittings.



Beautiful, one double bedroom, top (third) floor flat with neutral modern decor, fixtures and fittings. The flat has wood-laminate floors throughout.

**Living room kitchen 222 (67.67m)**

The spacious living-room-kitchen looks over the High Road bathing the room in natural light. A modern kitchen comes equipped with conveniences such as washing machine, fridge-freezer, electric oven and gas hob.

**Bedroom 168 (51.21m)**

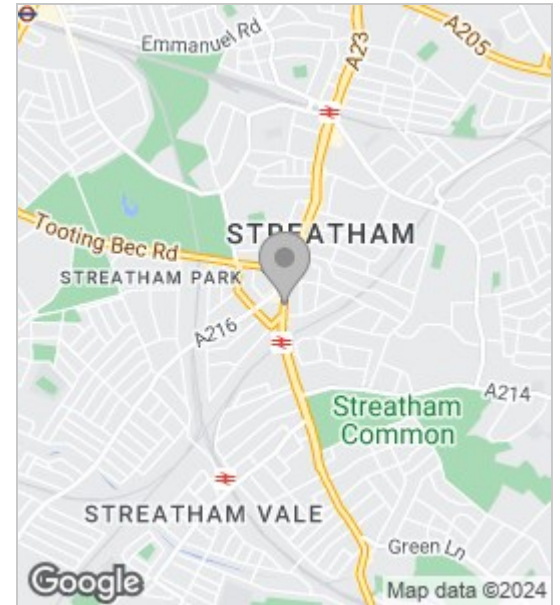
The flat features a well-proportioned bedroom which faces the back of Streatham High Road, sheltering it from any road noise. The room is light and airy with ample floor space and high ceilings.

**Bathroom 37 (11.28m)**

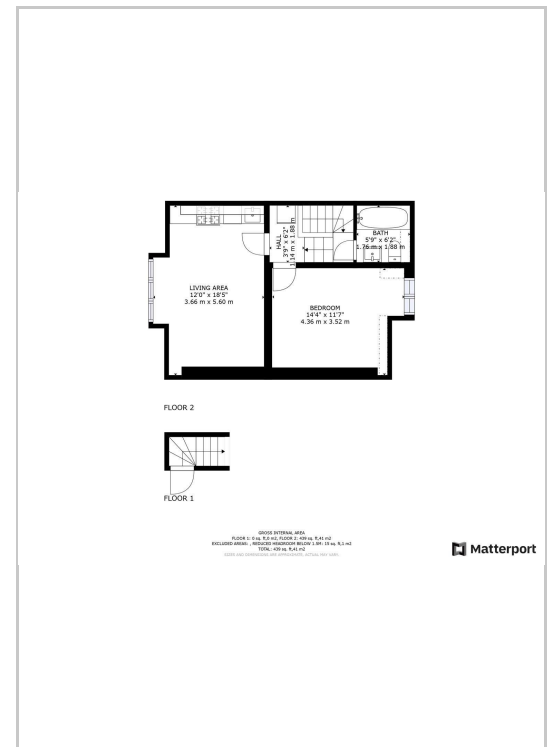
A separate bathroom containing all white fittings including a shower-bath.

Located moments from Streatham Station the flat benefits from excellent transport connections as well as a desirable and vibrant local neighbourhood with local amenities. The flat is also within easy walking distance of the beautiful Tooting Bec Common.

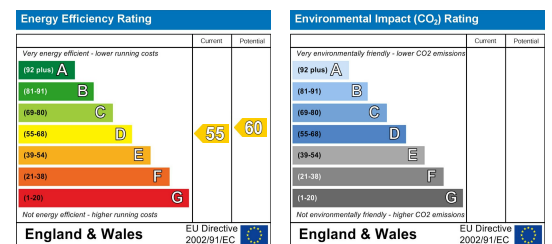
Area Map



Floor Plans



Energy Efficiency Graph



These particulars, whilst believed to be accurate are set out as a general outline only for guidance and do not constitute any part of an offer or contract. Intending purchasers should not rely on them as statements of representation of fact, but must satisfy themselves by inspection or otherwise as to their accuracy. No person in this firms employment has the authority to make or give any representation or warranty in respect of the property.

68 Streatham Hill, London, SW2 4RD  
 Tel: 0208 677 6608 ~ Email: mail@emmasestateagents.co.uk  
 VAT No: 248 9798 28 ~ Company Registered in England and Wales No. 10219095

