

Emma's



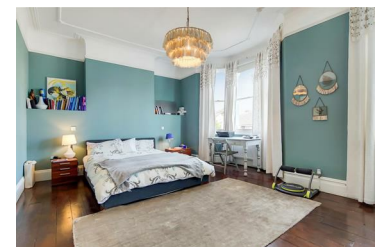
14 Mount Ephraim Lane, London, SW16 1JG

£4,285 Per Calendar Month



Light, spacious and beautifully decorated four/five bedroom, three bathroom terraced Victorian house with private garden, and on-street parking. Located on a quiet residential road the property is in a prime location for amenities and transport.

- Whole house
- Period features retained where possible
- Private rear garden
- Excellent transport connections
- Edwardian terrace
- Stylishly decorated throughout
- Parking available
- Walking distance from Tooting Bec Common



68 Streatham Hill, London, SW2 4RD

Tel: 0208 677 6608 ~ Email: mail@emmasestateagents.co.uk

VAT No: 248 9798 28 ~ Company Registered in England and Wales No. 10219095

