

Emma's



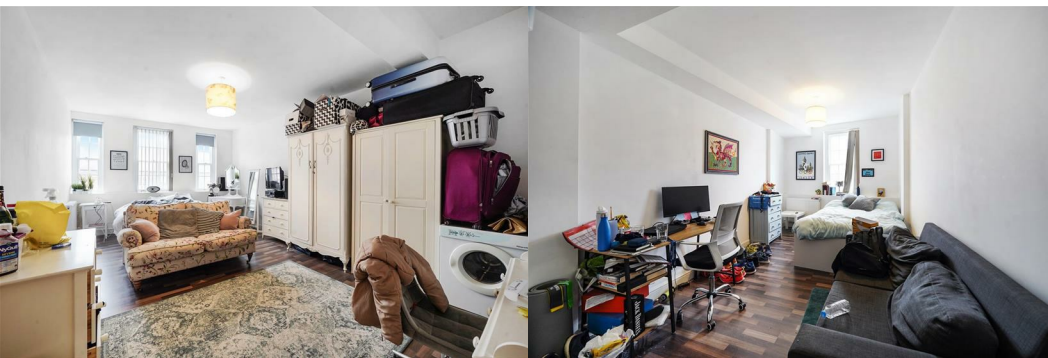
18 King Street

, Twickenham, TW1 3SN

£1,850 Per Calendar Month



Modern, light and spacious two bedroom, two bathroom, furnished, second floor flat in the heart of Twickenham Village, a short walk from Twickenham Station. The flat is decorated with wood-laminate floors and neutral modern décor, fixtures and fittings throughout.



Modern, light and spacious two bedroom, two bathroom flat. The second floor flat forms part of a three storey building overlooking King Street, in the heart of Twickenham Village, a short walk from Twickenham Station.

The flat is decorated with wood-laminate floors and neutral modern décor, fixtures and fittings throughout.

Living room kitchen 300 (91.44m)

The flat features a contemporary fully fitted kitchen with integrated appliances as part of the spacious open plan kitchen living room space which looks out over King Street and has large East facing windows.

Master bedroom 312 (95.10m)

The large master bedroom is bright and has a ensuite bathroom.

Ensuite bathroom

The ensuite bathroom is well-proportioned with neutral decor and a shower.

Bedroom 2 224 (68.28m)

The second bedroom, whilst smaller than the master, is still spacious and light.

Main bathroom

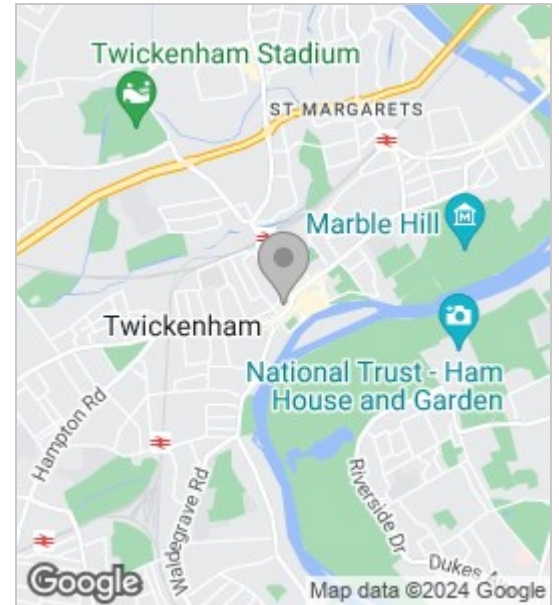
The main bathroom is also neutrally decorated and has a combination bath-shower.

A short walk from Twickenham Station and Thames River waterfront the flat is located in a vibrant neighbourhood boasting excellent local attractions and amenities.

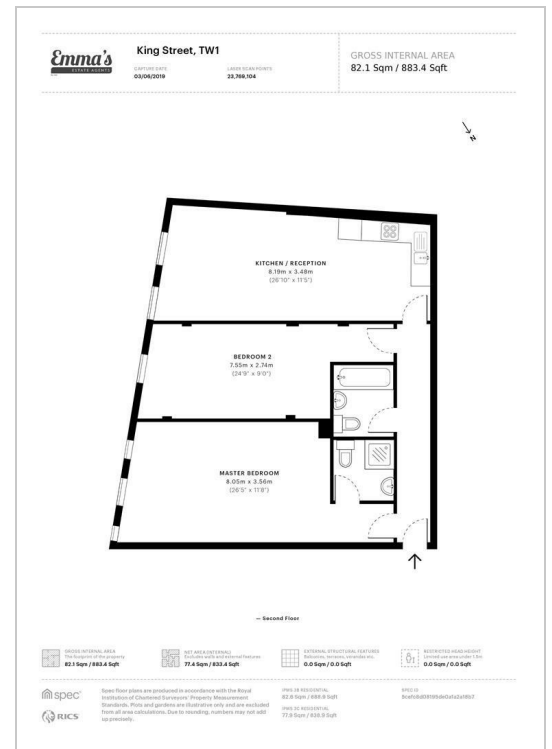
The building benefits from electronic entry system, video intercom, internal bike storage, and CCTV. The flat can be provided furnished or unfurnished.

This property has no parking provisions and residents are unable to apply for residential parking permits through the local council as part of the planning consent for the building.

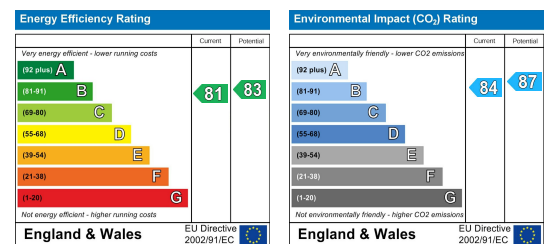
Area Map



Floor Plans



Energy Efficiency Graph



These particulars, whilst believed to be accurate are set out as a general outline only for guidance and do not constitute any part of an offer or contract. Intending purchasers should not rely on them as statements of representation of fact, but must satisfy themselves by inspection or otherwise as to their accuracy. No person in this firm's employment has the authority to make or give any representation or warranty in respect of the property.

68 Streatham Hill, London, SW2 4RD
 Tel: 0208 677 6608 ~ Email: mail@emmasestateagents.co.uk
 VAT No: 248 9798 28 ~ Company Registered in England and Wales No. 10219095

