



Grosvenor Park Road, Walthamstow, London, E17 TO LET

£1,500 PCM

 1  1  1

Unfurnished

- Ground floor flat
- 1 Double bedroom
- Open plan lounge/kitchen/diner
- Double glazed & Gas central heating
- Walthamstow Village location
- Walthamstow Central tube Station: 0.4 mile
- Deposit: £1730.76
- EPC rating: D (68)
- Council tax band: B
- Internal: 617 sq ft (57.3 sq m)

A fantastic one bedroom, ground floor flat on Grosvenor Park Road. Having Orford Road close by is a real plus, with its selection of independent cafes, pubs and restaurants to enjoy. Walthamstow Central station is within walking distance and offers great transport links into Central London via both Tube and Overground trains.

The property itself is well presented throughout. It features an open plan and spacious kitchen/lounge, generously sized double bedroom and family bathroom.

Great flat, great location. Shall we take a look...?

Grosvenor Park Road, Walthamstow, London, E17

DIMENSIONS

Entrance

Via front door leading into:

Open plan lounge/kitchen/diner

12'1 x 15'5 (3.68m x 4.70m)

Access to rear garden.

Inner Hallway

Doors To:

Bedroom

15'5 x 14'10 (4.70m x 4.52m)

Bathroom

7'10 x 5'9 (2.39m x 1.75m)

Rear garden

approx 40' (approx 12.19m)

Additional Information:

Length of tenancy - 12 months with 6 month break clause.

Local Authority: London Borough Of Waltham Forest

Council Tax Band: B

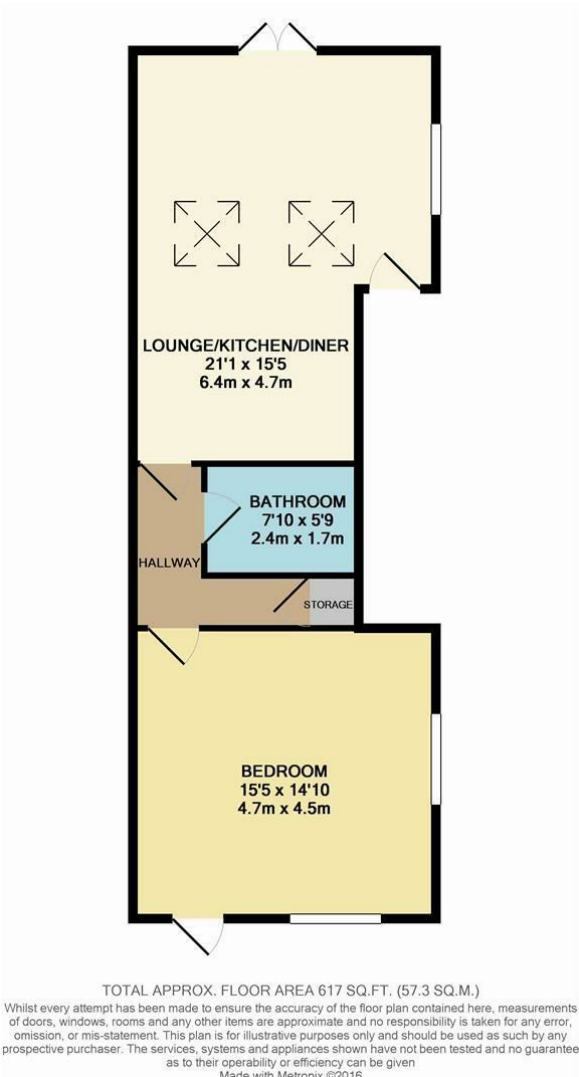
Notice:

All photographs are provided for guidance only.

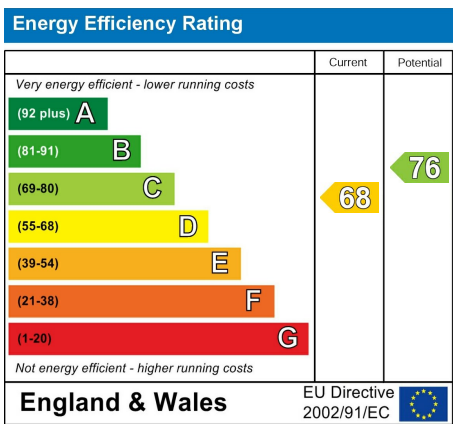
Disclaimer:

We endeavour to make our sales particulars as accurate and reliable as possible, however, they do not constitute or form part of any offer or contract, nor may it be relied upon as representations or statements of fact. All measurements are approximate and should be used as a guide only. Any systems, services or appliances listed herein have not been tested by us and therefore we cannot verify or guarantee they are in working order. Details of planning and building regulations for any works carried out on the property should be specifically verified by the purchasers' conveyancer or solicitor, as should tenure/lease information (where appropriate).

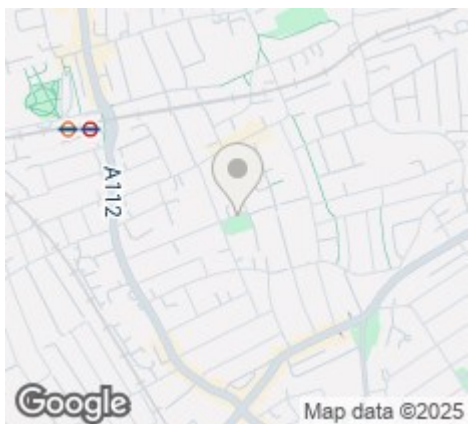
FLOORPLAN



EPC RATING



LOCATION



hello@estateseast.co.uk 020 8520 9300 estateseast.co.uk

