



MURTON WAY, YORK

14 Murton Way, Osbaldwick, York, North Yorkshire, YO19 5UN

PETER
MOODY
& COMPANY

MURTON WAY, YORK

14 Murton Way, Osbaldwick, York, North Yorkshire, YO19 5UN

- Spacious Detached Bungalow
- 3 Double Bedrooms
- 3 Reception Rooms
- Double Garage
- Corner Plot Gardens

York City Centre 3½.Miles. York Station 4 Miles. Leeds 33 Miles

Description

A rare opportunity to acquire a spacious detached bungalow standing on a corner plot within the village of Osbaldwick. The property extends to over 1800 sq.ft. and benefits from gas central heating and UPVC double glazing. There are three double bedrooms, all of which have fitted wardrobes, an en suite shower room to the master bedroom and a house bathroom. Both the living and dining rooms have feature fireplaces whilst perhaps the real hub of the property is the superb conservatory extending to almost 23ft in length. The final door from the inner hall leads to a kitchen with range of fitted units and there is also a useful utility room. The bungalow stands in corner plot gardens that are south facing to the rear and is approached via a double width gated driveway leading to a detached double garage. Bungalows rarely come onto the open market within the village and an early viewing is strongly recommended.

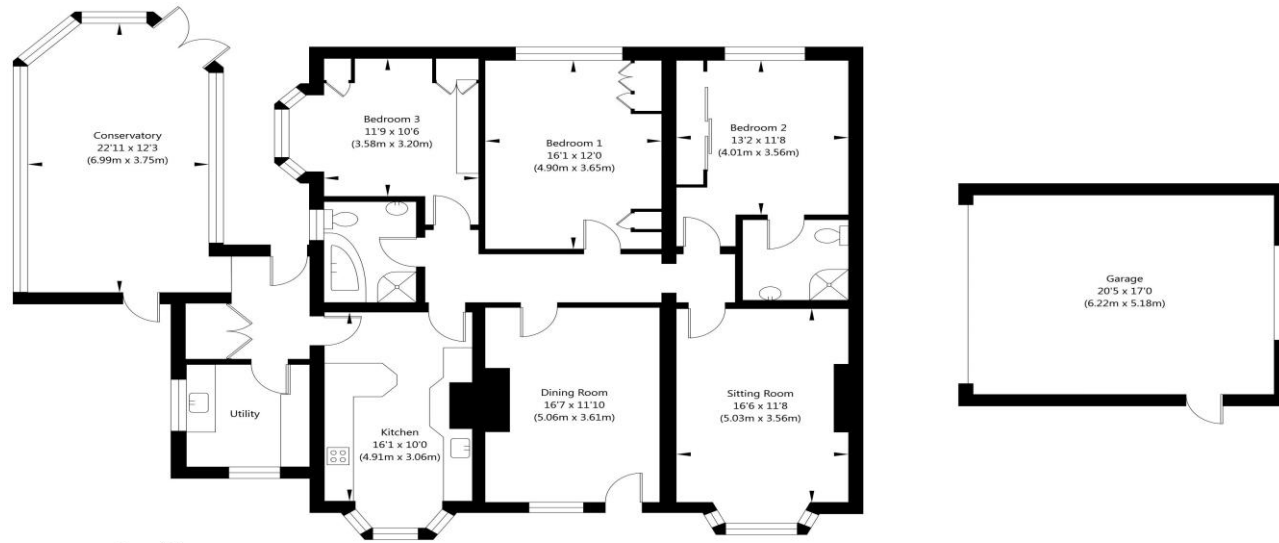
Location

The village of Osbaldwick lies only 3 miles from York city centre, 1 mile from the A64 and 2 miles from the York University campus at Heslington. Despite this highly accessible location it retains a village feel with a central green, church, pub and local shops. There are regular bus services to the city centre and York railway station is around miles to the west with trains to London taking less than 2 hours.

£495,000



FLOOR PLANS



Ground Floor
GROSS INTERNAL FLOOR AREA
APPROX. 1806 SQ FT / 167.77 SQ M

NOT TO SCALE - FOR ILLUSTRATIVE PURPOSES ONLY
APPROXIMATE GROSS INTERNAL FLOOR AREA 1806 SQ FT / 167.77 SQ M - (Excluding Garage)
All measurements and fixtures including doors and windows are approximate and should be independently verified.
www.exposurepropertymarketing.com © 2023



