



KEYPOINT

17-23 High Street | Slough | SL1 1DY



DEDICATED MEETING ROOMS



**T-POINT
YOUR PLACE
TO MEET
AND GREET**



**SPACE AVAILABLE
FROM 100 SQ FT
TO 30,000 SQ FT**





KEY POINTS



CONCIERGE RECEPTION



DEDICATED MEETING ROOMS WITH WIFI



COFFEE POD



CONTEMPORARY BUSINESS LOUNGE AND COLLABORATION SPACE



FULLY FURNISHED WORK READY SPACE AVAILABLE



INSTANT FIBRE CONNECTIVITY



EXCELLENT CAR PARKING RATIO OF 1:424 SQ FT



24 CYCLE SPACES WITH CYCLE REPAIR STATION



NEW SHOWER AND CHANGING FACILITIES



2 x REFURBISHED PASSENGER LIFTS



NEW SUSPENDED CEILINGS WITH FLAT PANEL LED LIGHTING



FULLY ACCESSED RAISED FLOORS



MALE, FEMALE AND DISABLED FACILITIES



EPC 'B'



NEW VRF AIR CONDITIONING SYSTEM





THE KEY AREAS

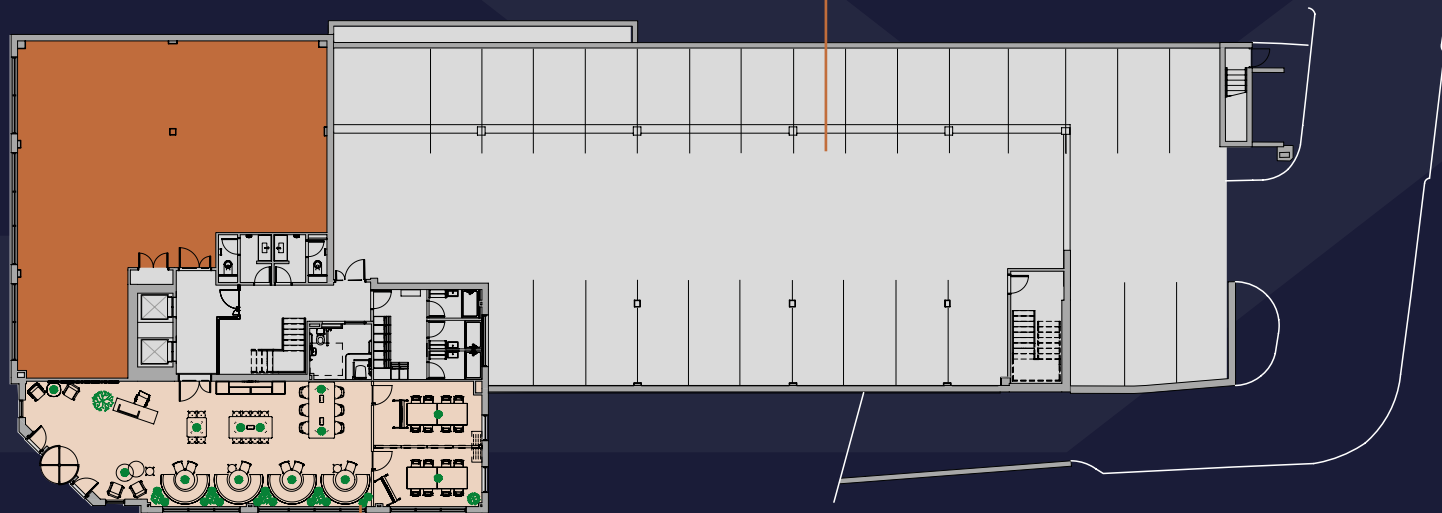
Keypoint is a striking, prominent and high quality office building, located close to town centre amenities and transport links.

Styled with brick elevations and large feature windows, its large glazed entrance leads to a newly extended reception, corporate business lounge and collaboration space designed as an additional meeting point.

Keypoint offers flexible floorplates accommodating between 100 and 30,000 sq ft with good onsite parking at a ratio of 1:424 sq ft.

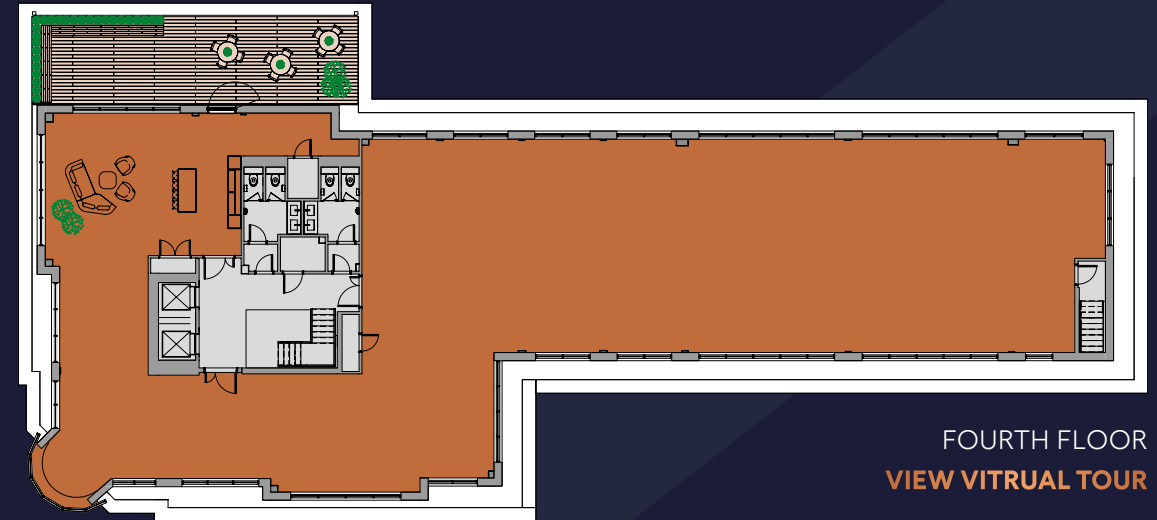
FLOOR	SQ FT	SQ M
PART FOURTH	3,250	302
THIRD	7,341	682
SECOND	7,341	682
FIRST	6,915	642
GROUND	1,857	173

ONSITE PARKING RATIO 1:424 SQ FT



GROUND FLOOR
VIEW VITRUAL TOUR

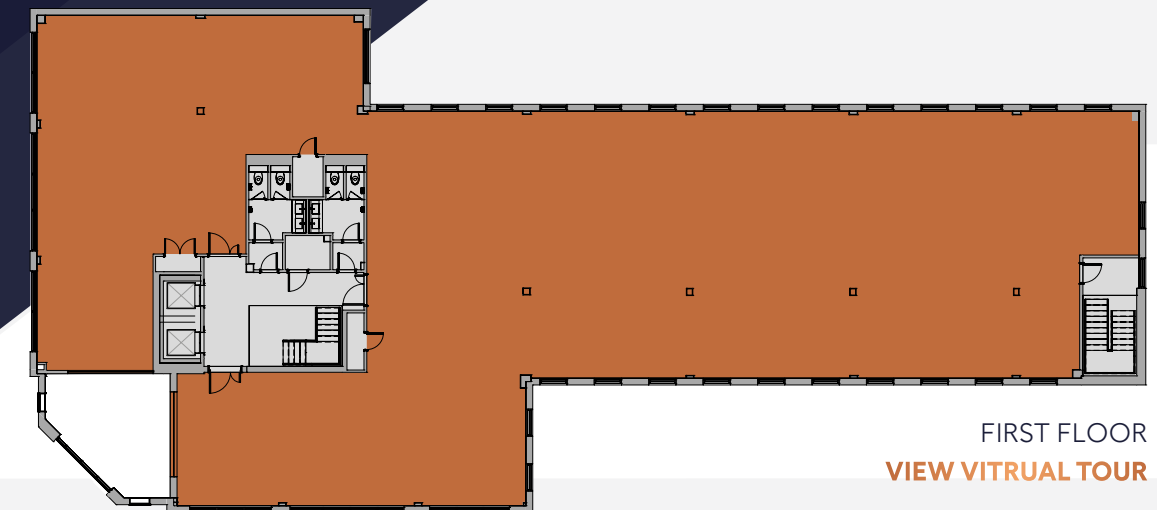
CONTEMPORARY BUSINESS LOUNGE AND COLLABORATION SPACE



FOURTH FLOOR
VIEW VITRUAL TOUR



THIRD FLOOR
VIEW VITRUAL TOUR



FIRST FLOOR
VIEW VITRUAL TOUR



24 CYCLE SPACES WITH CYCLE REPAIR STATION



SHOWERS/ CHANGING ROOMS WITH LOCKER FACILITIES





POINTS TALLY

4,600

THRIVING BUSINESSES ARE BASED IN SLOUGH

42

OPEN PARKS AND SPACES FOR EXERCISE AND RELAXATION

1st

FOR PRODUCTIVITY IN THE UK*

1st

SLOUGH HAS THE MOST GLOBAL CORPORATE HQs OUTSIDE LONDON.

2nd

HIGHEST START-UP RATE IN THE UK

8th

IN EUROPE FOR BUSINESS FRIENDLINESS

£9bn

SLOUGH HAS A BOOMING £9 BILLION LOCAL ECONOMY

£1.5bn+

BEING INVESTED IN REGENERATION ACROSS THE BOROUGH



- 1** Burlington Road Car Park
- 2** Thames Valley University regeneration site, including 1,400 new homes
- 3** Moxy Marriot Hotel (opening early 2021)
- 4** Slough Bus Station
- 5** The Curve Cultural Centre
- 6** Travelodge and Buzz Gym
- 7** Holiday Inn Express
- 8** Tesco's Extra
- 9** Queensmere Observatory Shopping Centre
- 10** Premier Inn

*Centre for Cities, 'The role of place in the UK's productivity puzzle' (2017)



The River Thames, Windsor



Slough Ice Arena



Slough High Street



Rowing at Dorney Lake



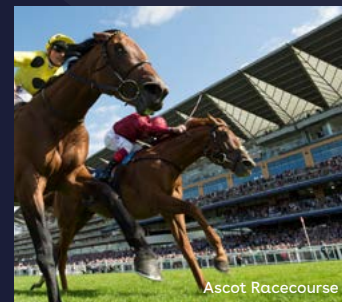
Browns Brasserie & Bar, Windsor



Côte Brasserie, Windsor



Herschel Park



Ascot Racecourse

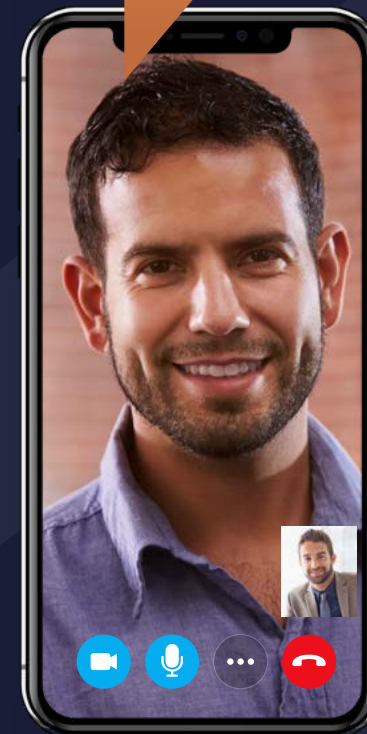


Crowd during Harry and Megan's royal wedding, Windsor

Slough is changing fast, and with it the range of businesses it attracts. Here are the kinds of companies we see moving in:

THE MOVER

We've been based in London for 20 years. Rising rents and cost of housing are making London unsustainable. Now that the Elizabeth line is on the horizon it's time for us to consider alternative locations.



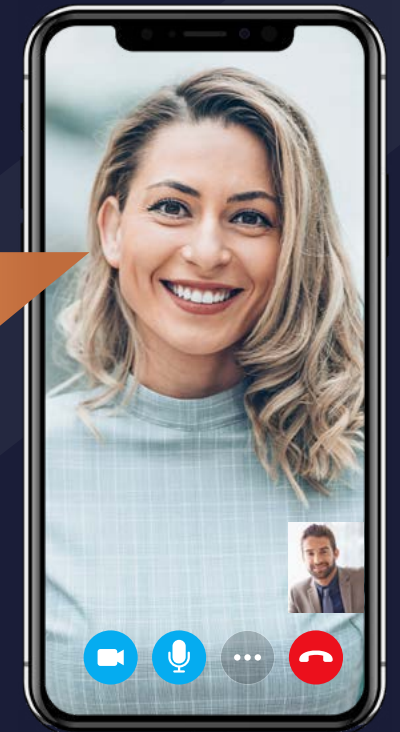
THE RISER

We've been working from serviced offices since we started out in 2014. With our business growing by 10% each year, we need offices that express our brand personality.



THE HIGH FLYER

With offices in Israel, the USA and the UK, our people have to be able to catch a flight at very short notice. Heathrow is only 19 minutes drive away and will soon be even closer. Slough is a great location for the business traveller.



Marriott Moxy Hotel (CGI)



Marriott Moxy Hotel (CGI)



Outdoor exercise equipment

SLOUGH VOTED THE BEST PLACE TO WORK IN THE UK*

Slough is a well-established business hub in the Thames Valley. It provides a base for some of the world's leading brands and stands as the second most successful place nationwide for start-ups. Here is a selection of businesses who have located their headquarters in Slough:



*Glassdoor, Best Places to Work 2018

RIGHT UP YOUR STREET



POINT TO POINT

Situated on the M4 motorway between junctions 5, 6 and 7, Slough is one of the Thames Valley's most well connected towns. Keypoint is just a 7 minute walk from Slough train station which currently provides links to London Paddington in 16 minutes.

The Elizabeth line offers further links to central London, the City and the East of London.

With Heathrow Airport less than a 20 minute commute, Keypoint is superbly located for international travel.

TRAINS TO LONDON PADDINGTON UP TO EVERY 6 MINUTES



Slough train station

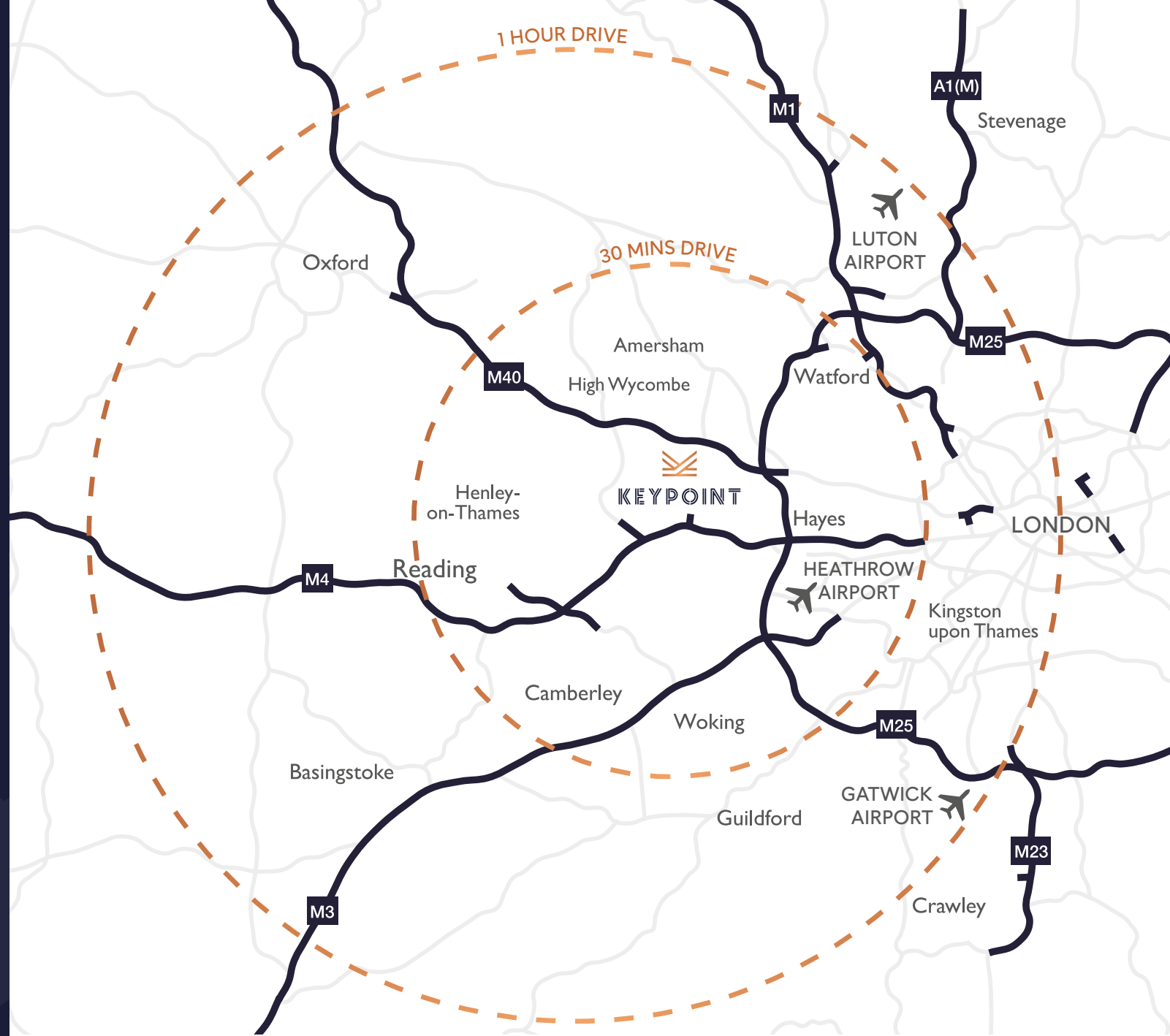
MORE THAN 70 BICYCLES AVAILABLE TO HIRE



Bicycles to hire



HEATHROW AIRPORT A 19 MINUTE DRIVE



OXFORD
42 MINS

READING
15 MINS

WINDSOR & ETON
8 MINS



LONDON PADDINGTON
19 MINS

HEATHROW AIRPORT
36 MINS

GATWICK AIRPORT
90 MINS

BIRMINGHAM
102 MILES

BRISTOL
97 MILES

M4 (J6)
2 MILES



M25 (J16)
5 MILES

HEATHROW AIRPORT T5
7 MILES

CENTRAL LONDON
22 MILES

READING
22 MINS

TWYFORD
15 MINS

MAIDENHEAD
8 MINS



TOTTENHAM COURT ROAD
32 MINS

LIVERPOOL STREET
38 MINS

CANARY WHARF
46 MINS

Owned and managed by

