

TURNKEY
WORK READY SPACE

KEYPOINT
17 - 23 High Street | Slough | SL1 1DY



Keypoint offers four TURNKEY work ready office suites. This striking first-class accommodation provides a flexible working environment with a variety of meeting rooms, phones booths, breakout areas and hot desking.

Be part of a thriving business community at Keypoint. We are set up to accommodate a range of companies from early stage business, to SME's to larger corporates seeking to establish a highly accessible regional office hub.

4 UNIQUE/QUALITY WORK READY OFFICE SUITES



FULLY FURNISHED WORK READY SPACE



MODERN DESIGN



QUICK AND EASY OCCUPATION



YOUR OWN SPACE



FLEXIBLE LEASE TERMS



INSTANT CONNECTIVITY



BUSINESS LOUNGE AND CONCIERGE RECEPTION



SHOWER AND CYCLE FACILITIES



FIRST FLOOR

SUITE A

1,684 SQ FT 156 SQ M
DENSITY 1:8

- 20 Desks
- 1 Meeting room
- 2 Phone rooms
- 1 Hot desk area
- 1 Welcome area
- 1 Teapoint and breakout area
- 1 Print area with comms storage



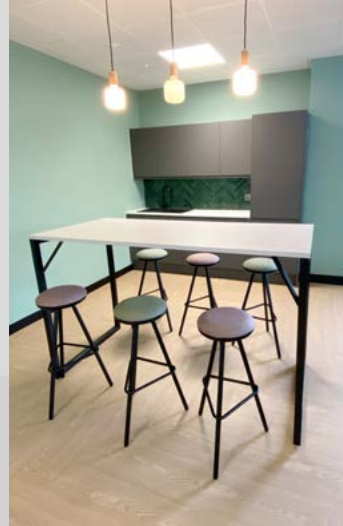


FIRST FLOOR

SUITE B

1,203 SQ FT 112 SQ M
DENSITY 1:6

- 18 Desks
- 1 Meeting room
- 1 Small welcome area with banquette seating
- 1 Teapoint and breakout area
- 1 Print area with comms storage



SUITE C

4,027 SQ FT 374 SQ M
DENSITY 1:8

- 48 Desks
- 3 Meeting rooms
- 1 Office (optional 4th meeting room)
- 1 Informal booth
- 2 Phone rooms
- 12 Hot desks / breakout
- 1 Teapoint and breakout area
- 1 Comms / store room
- 1 Print station area

GROUND FLOOR

SUITE A

1,857 SQ FT 173 SQ M
DENSITY 1:8

- 20 Desks
- 2 Meeting room
- 1 Hot desk area
- 1 Furniture booth
- 1 Welcome area
- 1 Teapoint and breakout area
- 1 Print area with comms storage



Owned and managed by

