



Quicken Tree Cottage
The Fence | St. Briavels | Lydney | Gloucestershire | GL15 6QG

INTRODUCTION

Quicken Tree Cottage

A charming, rose-covered stone cottage dating back to circa 1720, set in an elevated and commanding position within a highly sought-after location, enjoying spectacular views. This delightful southwest-facing home offers four bedrooms plus a study area, two inviting reception rooms, and is available with no onward chain. Nestled within just over half an acre of beautifully maintained seasonal gardens, it provides the perfect setting to listen to birdsong and watch the sun set over the breathtaking Wye Valley.

- A pretty, detached four-bedroom stone cottage with breathtaking views
- Traditional country kitchen featuring an iconic Aga
- Expansive reception room with a cosy window seat and a woodburning stove
- Four well-proportioned bedrooms, two bathrooms, and a study area on the first floor
- Delightful, enchanting gardens, including a vibrant wildflower meadow
- Spectacular views over Bigsweir Bridge and the bend in the River Wye
- Generous off-road parking and a convenient garage
- Offered with the benefit of no onward chain

Location and situation

St Briavels is a picturesque village nestled in the heart of the Forest of Dean, offering a unique blend of rural charm and historical significance. With its ancient stone cottages, and the impressive St Briavels Castle at its core, the village exudes a timeless appeal. The local community is friendly and welcoming, with amenities such as a village shop, a post office, and a popular pub. St Briavels also benefits from a thriving local primary school and is well-known for its excellent walks and outdoor activities, with the surrounding forest providing ample opportunities for hiking, cycling, and nature exploration. The village has a real sense of tranquility, making it the perfect location for those seeking an escape from the hustle and bustle of city life.

The surrounding area offers convenient access to a number of regional towns and cities. Bristol, located approximately 25 miles to the southeast, is easily reachable by car, offering a wide range of shopping, cultural, and dining options. Chepstow is just 9 miles to the south, while Monmouth, with its historic streets and riverside setting, is around 5 miles away. Gloucester, with its renowned cathedral and excellent shopping facilities, is about 24 miles to the east, and Cheltenham, famous for its regency architecture and festivals, is around 27 miles to the northeast. Families are well-served in terms of education, with St Briavels Primary School in the village, as well as access to secondary schools and independent schools in nearby towns such as Chepstow, Monmouth, and Gloucester.





STEP INSIDE

Quicken Tree Cottage

Quicken Tree Cottage takes its name from the trees in its own private woodland and is full of character and charm, offering everything you would expect from a traditional country cottage.

The solid oak kitchen, painted in Farrow & Ball, immediately catches the eye, with matching oak worktops enhancing its rustic appeal. A Belfast sink, integrated dishwasher, and electric Aga sit at the heart of the space, while the original bread oven remains as a charming nod to the past. There's room for a dining table at the centre and fitted shelves for cookbooks. The kitchen also enjoys easy access to the front terrace—perfect for al fresco breakfasts and summer dining.

Adjoining the kitchen is a versatile utility/boot room, providing ample space for white goods, coats, and boots. An electric double oven offers a practical alternative to the Aga, and a modern cloakroom is conveniently accessed from this area.

There are two main reception rooms: a cosy sitting room with a stone fireplace, currently used as a music room, and a magnificent, generously sized living and dining space. This impressive room is arranged as both a comfortable lounge, complete with a beautiful stone fireplace and wood-burning stove, and a formal dining area ideal for entertaining. Five windows fill the space with natural light, including a charming bay window with a built-in seat—an inviting spot to admire the wonderful views.

Upstairs, there are four bedrooms and an open landing area, currently used as a home office, which was previously a bedroom before the property was extended. The principal bedroom is exceptionally bright and airy, with four dual-aspect windows allowing light to flood in. All of the bedrooms enjoy stunning views across the Wye Valley. A family bathroom and a separate shower room complete the first floor.











SELLER INSIGHT

“The moment we laid eyes on Quicken Tree Cottage, we knew it was the one,” say the current owners. “A south-facing gem nestled in the countryside, it had the most breathtaking views—exactly what we had been dreaming of. Moving out of Bristol, we were looking for a renovation project, something with character where we could make our mark. This charming two-up, two-down cottage was just that, and over the past 44 years, it has grown with us, evolving into a truly special home.”

“We started with a full renovation—reroofing, replastering, new flooring, windows, and stairs,” the owners continue. “Along the way, we uncovered a hidden treasure: an old bread oven built into the side of the house, now opening into the kitchen. As our daughter grew and friends became a constant presence, we extended the house, doubling its size while keeping every change in harmony with the original cottage.”

This is the ideal home for everyday life and entertaining alike. “The large sitting room is a favourite,” say the owners, “with oak floorboards and a bay window seat offering spectacular views—perfect for watching the birds. The inglenook fireplace with a log burner has hosted everything from quiet evenings to lively country dances and even seated dinners for 22. Stepping outside, the front terrace is our go-to spot for sundowners, with sunsets and sunrises that never cease to amaze. The garden, thoughtfully zoned, features a wildlife pond, wildflower meadow, and herbaceous borders, all enhanced by outdoor lighting.”

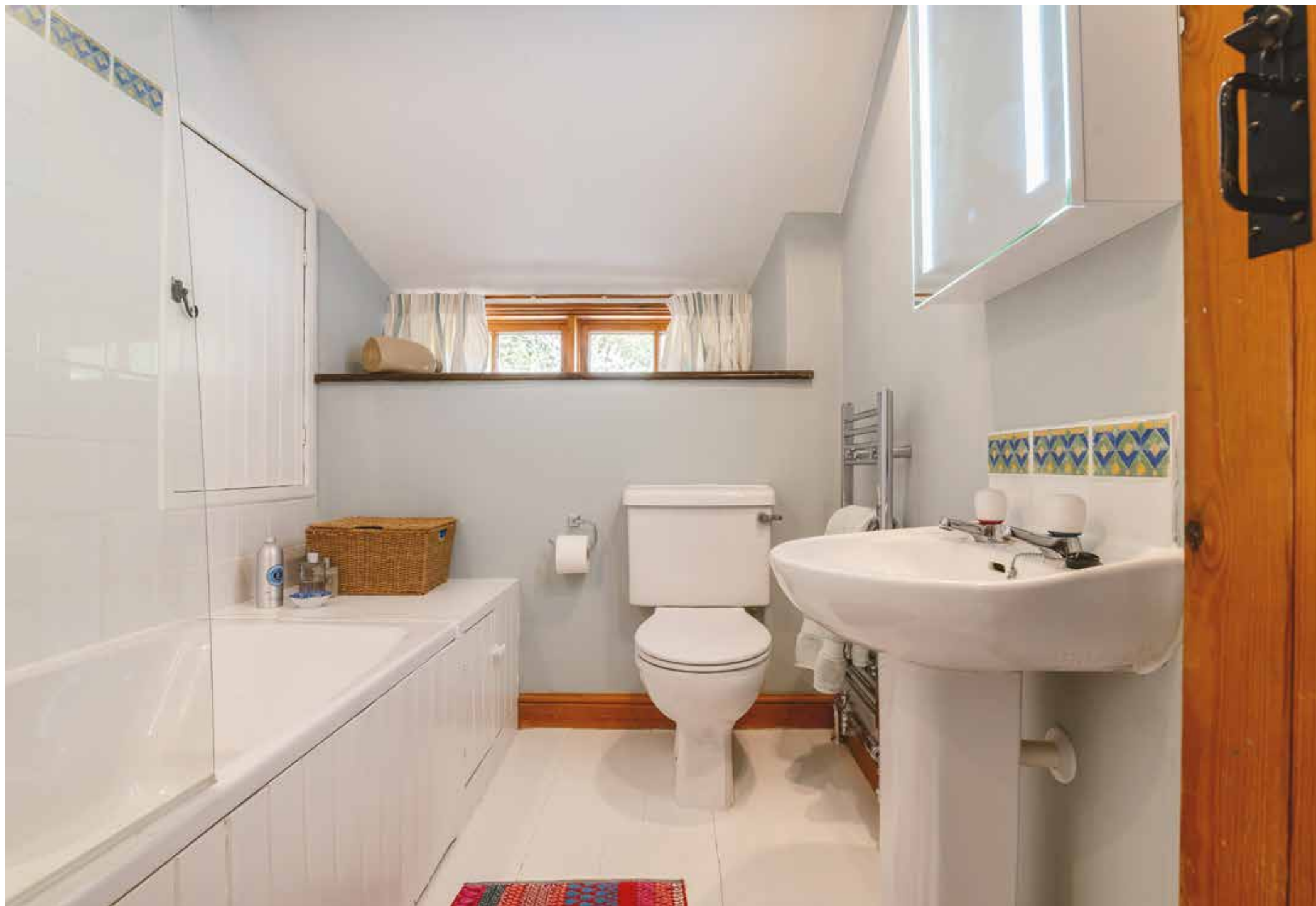
The local area has much to offer, too. “Beyond the garden, the beauty continues,” say the owners. “A gate leads straight into Cadora Woods, with bluebell carpets in spring and paths stretching all the way to the pub in Redbrook and beyond. The community here is warm and welcoming, with many neighbours now lifelong friends. Practicalities are well covered too, with excellent transport links to Bristol, Cardiff, and London, plus great local schools, shops, and amenities.”

“After 44 wonderful years, we will deeply miss this home—the peace, the birdsong, the house martins at dawn and dusk. But it’s time for someone new to fall in love with Quicken Tree Cottage, just as we did.”*

* These comments are the personal views of the current owner and are included as an insight into life at the property. They have not been independently verified, should not be relied on without verification and do not necessarily reflect the views of the agent.









STEP OUTSIDE

Quicken Tree Cottage

Step outside and immerse yourself in the sights and sounds of nature, with birdsong filling the air as you enter the beautifully designed seasonal gardens. From the terrace in front of the property, take in the breathtaking view of Bigsweir Bridge and the sweeping bend of the River Wye, all framed by rolling countryside. This thoughtfully positioned terrace is perfect for al fresco dining, where you can unwind and watch the sun set behind the hills.

The gardens unfold in a series of distinct and enchanting spaces, including neat lawns, a peaceful pond, and secluded seating areas framed by a water feature. Winding pathways weave their way past a magnificent magnolia tree, leading up towards the greenhouse and productive vegetable beds, before opening out into a wildflower meadow. At the top of the garden, a fence and gate provide privacy from the footpath, which leads beyond to a small woodland.

A public footpath runs alongside the property and continues through the uppermost part of the garden, offering direct access to scenic walks through Cadora Woods or a pleasant stroll down to the pub in Redbrook. The surrounding network of footpaths stretches for miles, inviting endless opportunities to explore the countryside.

At the entrance, a five-bar gate opens onto a long driveway leading up to the garage, flanked by a vibrant cut-flower bed. Additional off-road parking is available at the top of the driveway.

Designed for year-round interest, the gardens offer a changing tapestry of colour—daffodils brighten the spring, herbaceous borders flourish in summer, and the landscape remains a haven for wildlife throughout the seasons.

Directions

W3W: cackling.rinses.greyhouse







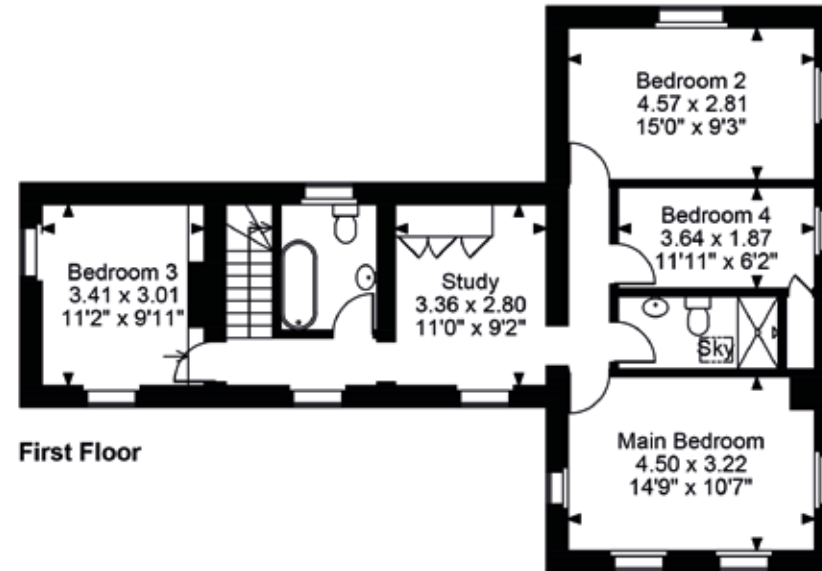
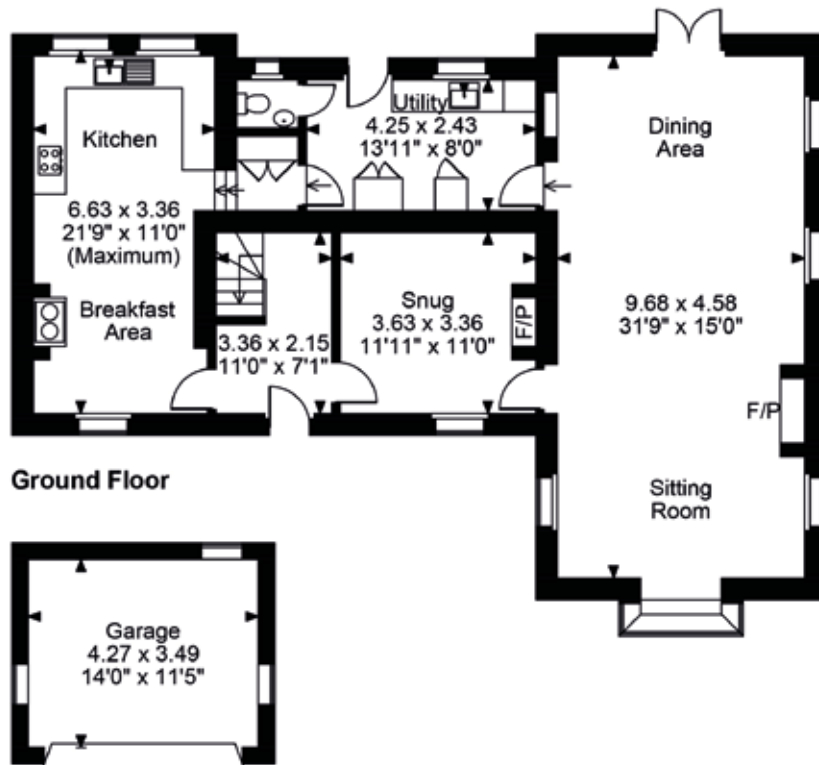
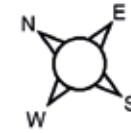
Quicken Tree Cottage, The Fence, St. Briavels, Lydney

Approximate Gross Internal Area

Main House = 1973 Sq Ft/183 Sq M

Garage = 160 Sq Ft/15 Sq M

Total = 2133 Sq Ft/198 Sq M



Council Tax Band: F
Tenure: Freehold

FOR ILLUSTRATIVE PURPOSES ONLY - NOT TO SCALE
The position & size of doors, windows, appliances and other features are approximate only.
© ehouse. Unauthorised reproduction prohibited. Drawing ref. dig/8638956/OHL



Fine & Country Ross on Wye
52A Broad Street, Ross-on-Wye, Herefordshire HR9 7DY
+441989 764141 | ross@fineandcountry.com

