

[www.jeffreygross.co.uk](http://www.jeffreygross.co.uk)

CARDIFF

VALE

CAERPHILLY

BRISTOL



*Goetre Fawr*

RADYR

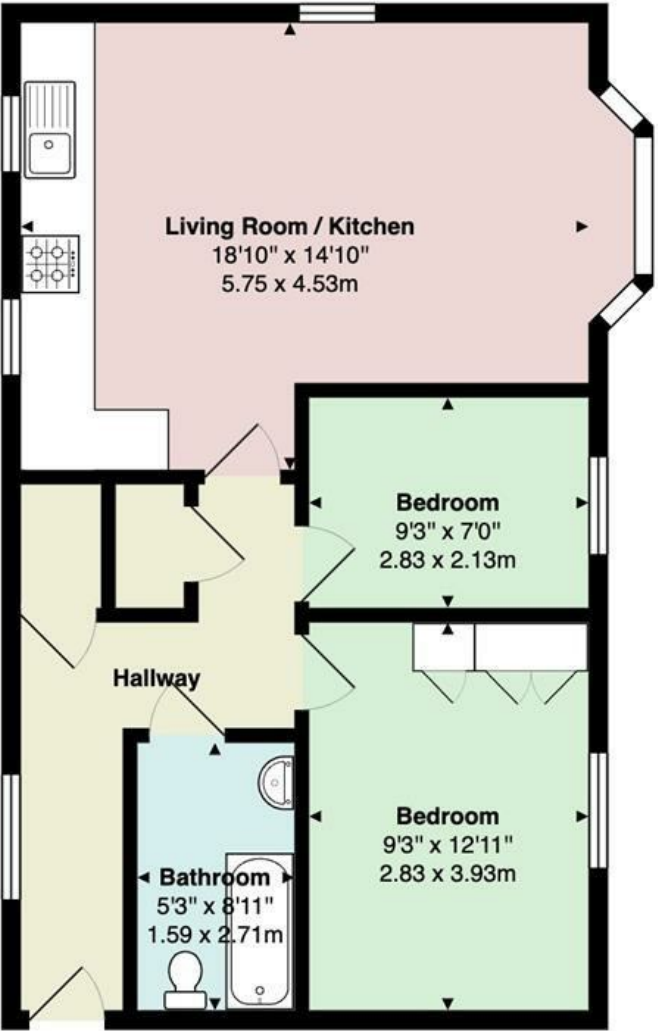




Comments by Ms Cody Byrne

**Property Specialist**  
**Ms Cody Byrne**  
Property Management Co-ordinator

[cody@jeffreycross.co.uk](mailto:cody@jeffreycross.co.uk)



Goetre Fawr

Total Area: 629 ft² ... 58.4 m²

All measurements are approximate and for display purposes only



Comments by the Homeowner



# Goetre Fawr

*Radyr, Cardiff, CF15 8ET*

PCM

**£950 PCM**



2 Bedroom(s)



1 Bathroom(s)



629.00 sq ft



Contact our  
***Pontcanna Branch***

02920 499680

Jeffrey Ross are pleased to market this well presented two bedroom apartment in the Goetre Fawr estate in Radyr. Ideally located in this residential community just minutes walk from Radyr train station where it's just 20 minutes into the Cardiff Central. The property itself comprises of entrance hallway with two storage cupboards, bathroom with bath and shower overhead, master double bedroom with built in wardrobes, second double bedroom, spacious open plan living room / kitchen with certain appliances included (washer-dryer, gas hob, electric oven) and a large bay window. The property is offered unfurnished (as seen in the photos) and further benefits from an allocated parking space.

EPC Rating: B  
Council Tax Band: D

A holding fee of one weeks' rent will be payable to secure the dwelling. This will be deducted from the final balance payable upon moving into the dwelling, subject to a successful application. Jeffrey Ross Limited reserves the right to retain this payment should the applicant have provided false or misleading information at the time of applying for the dwelling or failed to take reasonable steps to enter into the Standard Occupation Contract.



CARDIFF

VALE

CAERPHILLY

BRISTOL

[www.jeffreygross.co.uk](http://www.jeffreygross.co.uk)







Energy Efficiency Rating		
	Current	Potential
Very energy efficient - lower running costs		
(92 plus) A		
(81-91) B		
(69-80) C		
(55-68) D		
(39-54) E		
(21-38) F		
(1-20) G		
Not energy efficient - higher running costs		
England & Wales		EU Directive 2002/91/EC 