

CARDIFF'S HOME FOR
STYLISH SALES
& LETTINGS

JeffreyRoss



R/ O 14-16 RECTORY ROAD
CANTON

R/O 14-16 RECTORY ROAD

CANTON, CF5 1QL - £625 PCM PCM

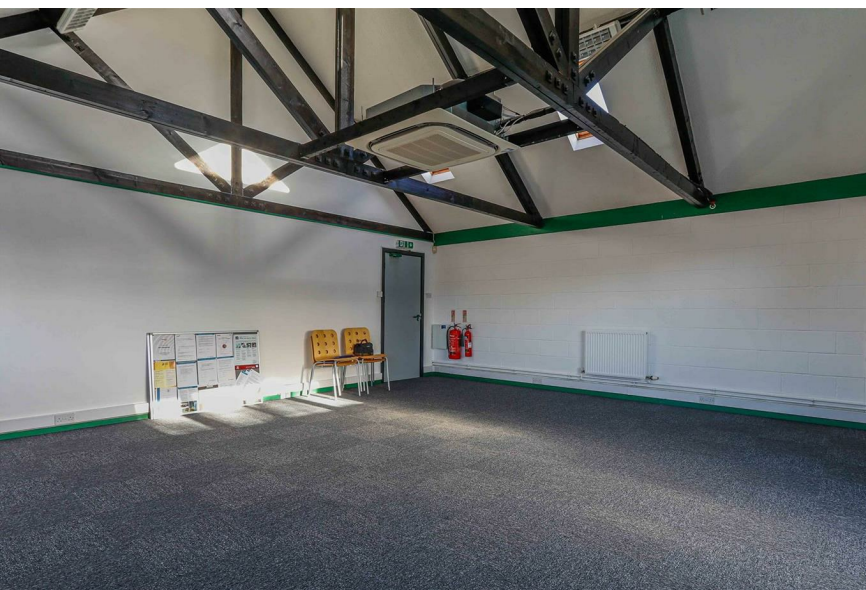
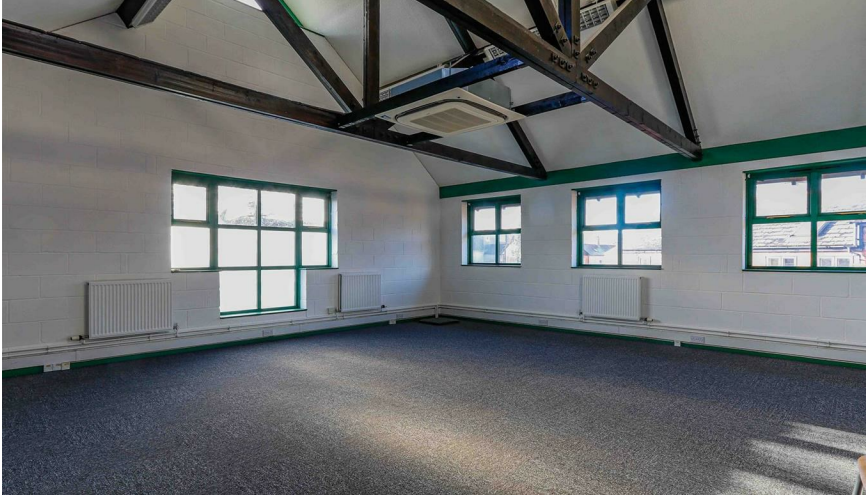
0 bedroom(s) 1 bathroom(s) 492.00 sq ft

In the heart of Canton and tucked away in a gated development of commercial spaces is this immaculately presented, first-floor office space. The property is a great space (circa 492 square feet) and would be a great option for a range of business types. The property further offers communal kitchen area, WC and off-road parking.

For more information or to arrange a viewing, please call the Pontcanna office on 02920499680.

EPC RATING of C

Administration fees and charges are excluded and this will equate to £295+VAT subject to application..



Energy Efficiency Rating		
	Current	Potential
Very energy efficient - lower running costs		
(92 plus) A		
(81-91) B		
(69-80) C		
(55-68) D		
(39-54) E		
(21-38) F		
(1-20) G		
Not energy efficient - higher running costs		
England & Wales	EU Directive 2002/91/EC	

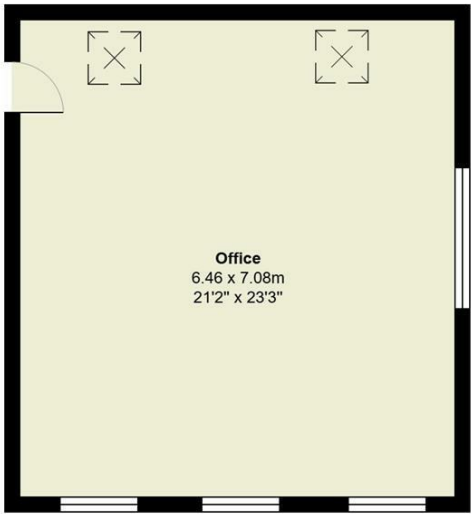
PROPERTY SPECIALIST

Jon Hooper-Nash
jon@jeffreygross.co.uk

Director



Ty Cefn Offices, Radnor Road, Canton



Total Area: 45.7 m² ... 492 ft²
All measurements are approximate and for display purposes only