



WYATT HOUSE

HENSOL CASTLE PARK  
HENSOL









## HENSOL CASTLE PARK

HENSOL, CF72 8GH - £425,000



3 bedroom(s)



2 bathroom(s)



sq ft

An exceptionally stylish contemporary first floor apartment set within Hensol Castle Residential Development. This modern and spacious apartment comprises of a large living dining room with floor to ceiling windows overlooking the golf course, a newly refurbished kitchen with Nef appliances, two double bedrooms each with its own ensuite, a third bedroom and an additional Cloakroom WC. Conveniently situated for access to M4 motorway.

This property is offered with no onward chain.

### PROPERTY SPECIALIST

**Mrs Ruby Ledley**

[ruby@jeffreygross.co.uk](mailto:ruby@jeffreygross.co.uk)

02920499680


Valuer









Energy Efficiency Rating		
	Current	Potential
Very energy efficient - lower running costs		
(92 plus) <b>A</b>		
(81-91) <b>B</b>		
(69-80) <b>C</b>		
(55-68) <b>D</b>		
(39-54) <b>E</b>		
(21-38) <b>F</b>		
(1-20) <b>G</b>		
Not energy efficient - higher running costs		
<b>England &amp; Wales</b>	EU Directive 2002/91/EC 	

































**HALLWAY**

**WC CLOAKROOM**

**BEDROOM 1**

3.68m x 3.25m (12'1 x 10'8)

**EN-SUITE**

**LIVING ROOM**

6.17m x 5.05m (20'3 x 16'7)

**BEDROOM 2**

3.56m x 3.07m (11'8 x 10'1 )

**EN-SUITE**

**KITCHEN**

3.96m x 2.62m (13 x 8'7)

**BEDROOM 3**

3.48m x 2.46m (11'5 x 8'1)

**DINING AREA**

7.01m x 3.56m (23 x 11'8)

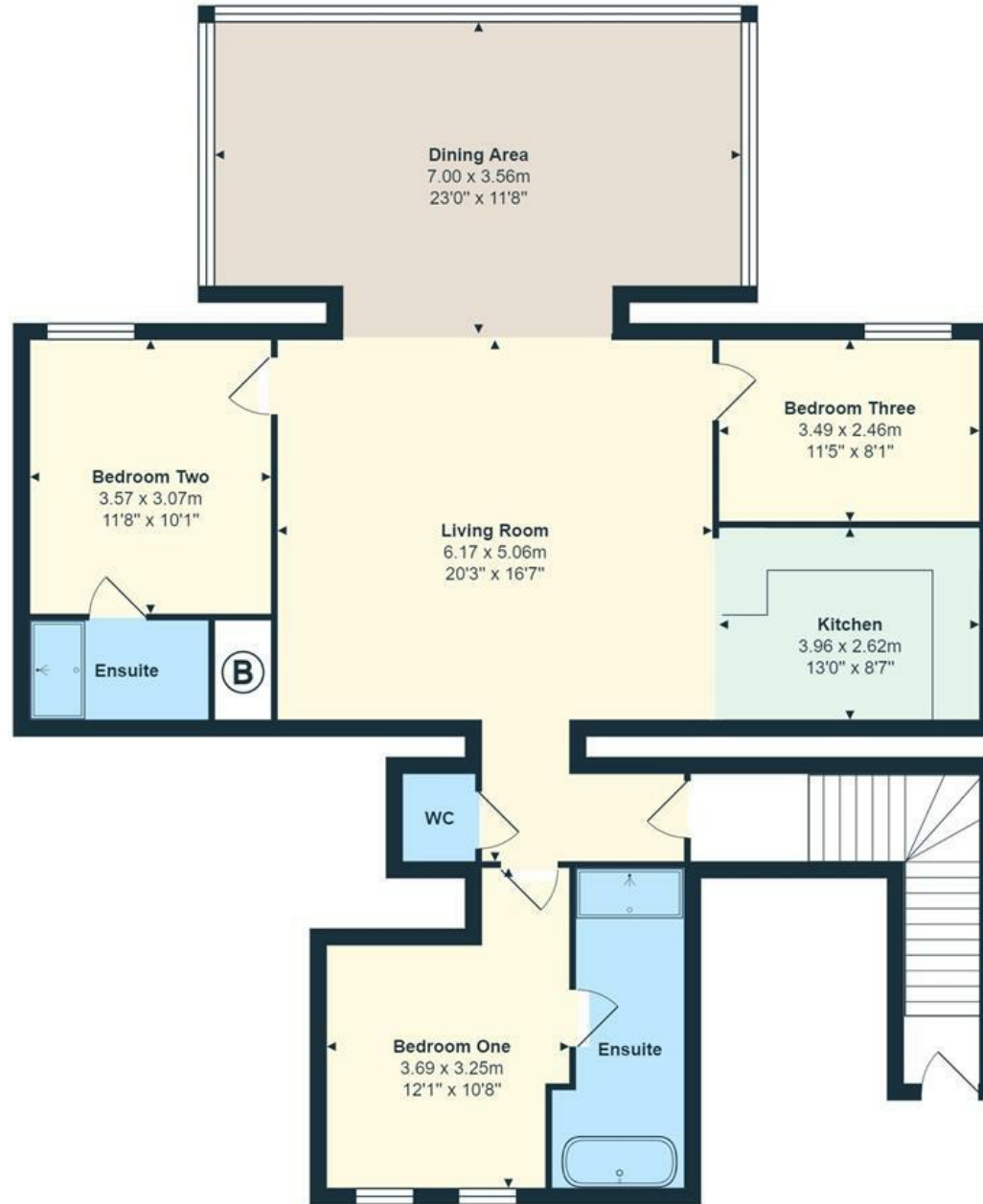


”

Comments by Mrs Ruby Ledley

”







[www.jeffreyross.co.uk](http://www.jeffreyross.co.uk)

Jeffrey Ross