

CARDIFF'S HOME FOR  
STYLISH SALES  
& LETTINGS

JeffreyRoss



LIONEL ROAD  
VICTORIA PARK



# LIONEL ROAD

VICTORIA PARK, CF5 1HN - £1,400 PCM  
PCM

3 bedroom(s) 1 bathroom(s) 1143.00 sq ft

We are delighted to offer this substantial and extremely spacious 3-bedroom, end terrace home within the sought after area of Victoria Park. Located on the corner of Lionel Road (at the Forrest Road junction) the property offers a host of benefits to include a brilliant living space, newly fitted kitchen and low-maintenance rear garden with side gate entrance. On the first-floor are three bedrooms, two spacious doubles (both with excellent fitted wardrobes) and a third, single bedroom/study. A family bathroom is also located on the first-floor complete with bathtub and shower over. The loft has been converted to make a loft-room which would work well as an additional reception room or study area. Available furnished. A lovely property.

GAS CENTRAL HEATING. STREET PARKING. FLOOR PLAN AVAILABLE.

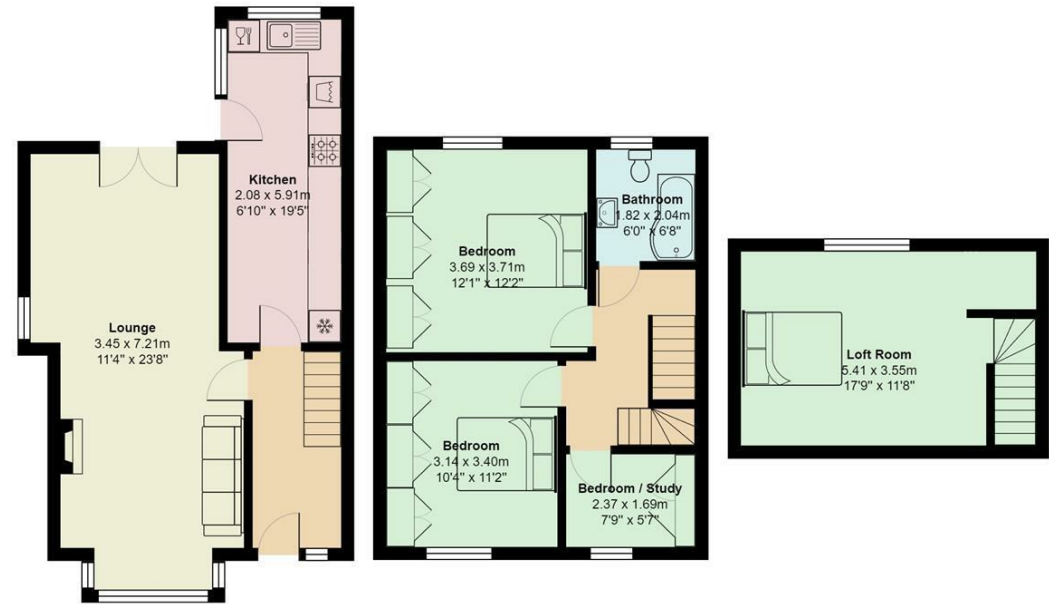
EPC RATING of D  
COUNCIL TAX BAND of D

A holding fee of one weeks' rent will be payable to secure the property. This will be deducted from the final balance payable upon moving into the property, subject to a successful application. JeffreyRoss Limited reserves the right to retain this payment should the applicant have provided false or misleading information at the time of applying for the Tenancy or failed to take reasonable steps to enter into the tenancy agreement.



Energy Efficiency Rating		
	Current	Potential
<i>Very energy efficient - lower running costs</i>		
(92 plus) <b>A</b>		<b>85</b>
(81-91) <b>B</b>		
(69-80) <b>C</b>		
(55-68) <b>D</b>	<b>64</b>	
(39-54) <b>E</b>		
(21-38) <b>F</b>		
(1-20) <b>G</b>		
<i>Not energy efficient - higher running costs</i>		
<b>England &amp; Wales</b>	EU Directive 2002/91/EC	

Lionel Road, Victoria Park



Total Area: 106.2 m<sup>2</sup> ... 1143 ft<sup>2</sup>  
All measurements are approximate and for display purposes only

PROPERTY SPECIALIST  
Ms Jodie Price  
jodie.price@jeffreycross.co.uk