

CARDIFF'S HOME FOR  
STYLISH SALES  
& LETTINGS

JeffreyRoss



LOWER CATHEDRAL ROAD  
RIVERSIDE

# LOWER CATHEDRAL ROAD

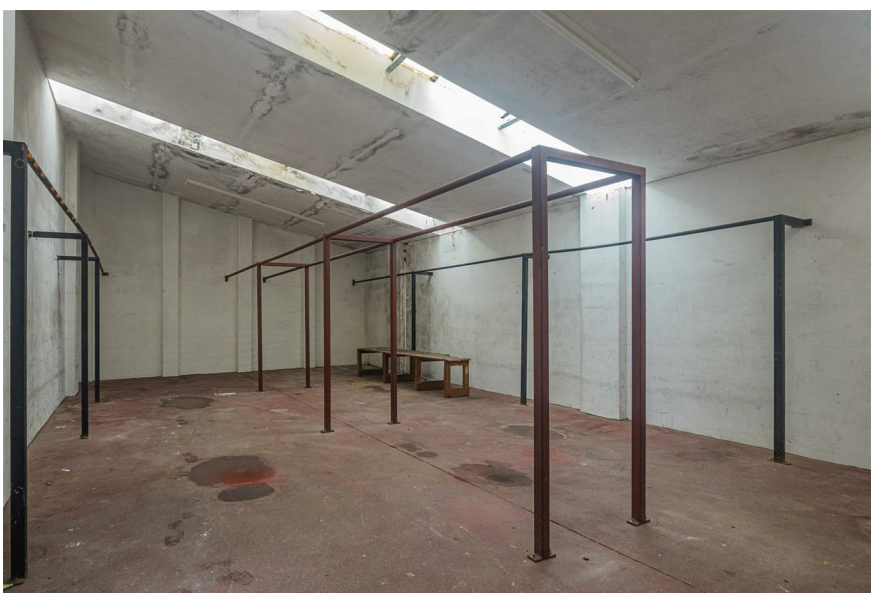
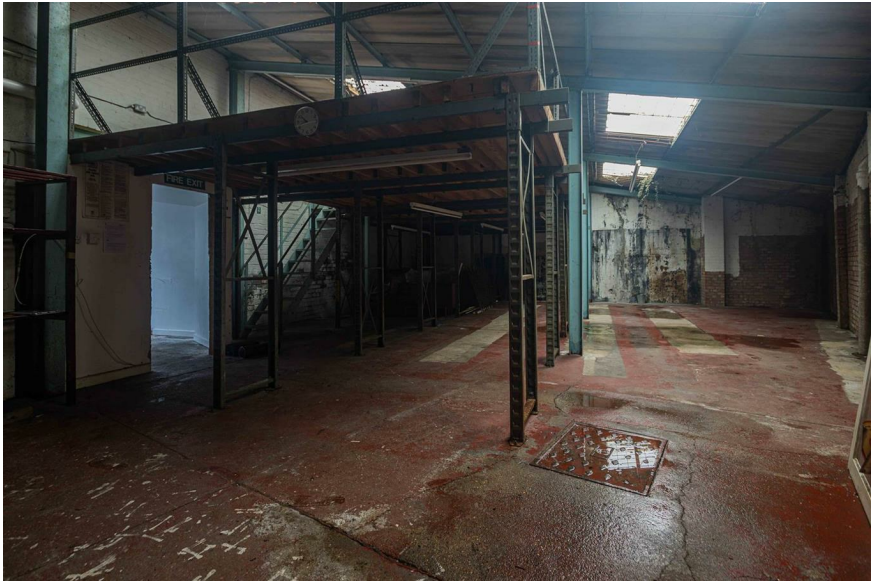
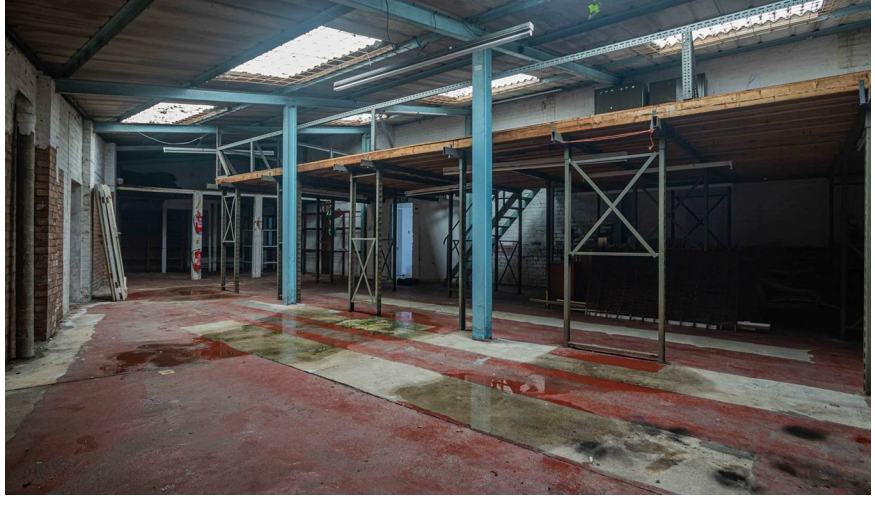
RIVERSIDE, CF11 6LU - £1,250 PCM  
PCM

0 bedroom(s) 1 bathroom(s) sq ft

\*\*\*12 MONTH INTIAL LET AVAILABLE\*\*\* A fantastic opportunity to acquire an extremely spacious commercial unit in a prime location. Located on Lower Cathedral Road the property is just a 5-minute walk to the City Centre.

The proeprty offers great space and can be adapted to multi-usage subject to the necessary planning works.

An additional office unit is available subject to negotiation.



Energy Efficiency Rating		
	Current	Potential
<i>Very energy efficient - lower running costs</i>		
(92 plus) <b>A</b>		
(81-91) <b>B</b>		
(69-80) <b>C</b>		
(55-68) <b>D</b>		
(39-54) <b>E</b>		
(21-38) <b>F</b>		
(1-20) <b>G</b>		
<i>Not energy efficient - higher running costs</i>		
<b>England &amp; Wales</b>	EU Directive 2002/91/EC	

## PROPERTY SPECIALIST

Jon Hooper-Nash  
jon@jeffreycross.co.uk



Director

