



LOWER CATHEDRAL ROAD
RIVERSIDE





LOWER CATHEDRAL ROAD

RIVERSIDE, CF11 6LU - £1,250 PCM



0 bedroom(s)



1 bathroom(s)



sq ft

12 MONTH INTIAL LET AVAILABLE A fantastic opportunity to acquire an extremely spacious commercial unit in a prime location. Located on Lower Cathedral Road the property is just a 5-minute walk to the City Centre.

The proeprty offers great space and can be adapted to multi-usage subject to the necessary planning works.

An additional office unit is available subject to negotiation.

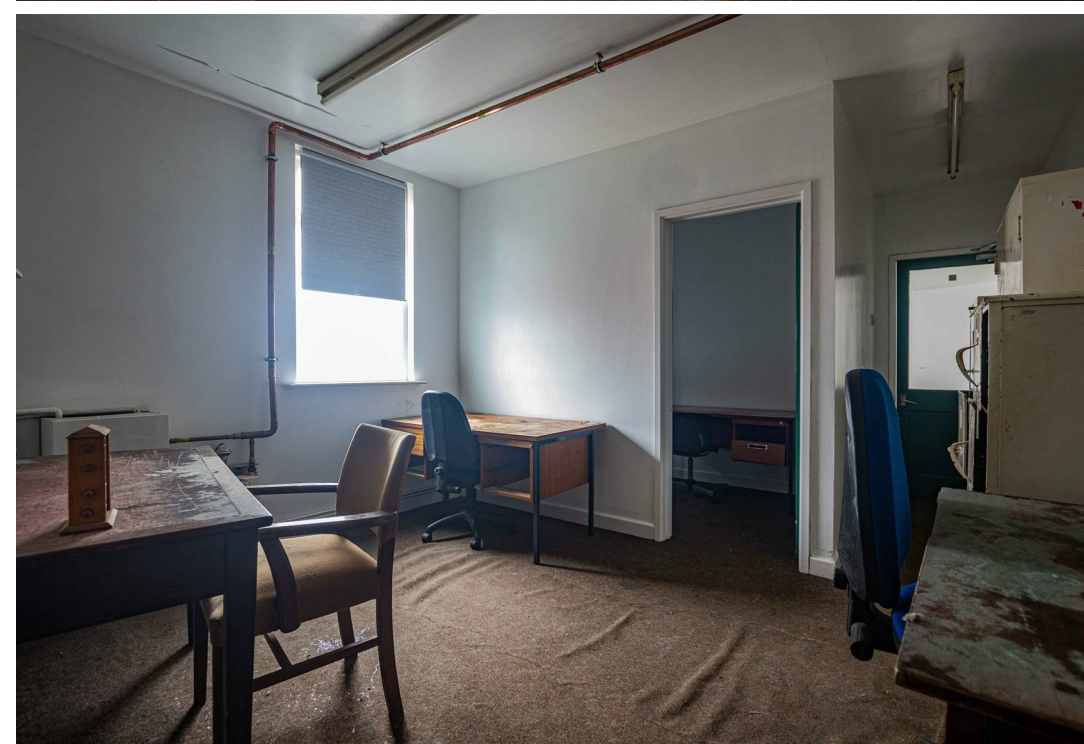
PROPERTY SPECIALIST


Jon Hooper-Nash
jon@jeffreygross.co.uk

Director







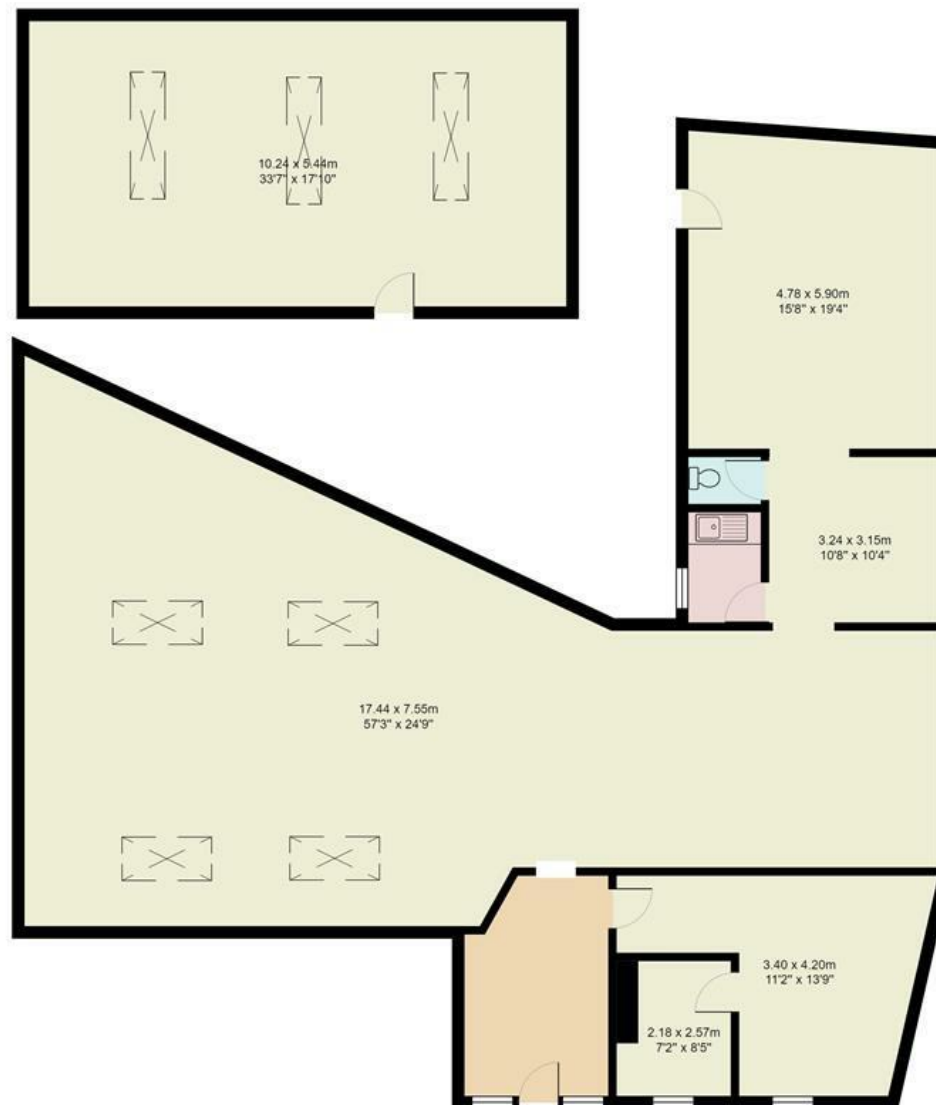
Energy Efficiency Rating		
	Current	Potential
Very energy efficient - lower running costs		
(92 plus) A		
(81-91) B		
(69-80) C		
(55-68) D		
(39-54) E		
(21-38) F		
(1-20) G		
Not energy efficient - higher running costs		
England & Wales	EU Directive 2002/91/EC 	

”

Comments by Jon Hooper-Nash

”

Lower Cathedral Road, Riverside



Total Area: 255.4 m² ... 2749 ft²

All measurements are approximate and for display purposes only

www.jeffreyross.co.uk

Jeffrey Ross