

CARDIFF'S HOME FOR
STYLISH SALES
& LETTINGS


JeffreyRoss

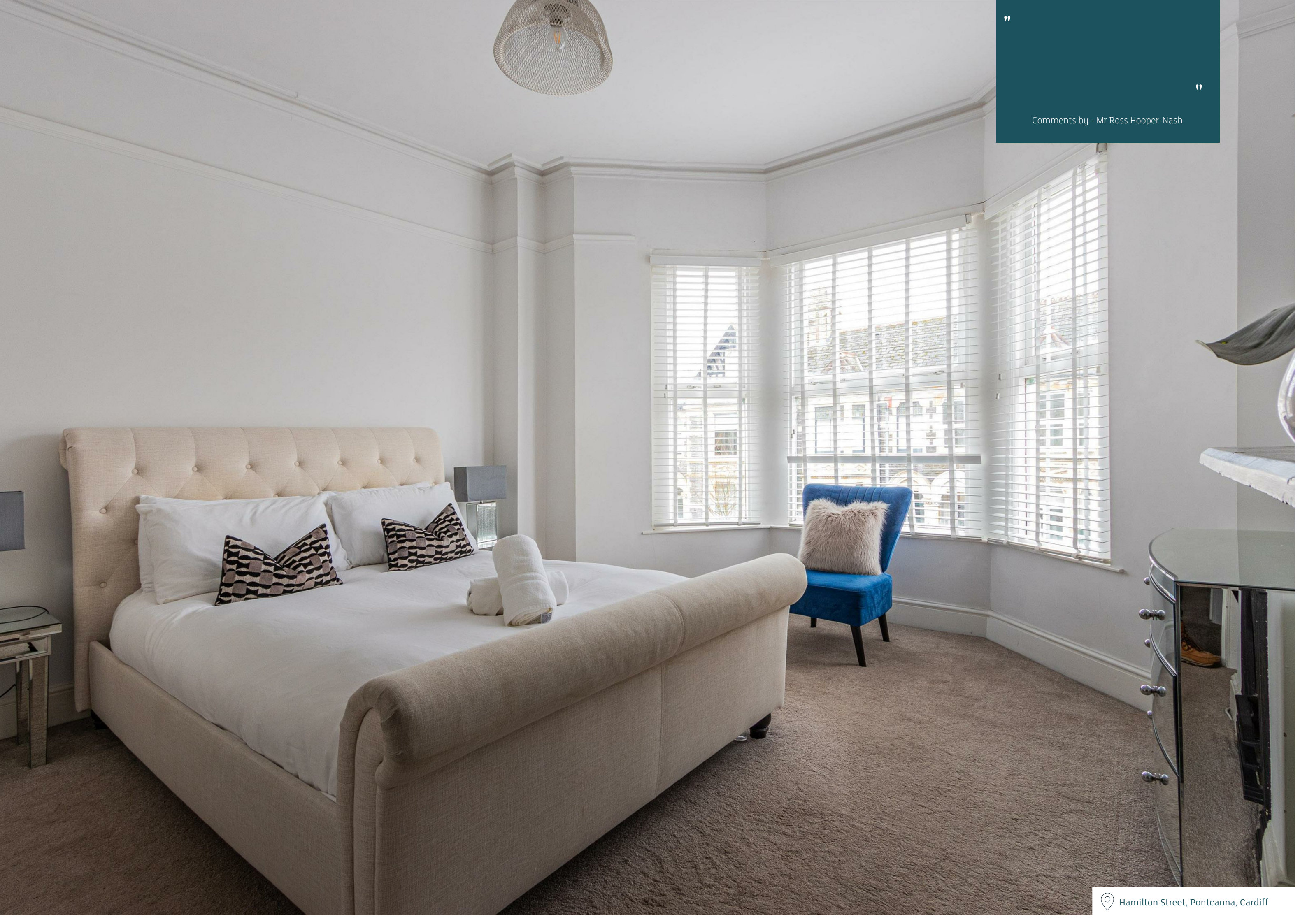


HAMILTON STREET
PONTCANNA



- HALLWAY**
- LOUNGE**
4.37m x 3.94m (14'4 x 12'11)
- KITCHEN/DINER**
3.96m x 3.30m (13' x 10'10)
- BEDROOM ONE**
4.39m x 3.96m (14'5 x 13)
- BEDROOM TWO**
3.33m x 2.72m (10'11 x 8'11)
- BATHROOM**
- GARDEN**

Energy Efficiency Rating		
	Current	Potential
<i>Very energy efficient - lower running costs</i>		
(92 plus) A		
(81-91) B		
(69-80) C		
(55-68) D		
(39-54) E		
(21-38) F		
(1-20) G		
<i>Not energy efficient - higher running costs</i>		
England & Wales	EU Directive 2002/91/EC 	



Comments by - Mr Ross Hooper-Nash



HAMILTON STREET

PONTCANNA, CF11 9BP - £425,000

 2 bedrooms
  1 bathroom(s)
  759.00 sq ft

A charming and unique two bedroom mid terrace situated on this popular Pontcanna road. The accommodation comprises of a bay fronted lounge with feature fireplace, fully equipped kitchen diner with understairs storage, two doubled bedrooms, contemporary shower room and enclosed courtyard garden. The property is offered for sale with no ongoing chain. Freehold.

PROPERTY SPECIALIST

Mr Ross Hooper-Nash
 ross@jeffreycross.co.uk
 02920 397887
 Director



Hamilton St, Pontcanna, CRF

Main Building: Total Interior Area 759.91 sq ft



0 3 6 ft



White regions are excluded from total floor area in iGUIDE floor plans. All room dimensions and floor areas must be considered approximate and are subject to independent verification.

