



**BENJAMIN
STEVENS.**
estate agents



2 Pasteur Close, London, NW9 5HQ

Asking Price £190,000

A Chain Free Ground Floor Studio Apartment for sale in the heart of Colindale!

This property comprises a spacious bedroom/reception room with a kitchen and a separate family bathroom.

The features of this property are it's allocated parking, communal gardens and is walking distance to local transport links/shopping.

Call Benjamin Stevens sole agents to book in a viewing!

Exterior



Bathroom



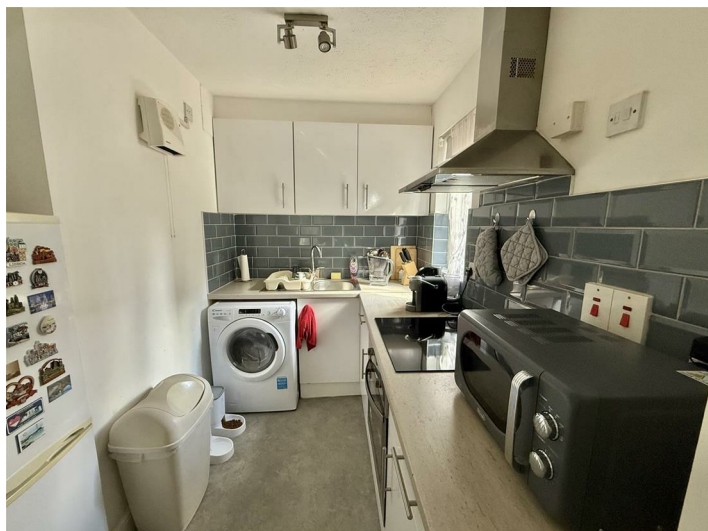
Studio Room 15'7" x 13'3" (4.75 x 4.04)



Communal Gardens



Kitchen 9'3" x 7'8" (2.82 x 2.34)

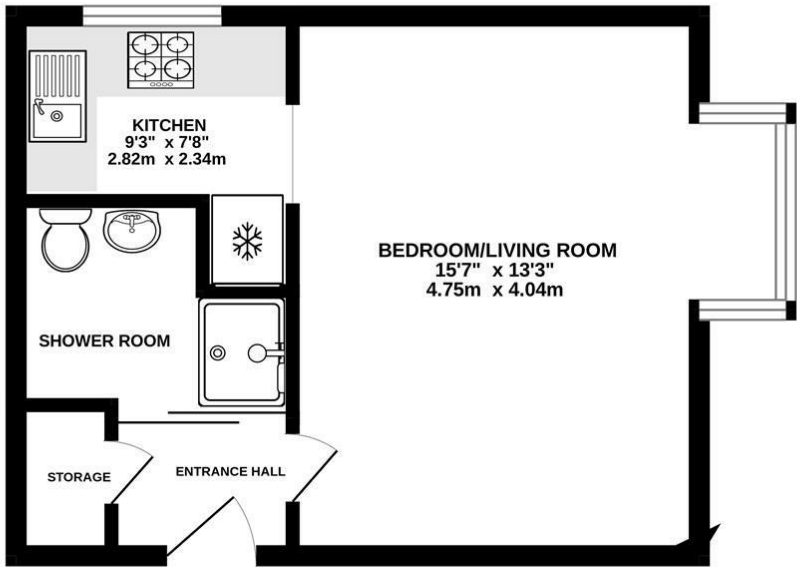


Tenure

Lease- 88 years remaining
Ground Rent- £0
Service Charge - £1,506.82pa
Council Tax Band- B (Barnet)

Floor Plan

GROUND FLOOR
303 sq.ft. (28.1 sq.m.) approx.

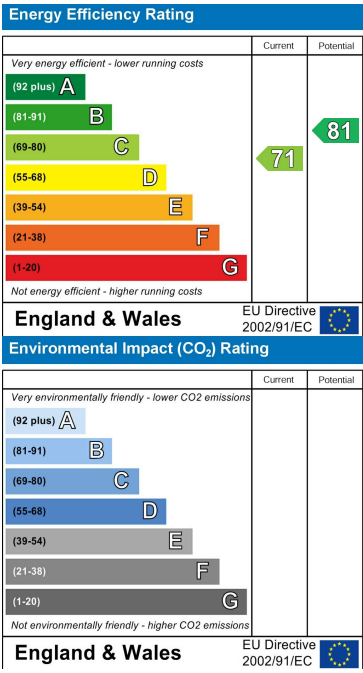


STUDIO FLAT
TOTAL FLOOR AREA: 303 sq.ft. (28.1 sq.m.) approx.
Whilst every attempt has been made to ensure the accuracy of the floorplan contained here, measurements of doors, windows, rooms and any other items are approximate and no responsibility is taken for any error, omission or mis-statement. This plan is for illustrative purposes only and should be used as such by any prospective purchaser. The services, systems and appliances shown have not been tested and no guarantee as to their operability or efficiency can be given.
Made with Metropix ©2025

Area Map



Energy Efficiency Graph



These particulars, whilst believed to be accurate are set out as a general outline only for guidance and do not constitute any part of an offer or contract. Intending purchasers should not rely on them as statements of representation of fact, but must satisfy themselves by inspection or otherwise as to their accuracy. No person in this firms employment has the authority to make or give any representation or warranty in respect of the property.



Edgware Office- 194 Station Road, Edgware, HA8 7AT. Tel: 020 8958 1118
Bushey Heath Office- 59 High Road, Bushey, WD23 1EE. Tel: 020 8950 7777
www.benjaminstevens.co.uk