

44 Guardhouse Way, London, NW7 1FX

Offers In Excess Of £1,000,000

Beautifully presented modern style three bedroom three bathroom town house, with accommodation over three floors, set within a popular and sought after purpose built development, built only within the last few years. The property offers superbly appointed accommodation throughout, including a stylish kitchen/diner with patio doors leading out onto the rear garden.

The property is very conveniently located within easy access of Mill Hill East (0.4 miles), West Finchley (1.0 mile) and Woodside Park (1.1 miles) stations, all providing superb links into Central London, and close to a variety of shops, eateries and amenities. There are a number of pleasant green spaces in the area, along with well-respected local schools, making this an ideal location for this fabulous family home.

Viewings are highly recommended to fully appreciate the overall quality of the accommodation on offer.

Please note the owner of the property works for Benjamin Stevens.

Exterior



Reception



Kitchen



Reception Room



Breakfast Area



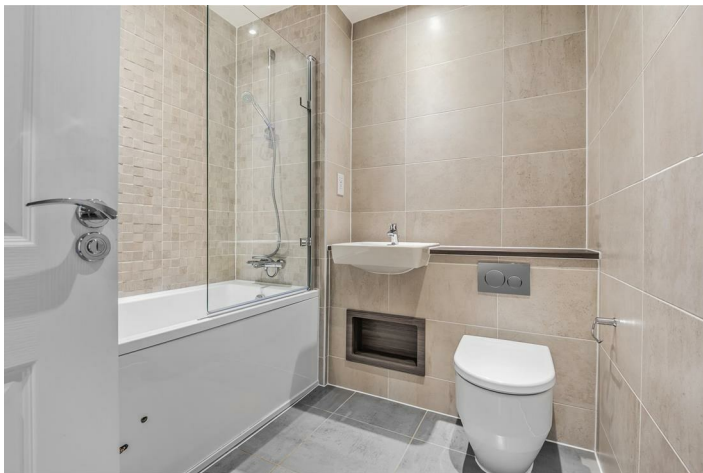
Dining Area



Bedroom One



Bathroom



Bedroom Two



Balcony



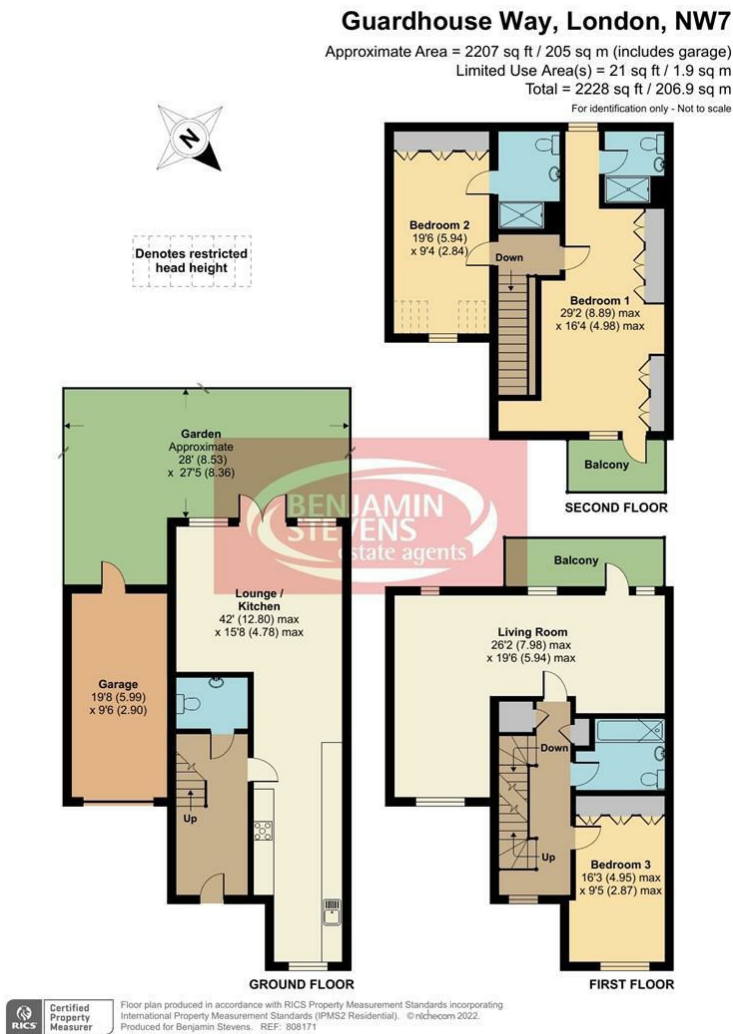
Bathroom Three



Tenure

Freehold
Estate Charge- £600PA
Council Tax Band - G (Barnet)

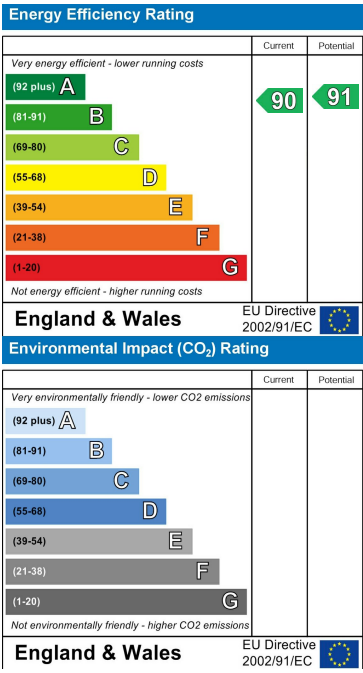
Floor Plan



Area Map



Energy Efficiency Graph



These particulars, whilst believed to be accurate are set out as a general outline only for guidance and do not constitute any part of an offer or contract. Intending purchasers should not rely on them as statements of representation of fact, but must satisfy themselves by inspection or otherwise as to their accuracy. No person in this firms employment has the authority to make or give any representation or warranty in respect of the property.

