

**89 Highview Avenue, Edgware, HA8 9TY**

**Offers In Excess Of £750,000**

A three bedroom detached house, located on Highview Avenue in Edgware within close proximity to local shops, transport links and places of worship.

Downstairs accommodation comprises a reception and dining area and a separate kitchen. Upstairs there are three bedrooms and family bathroom.

The main features of this property is it has a spacious garden, parking for cars to the drive and a garage.

Call Benjamin Stevens to arrange a viewing!



**Exterior**



**Reception Area 15'3" x 13'10" (4.67 x 4.24)**



**Hallway**



**Dining Area 12'0" x 11'6" (3.68 x 3.51)**



**Kitchen 9'6" x 8'9" (2.90 x 2.69)**



**Bedroom One 15'5" x 12'4" (4.72 x 3.78)**





**Bedroom Two 13'1" x 12'4" (3.99 x 3.78)**



**Garden**



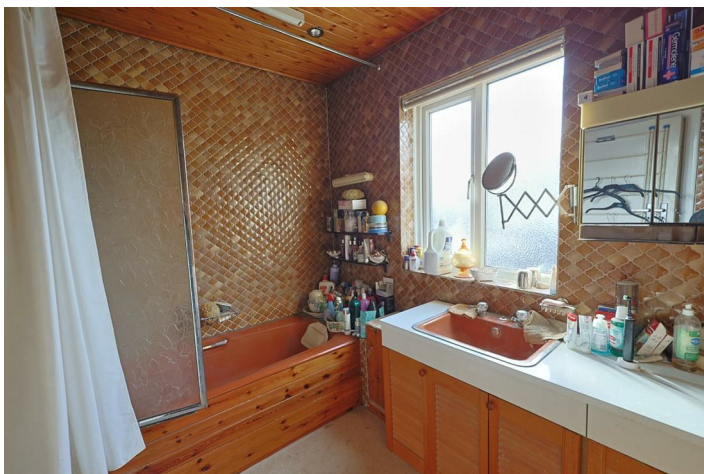
**Bedroom Three 8'11" x 8'7" (2.72 x 2.64 )**



**Rear Aspect**



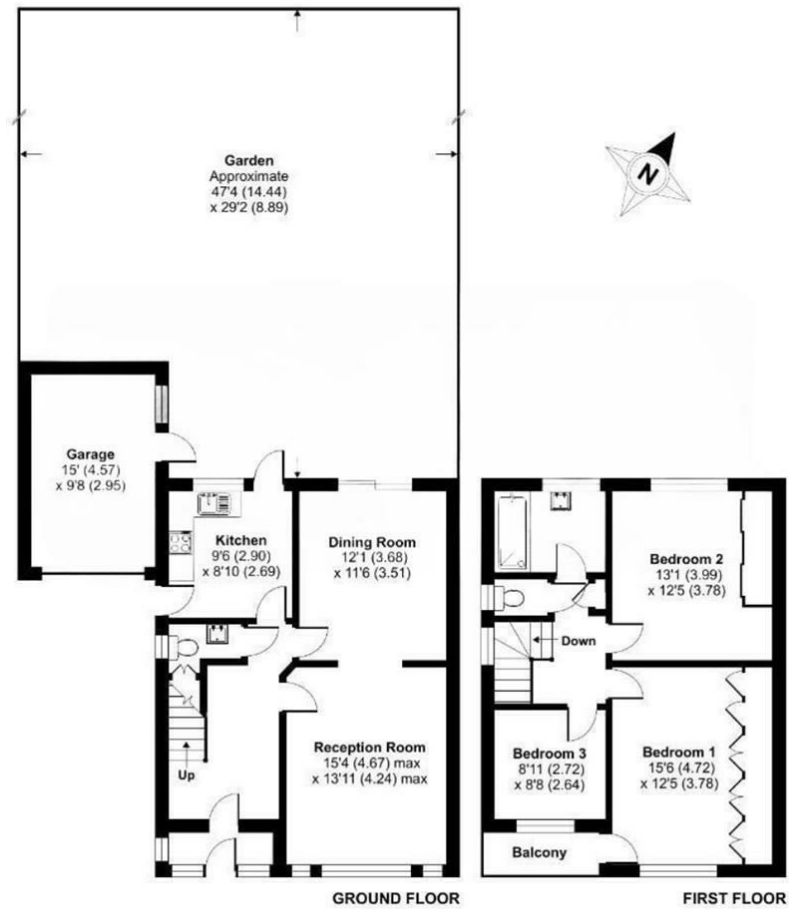
**Family Bathroom**



Floor Plan

Highview Avenue, Edgware, HA8

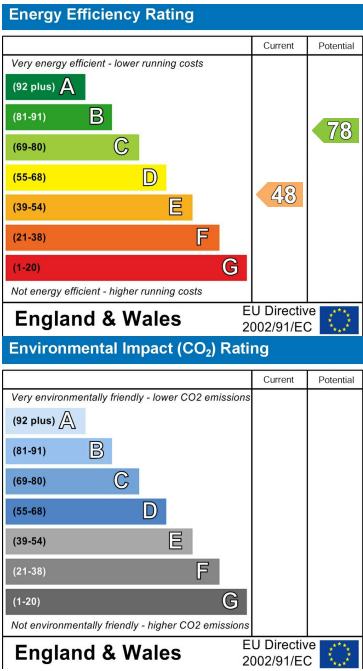
Approximate Area = 1224 sq ft / 113.7 sq m  
Garage = 145 sq ft / 13.4 sq m  
Total = 1369 sq ft / 127.1 sq m  
For identification only - Not to scale



Area Map



Energy Efficiency Graph



These particulars, whilst believed to be accurate are set out as a general outline only for guidance and do not constitute any part of an offer or contract. Intending purchasers should not rely on them as statements of representation of fact, but must satisfy themselves by inspection or otherwise as to their accuracy. No person in this firms employment has the authority to make or give any representation or warranty in respect of the property.



Edgware Office- 194 Station Road, Edgware, HA8 7AT. Tel: 020 8958 1118  
Bushey Heath Office- 59 High Road, Bushey, WD23 1EE. Tel: 020 8950 7777  
www.benjaminstevens.co.uk