



19 Stanmore Hall Wood Lane, Stanmore, HA7 4JY

Asking Price £1,500,000

A three-bedroom, three-bathroom first floor apartment in the exclusive Stanmore Hall development, located on the northern slope of Stanmore Hill.

The stately Gothic mansion, originally owned by the Duke of Chandos, was fully reconstructed in the 1990s and now offers luxurious amenities, including an indoor leisure complex with a heated swimming pool, Jacuzzi, and gym.

The property is set in two acres of landscaped grounds, with a concierge service for security. The apartment, covering 2,156 sq ft, features a grand entrance hall, spacious living areas, a kitchen/breakfast room, and a principal bedroom with en suite.

Call Benjamin Stevens for a viewing!

Exterior



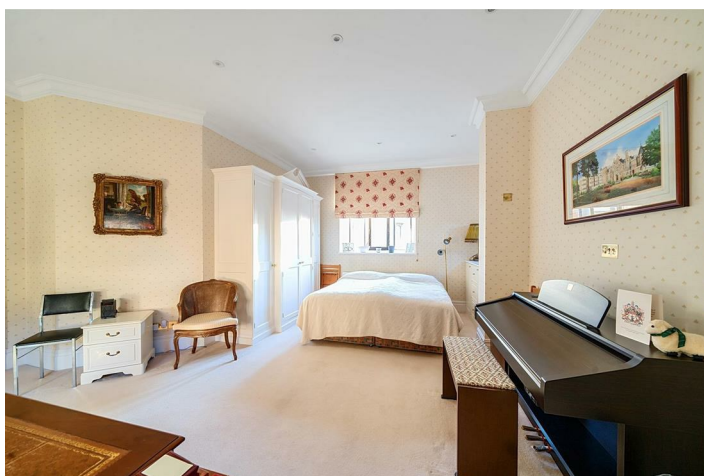
Kitchen 15'9" x 14'9" (4.81 x 4.51)



Hallway



Bedroom One 24'0" x 21'8" (7.34 x 6.61)



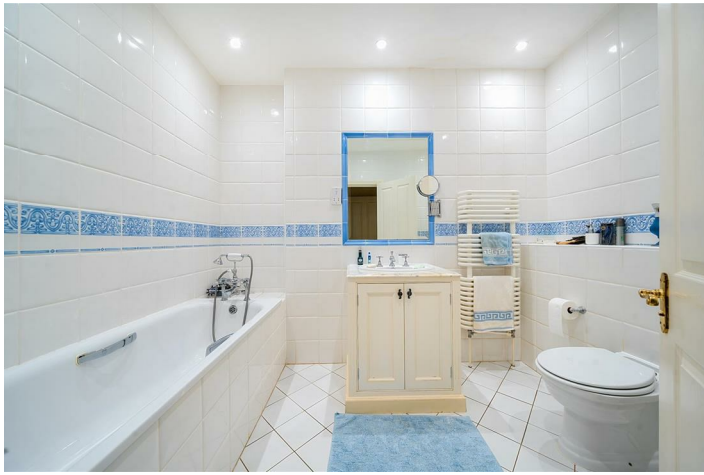
Reception 24'4" x 17'4" (7.42 x 5.29)



Bedroom Two 17'0" x 14'11" (5.20 x 4.55)



Family Bathroom 10'10" x 7'4" (3.31 x 2.24)



Guest Toilet



Bedroom Three 15'2" x 11'0" (4.64 x 3.37)



Dressing Area



En-Suite



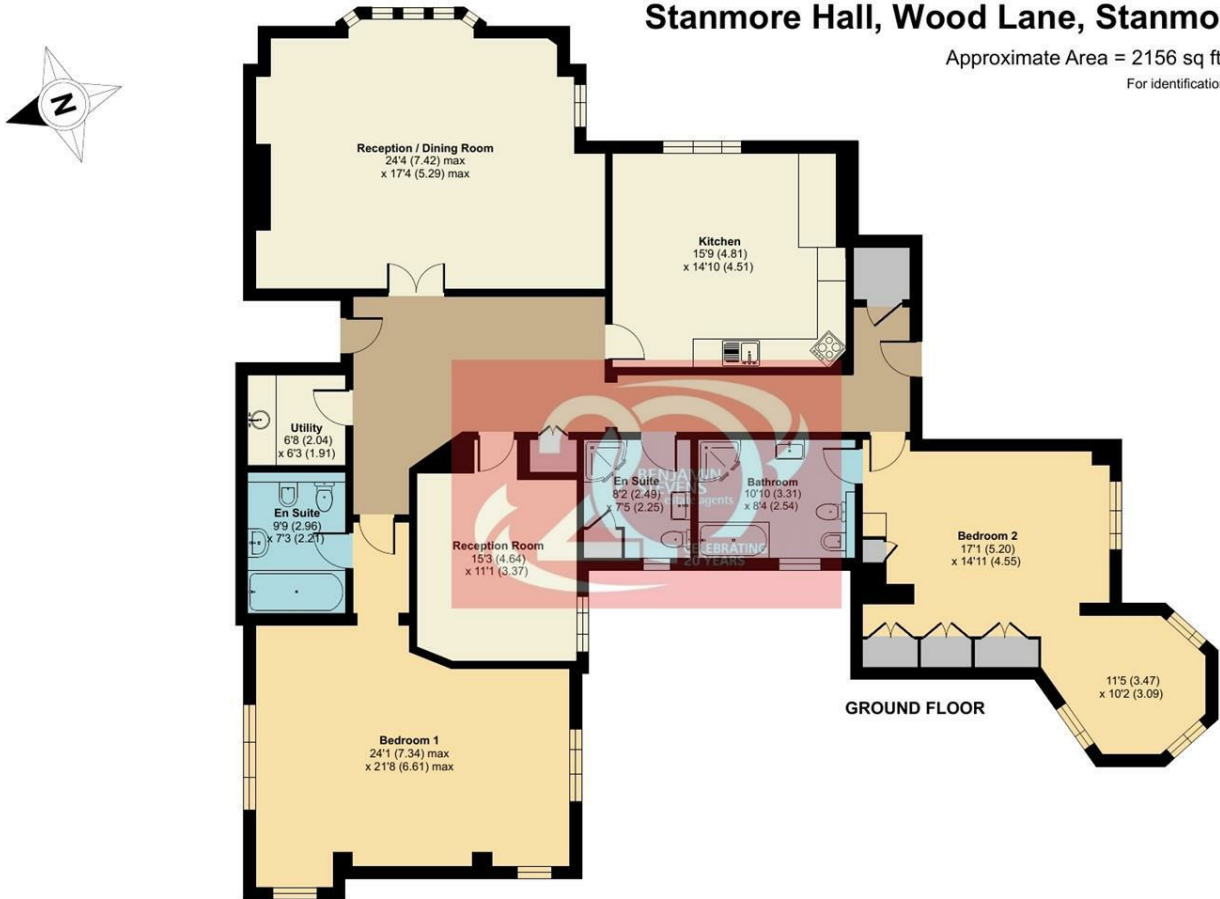
Rear Aspect



Floor Plan

Stanmore Hall, Wood Lane, Stanmore, HA7

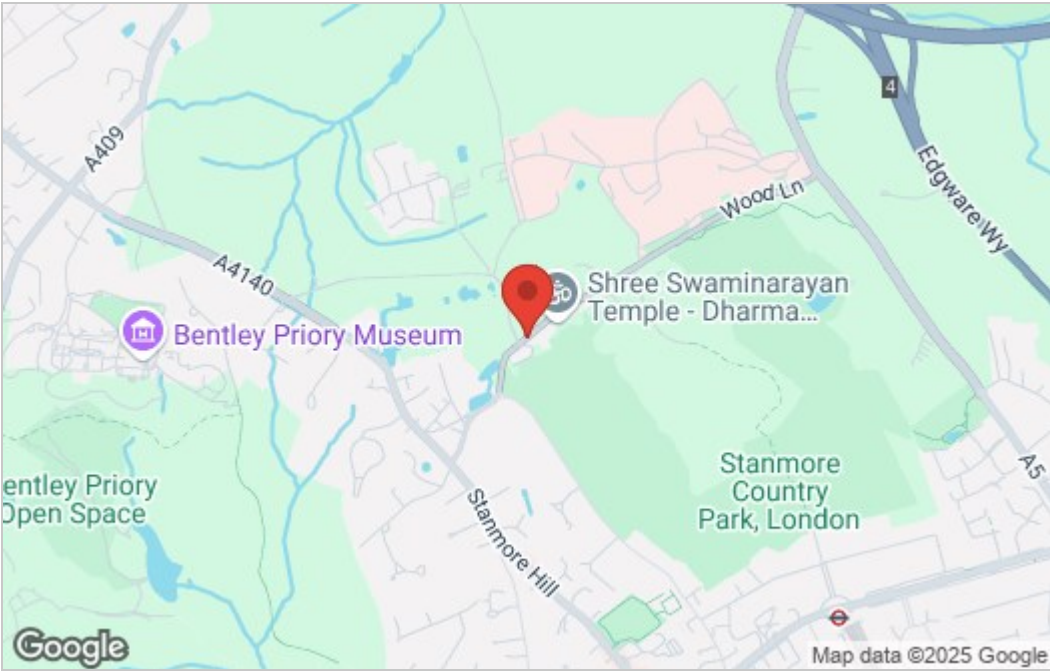
Approximate Area = 2156 sq ft / 200.2 sq m
For identification only - Not to scale



Floor plan produced in accordance with RICS Property Measurement 2nd Edition, incorporating International Property Measurement Standards (IPMS2 Residential). © nitchecom 2025. Produced for Benjamin Stevens. REF: 1230520

Area Map

Energy Efficiency Graph



These particulars, whilst believed to be accurate are set out as a general outline only for guidance and do not constitute any part of an offer or contract. Intending purchasers should not rely on them as statements of representation of fact, but must satisfy themselves by inspection or otherwise as to their accuracy. No person in this firms employment has the authority to make or give any representation or warranty in respect of the property.



Edgware Office- 194 Station Road, Edgware, HA8 7AT. Tel: 020 8958 1118
Bushey Heath Office- 59 High Road, Bushey, WD23 1EE. Tel: 020 8950 7777
www.benjaminstevens.co.uk