

5 Deans Way, Edgware, HA8 9NG

Offers In The Region Of £535,000

A Chain Free three bedroom family home in the heart of Edgware.

Downstairs the property comprises of two separate reception rooms/a dining area and a separate kitchen with direct access to the garden.

Upstairs are three bedrooms with a separate toilet and a family shower room.

The main features of this property is its off street parking, side access and potential to extend S.T.P.P.

This property is close to local transport links/amenities and is only 0.7 Miles to Edgware Tube Station.

Call Benjamin Stevens Sole Agents to book in a viewing!

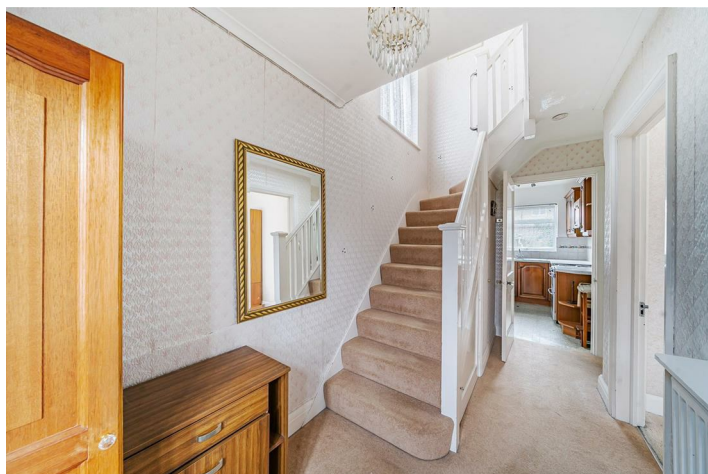
Exterior



Dining Room 13'1" x 11'8" (4.01 x 3.58)



Hallway



Kitchen 8'3" x 7'4" (2.54 x 2.26)



Reception 12'0" x 10'5" (3.66 x 3.20)



Bedroom One 13'3" x 12'5" (4.06 x 3.8)



Bedroom Two 11'6" x 10'11" (3.51 x 3.33)



Garden



Bedroom Three 7'8" x 7'3" (2.34 x 2.21)



Rear Aspect



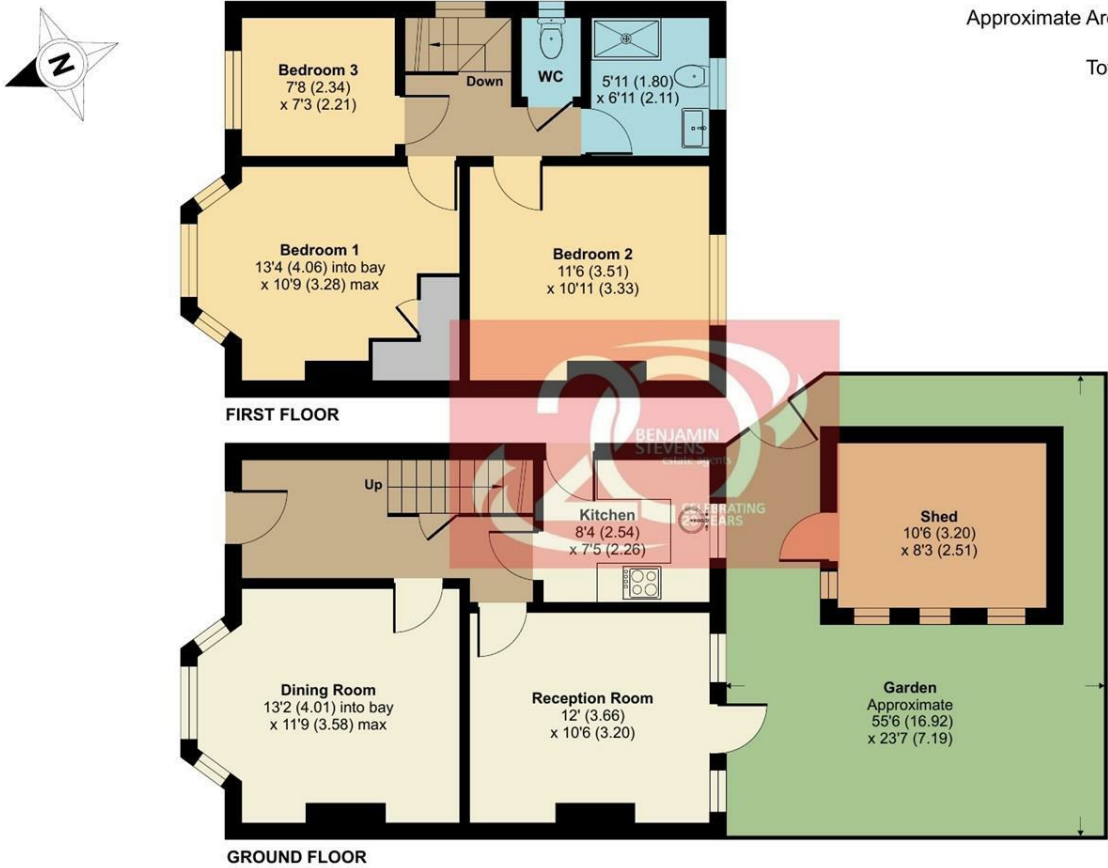
Bathroom



Floor Plan

Deans Way, Edgware, HA8

Approximate Area = 880 sq ft / 81.7 sq m
Shed = 87 sq ft / 8 sq m
Total = 967 sq ft / 89.8 sq m
For identification only - Not to scale

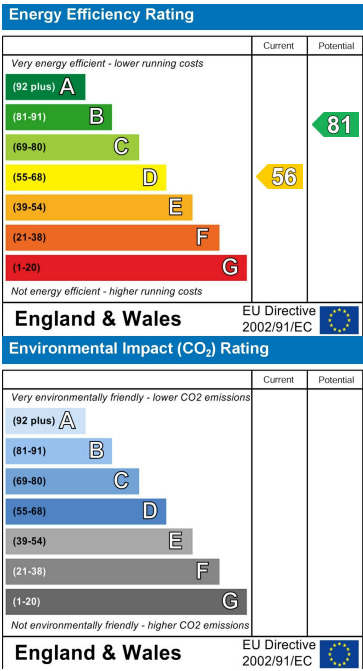


Floor plan produced in accordance with RICS Property Measurement 2nd Edition, Incorporating International Property Measurement Standards (IPMS2 Residential). © nitchcom 2025. Produced for Benjamin Stevens. REF: 1234255

Area Map



Energy Efficiency Graph



These particulars, whilst believed to be accurate are set out as a general outline only for guidance and do not constitute any part of an offer or contract. Intending purchasers should not rely on them as statements of representation of fact, but must satisfy themselves by inspection or otherwise as to their accuracy. No person in this firms employment has the authority to make or give any representation or warranty in respect of the property.



Edgware Office- 194 Station Road, Edgware, HA8 7AT. Tel: 020 8958 1118
Bushey Heath Office- 59 High Road, Bushey, WD23 1EE. Tel: 020 8950 7777
www.benjaminstevens.co.uk