

12A Manor Park Crescent, Edgware, HA8 7NN

Asking Price £325,000

A Two Bedroom ground floor garden maisonette in central Edgware.

Accommodation comprises two bedrooms, reception room, kitchen and a family bathroom.

Features include off street parking, long lease with no ground rent/service charge and a garden.

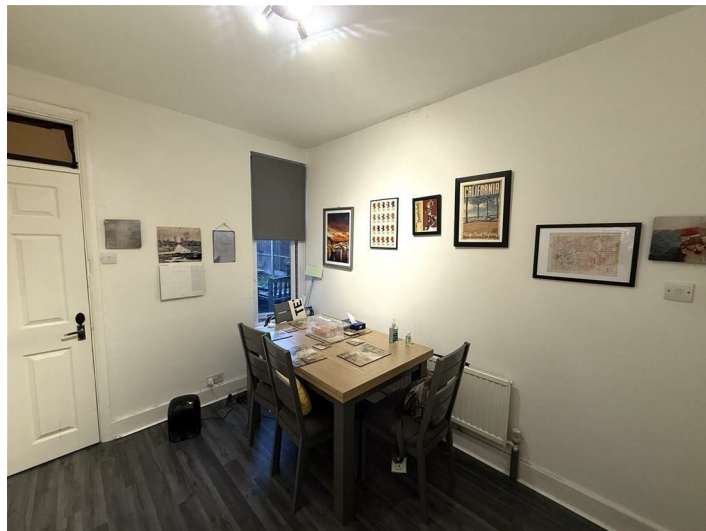
Situated close to transport and shopping at central Edgware.

An early viewing is highly recommended via vendors sole agents Benjamin Stevens.

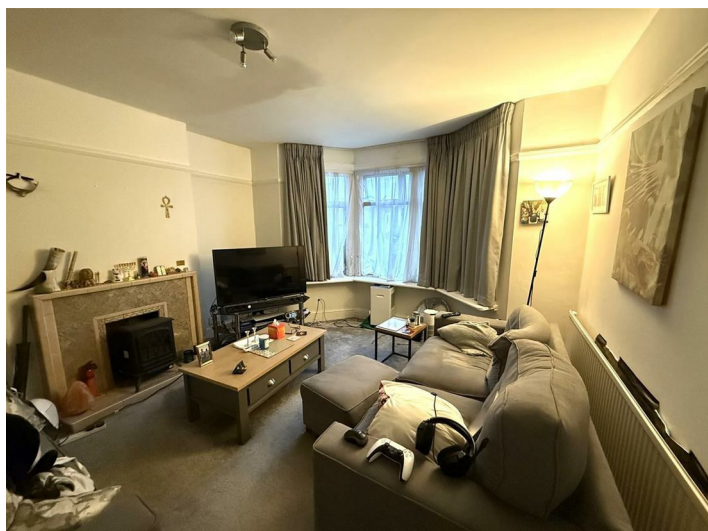
Exterior



Reception 10'5" x 8'7" (3.20 x 2.64)



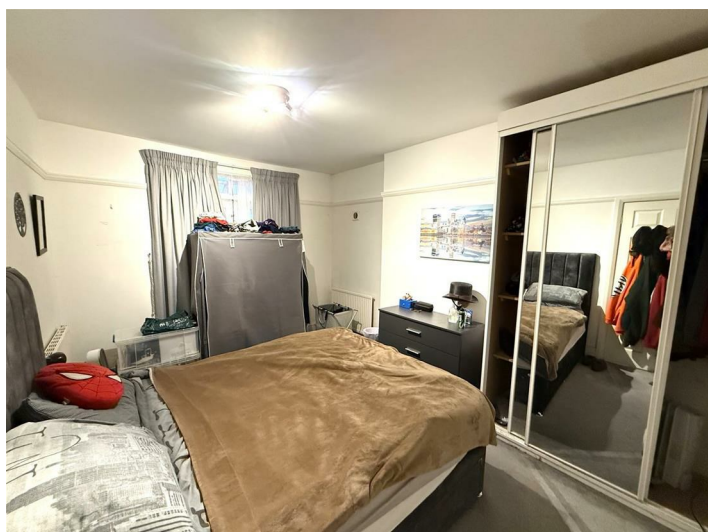
Bedroom One 12'9" x 12'0" (3.89 x 3.68)



Kitchen 9'6" x 6'0" (2.90 x 1.83)



Bedroom Two 13'5" x 9'4" (4.10 x 2.87)



Family Bathroom



Garden

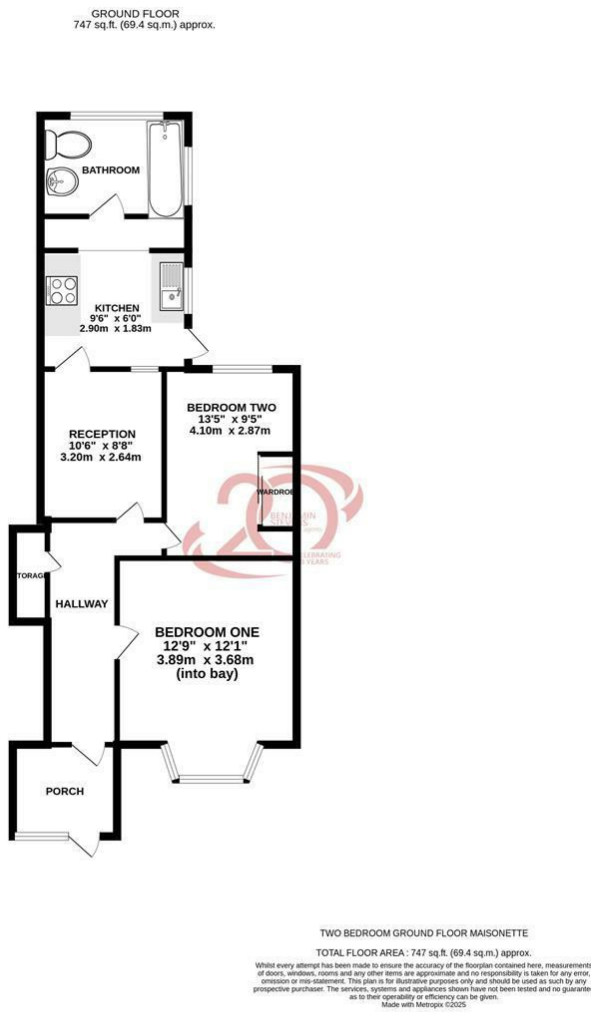


Tenure

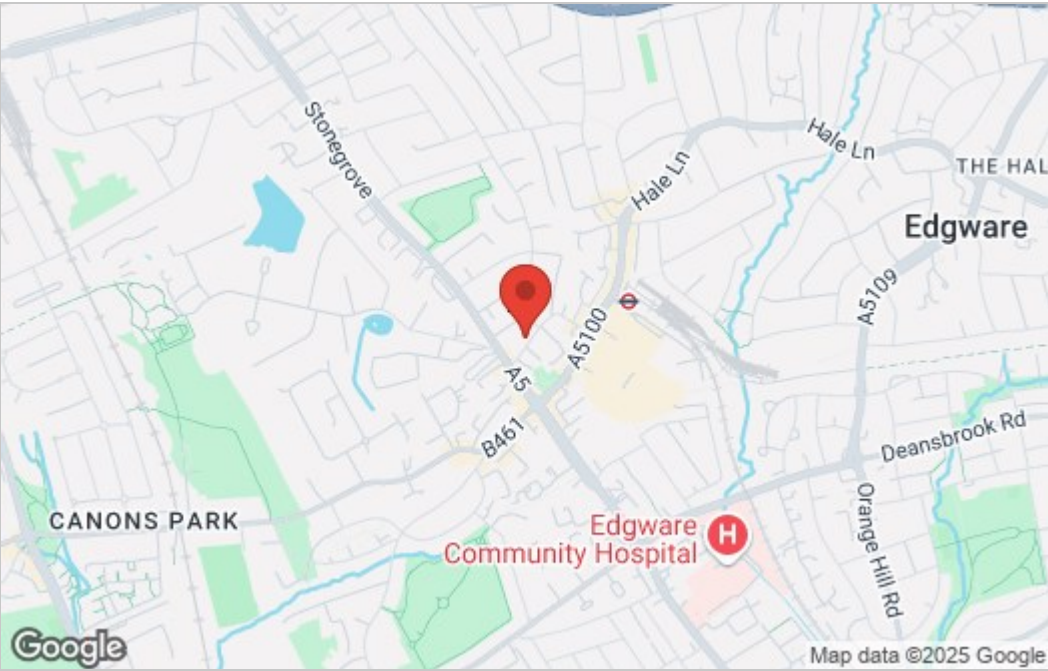
Lease- 140 years remaining

No Ground Rent No Service Charge

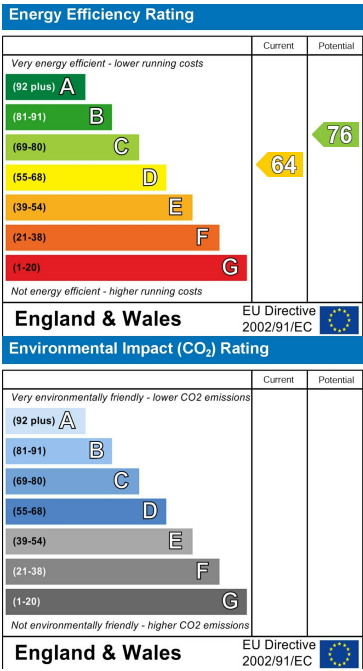
Floor Plan



Area Map



Energy Efficiency Graph



These particulars, whilst believed to be accurate are set out as a general outline only for guidance and do not constitute any part of an offer or contract. Intending purchasers should not rely on them as statements of representation of fact, but must satisfy themselves by inspection or otherwise as to their accuracy. No person in this firms employment has the authority to make or give any representation or warranty in respect of the property.



Edgware Office- 194 Station Road, Edgware, HA8 7AT. Tel: 020 8958 1118
Bushey Heath Office- 59 High Road, Bushey, WD23 1EE. Tel: 020 8950 7777
www.benjaminstevens.co.uk