



Armand Close, Nascot Wood For Sale - £1,350,000 Freehold

www.deykingharia.co.uk

Tel: 01923 831 020

Watford, 129 The Parade, Watford, Hertfordshire, WD17 1NA

Located on a quiet turning off Nascot Wood Road is this extended five-bedroom family home.

Spanning over 2700 sq ft, this imposing property features a downstairs shower room with w/c, spacious dining room, fitted kitchen, utility room and three reception rooms all of which open out to the garden.

On the first floor there are five double bedrooms, the principal benefiting from a walk-in wardrobe and ensuite shower room and finally, the family bathroom.

Further benefit includes an integral garage, large outbuilding and store with power, off street parking for several cars and scope to further extend subject to planning consent.

We loved the quiet, secluded rear garden which overlooks protected woods. The large patio, beautiful handcrafted pavilion and stunning views create a tranquil space and haven for local wildlife.

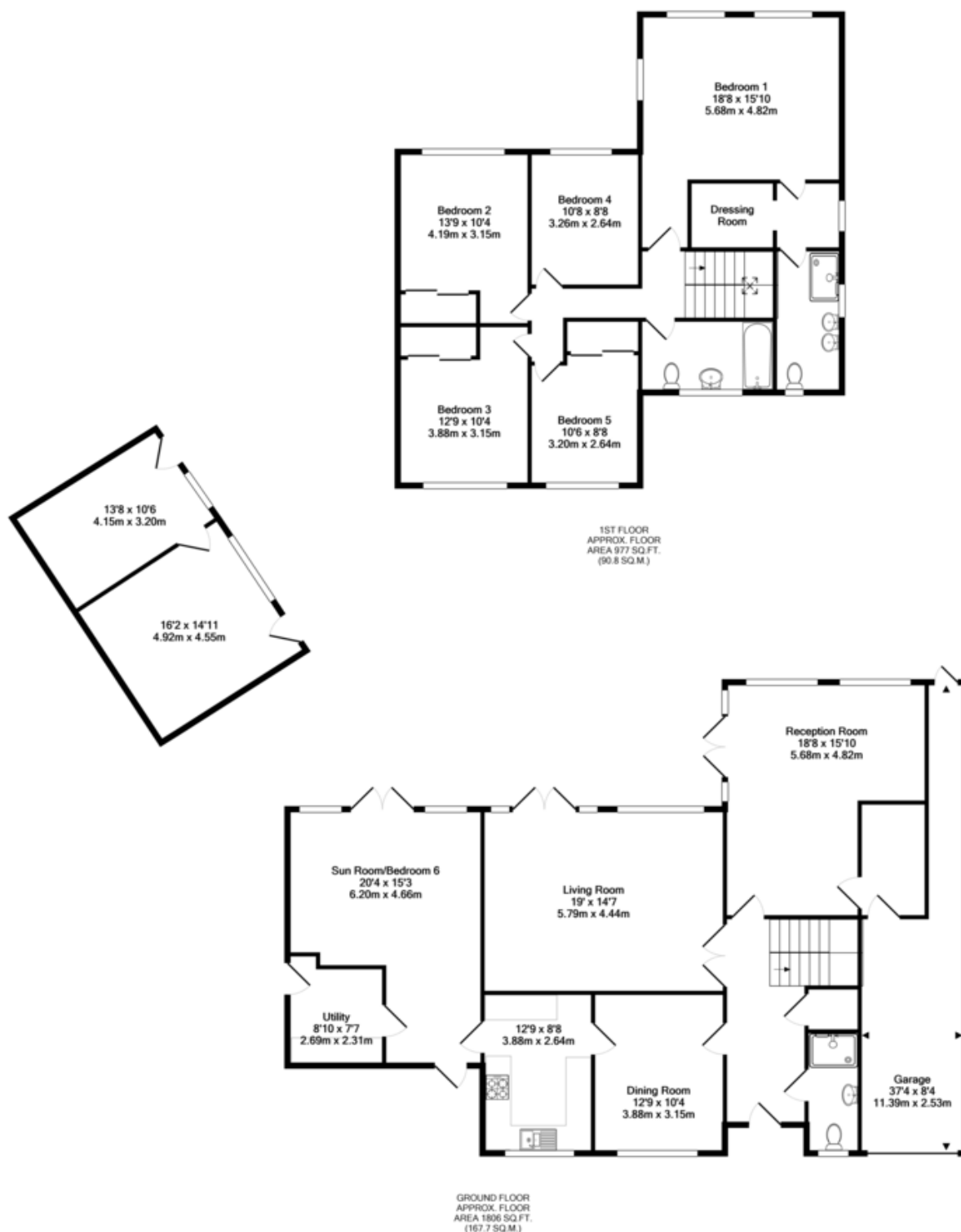
Armand Close is a collection of eight detached houses in a quiet, leafy cul-de-sac which is just 458 metres to Nascot Wood Junior School. Watford Junction Station and the town centre are within walking distance and the A41, M1 and M25 are all a short drive away.

Key Features:

- + Five Bedrooms
- + Three Receptions
- + Three Bathrooms
- + Stunning Garden
- + Off Street Parking For Several Cars
- + Integral Garage







Whilst every attempt has been made to ensure the accuracy of the floor plan contained here, measurements of doors, windows, rooms and any other items are approximate and no responsibility is taken for any error, omission, or mis-statement. The services, systems and appliances shown have not been tested and no guarantee as to their operability or efficiency can be given. Total floor areas will include any garage(s) where applicable.

Made with Metropix ©2022