

Blackadders



67 Easter Langside Drive
Dalkeith EH22 2FR

Offers Over
£215,000

Lounge

Separate Kitchen/Diner

3 Bedrooms
(Master En Suite)

Bathroom

WC

Double Glazing & GCH

Private Gardens

Parking

Viewing: By appointment through selling agent on 0131 202 1868

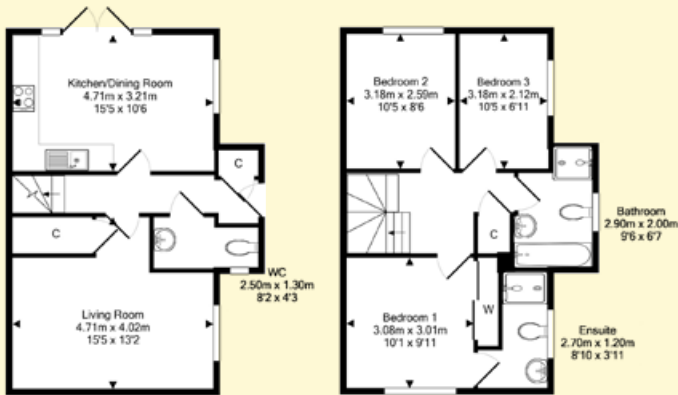
DESCRIPTION

A stunning end terrace family home set in a modern and sought after development well placed for commuting which has good day to day amenities nearby.

The property benefits from gas central heating and is fully double glazed. Externally there are very well maintained private gardens.

LOCATION

The popular Midlothian town of Dalkeith lies within easy commuting distance of Edinburgh. There is a good range of shopping outlets on hand whilst further shopping is available in nearby Bonnyrigg. The immediate vicinity lends itself to restful country walks, including within Dalkeith Country Park, and there is a choice of golf courses. Schooling is well represented from nursery to senior level, with the Jewel & Esk College's Midlothian Campus also easily accessible. An efficient public transport network is on hand, which operates to other areas and the Borders Railway link has a station at nearby Eskbank.



Ground Floor

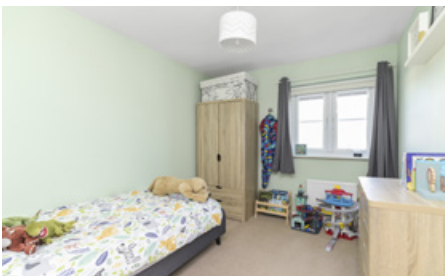
First Floor

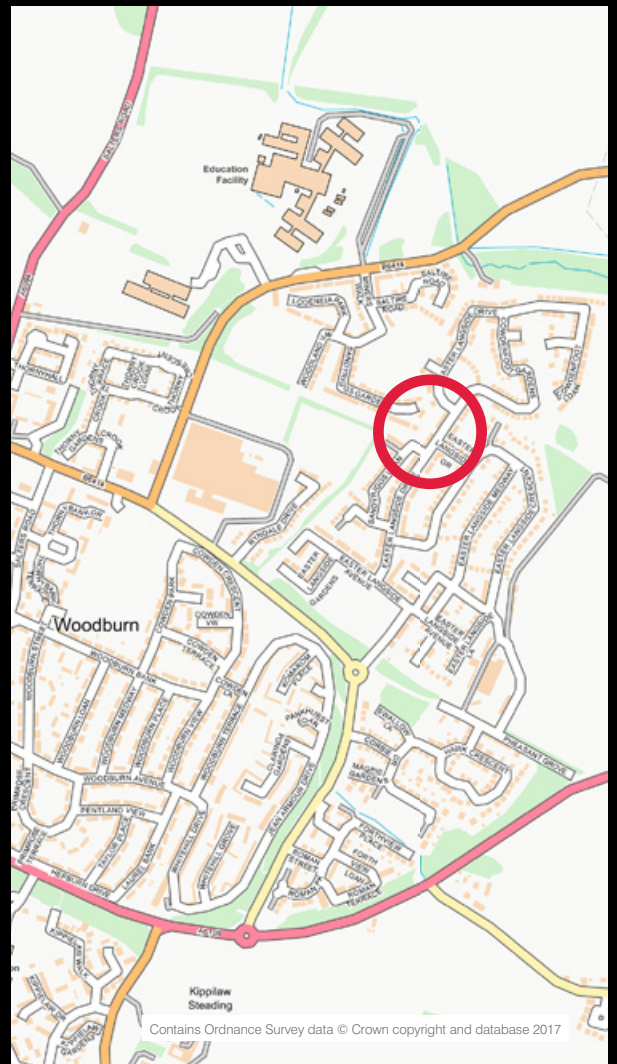
ACCOMMODATION

(measurements are approx)

Lounge	15'5" x 13'2"	4.71 x 4.02m
Kitchen/Diner	15'5" x 10'6"	4.71 x 3.21m
Bedroom 1	10'1" x 9'11"	3.08 x 3.01m
En Suite	8'10" x 3'11"	2.70 x 1.20m
Bedroom 2	10'5" x 8'6"	3.18 x 2.59m
Bedroom 3	10'5" x 6'11"	3.18 x 2.12m
Bathroom	9'6" x 6'7"	2.90 x 2.00m







Blackadders



ABERDEEN

37 Langstane Place
Aberdeen
AB11 6EN
Tel: 01224 452750

ARBROATH

129 High Street
Arbroath
DD11 1DP
Tel: 01241 876620

DUNDEE

30 & 34 Reform Street
Dundee
DD1 1RJ
Tel: 01382 342222

EDINBURGH

40 Torphichen Street
Edinburgh
EH3 8JB
Tel: 0131 202 1868

PERTH

77 George Street
Perth
PH1 5LB
Tel: 01738 500600

property@blackadders.co.uk • www.blackadders.co.uk

DISCLAIMER. Entry by mutual arrangement. Viewing strictly through selling agents. Whilst we endeavour to make these particulars as accurate as possible, they do not form any part of any contract or offer nor are they guaranteed. Measurements are approximate and in most cases are taken with a digital tape. If there is any part of these particulars that you find misleading or simply wish clarification on, please contact our office for assistance.