

Blackadders

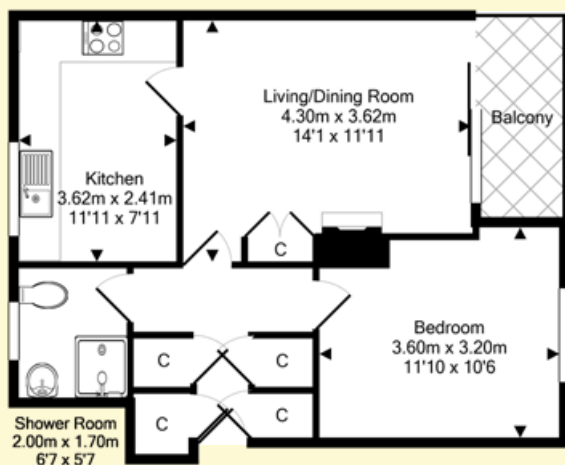


27/2 Northfield Drive
Edinburgh EH8 7RJ

Offers Over
£105,000

Lounge/Diner (Balcony
Off)
Kitchen
Double Bedroom

Wet Room
GCH & D/G
Communal Gardens



ACCOMMODATION

(measurements are approx)

Lounge/Diner	14'1 x 11'11	4.30 x 3.62m
Kitchen	11'11 x 7'11	3.62 x 2.41m
Bedroom	11'10 x 10'6	3.60 x 3.20m
Wet Room	6'7 x 5'7	2.00 x 1.70m

Viewing: By appointment through selling agent on 0131 202 1868

DESCRIPTION

A very well presented ground floor flat set in a popular and sought after location close to amenities and well placed for commuting.

The property benefits from gas central heating and is double glazed. Externally there are communal gardens to the rear.

LOCATION

The popular Northfield area of Edinburgh lies to the east of the city centre. There is an excellent range of shopping outlets in the vicinity, including a Morrisons Superstore at Portobello Road. Further shops, banks and postal services can be found at Jock's Lodge, Meadowbank and Portobello, all locations being easily accessible. For the sports conscious Meadowbank Stadium (which is currently being redeveloped) is close by. Schooling is well represented from nursery to senior level, with Duddingston and St John's primaries and Portobello and Holy Rood secondaries. An efficient public transport network operates to most parts of the town and surrounding areas. The city bypass and main motorway networks are also within easy reach.







Blackadders



ABERDEEN

37 Langstane Place
Aberdeen
AB11 6EN
Tel: 01224 452750

ARBROATH

129 High Street
Arbroath
DD11 1DP
Tel: 01241 876620

DUNDEE

30 & 34 Reform Street
Dundee
DD1 1RJ
Tel: 01382 342222

EDINBURGH

40 Torphichen Street
Edinburgh
EH3 8JB
Tel: 0131 202 1868

PERTH

77 George Street
Perth
PH1 5LB
Tel: 01738 500600

property@blackadders.co.uk • www.blackadders.co.uk

DISCLAIMER. Entry by mutual arrangement. Viewing strictly through selling agents. Whilst we endeavour to make these particulars as accurate as possible, they do not form any part of any contract or offer nor are they guaranteed. Measurements are approximate and in most cases are taken with a digital tape. If there is any part of these particulars that you find misleading or simply wish clarification on, please contact our office for assistance.