



NORTHFIELD
HOUSE

A CONTEMPORARY COLLECTION OF
1 & 2 BEDROOM RENTAL APARTMENTS

MAKE YOURSELF AT HOME

Discover Northfield House, a contemporary collection of 74 newly developed apartments in the heart of Southend-on-Sea, Essex.

Northfield House offers urban living at its best, with residents benefiting from its prime location and open plan practical living spaces.

The development is ideally located with quick access to the A127 for the M25.

Southend Victoria and Southend Central provide a direct link to Central London in an hour. Plus, London Southend Airport is less than three miles away.

When you want to unwind, you can admire the Essex coastline from the seafront, venture to one of the many local nature reserves, indulge in some retail therapy on the high street or soak up the culture with a cappuccino from one of Southend's independent cafés.



URBAN STYLE APARTMENTS FOR MODERN LIVING

Northfield House is home to a modern collection of 1 and 2 bedroom apartments.

Ideal for professionals, these apartments benefit from their central town location and all of its amenities.

Each apartment is designed for functional living, complete with quality fixtures, fittings and integrated appliances.

At Northfield House, you'll find an apartment that fully complements your lifestyle.

VIBRANT TOWN LIFE

Everything you need is just a walk, cycle or drive away.

You'll find major supermarkets, shopping centres and high street stores close by. Other local amenities, including medical services, are easily accessible from Northfield House, while Southend is also home to a University of Essex campus.

Residents will love the attractions on offer around the town, including a cinema, art galleries and two theatres. Further along the coastline is the traditional fishing town of Leigh-on-Sea, which boasts a trendy social scene, complete with independent eateries, bars and boutiques to explore.



COMMUTER CONNECTIONS

Easy reach to road and railway connections makes Northfield House the ideal base for journeys to London and beyond.

For residents needing a reliable route to the capital, Northfield House benefits from two railway stations in close proximity.

A few minutes' walk from Northfield House, Southend Victoria railway station provides a direct link to London Liverpool Street. Southend Central railway station gives commuters another route into London, arriving at London Fenchurch Street in just over an hour.

For international travellers, London Southend Airport - 10 minutes away by car - has routes to over 40 destinations and counting.



GROUND FLOOR

Featuring a selection of contemporary one and two bedroom apartments, cycle storage and bin store for residents' use.



Apartment 01 1 bedroom living / dining / kitchen bathroom	35m²	Apartment 10 1 bedroom living / dining / kitchen bathroom	30m²
Apartment 02 1 bedroom living / dining / kitchen bathroom	35m²	Apartment 11 1 bedroom living / dining / kitchen bathroom	35m²
Apartment 03 1 bedroom living / dining / kitchen bathroom	36m²	Apartment 12 1 bedroom living / dining / kitchen bathroom	37m²
Apartment 04 1 bedroom living / dining / kitchen bathroom	36m²	Apartment 13 1 bedroom living / dining / kitchen bathroom	32m²
Apartment 05 1 bedroom living / dining / kitchen bathroom	36m²	Apartment 14 1 bedroom living / dining / kitchen bathroom	32m²
Apartment 06 1 bedroom living / dining / kitchen bathroom	41m²	Apartment 15 1 bedroom living / dining / kitchen bathroom	33m²
Apartment 07 1 bedroom living / dining / kitchen bathroom	35m²	Apartment 16 1 bedroom living / dining / kitchen bathroom	33m²
Apartment 08 1 bedroom living / dining / kitchen bathroom	30m²	Apartment 17 2 bedrooms living / dining / kitchen bathroom	45m²
Apartment 09 1 bedroom living / dining / kitchen bathroom	30m²		

The plans and measurements shown are for general guidance and for illustration purposes only and are subject to change. Dimensions are based on the longest measurable distance in two directions across each space subject to the shape of the space. Areas are based on the measured perimeter of the space. All figures are based on drawn information. Although as accurate as possible at the time of publication they cannot be relied upon for complete accuracy and do not constitute a contract or warranty. September 2019.

1ST & 2ND FLOORS

Home to a selection of one and two bedroom apartments accessible by lift and stairs, complete with open plan living areas and integrated appliances.



Apartment 18 1 bedroom living / dining / kitchen bathroom	35m²	Apartment 28 1 bedroom living / dining / kitchen bathroom	34m²	Apartment 38 1 bedroom living / dining / kitchen bathroom	31m²
Apartment 19 1 bedroom living / dining / kitchen bathroom	36m²	Apartment 29 1 bedroom living / dining / kitchen bathroom	41m²	Apartment 39 1 bedroom living / dining / kitchen bathroom	34m²
Apartment 20 1 bedroom living / dining / kitchen bathroom	36m²	Apartment 30 1 bedroom living / dining / kitchen bathroom	30m²	Apartment 40 1 bedroom living / dining / kitchen bathroom	33m²
Apartment 21 1 bedroom living / dining / kitchen bathroom	36m²	Apartment 31 2 bedrooms living / dining / kitchen bathroom	40m²		
Apartment 22 1 bedroom living / dining / kitchen bathroom	36m²	Apartment 32 1 bedroom living / dining / kitchen bathroom	32m²		
Apartment 23 1 bedroom living / dining / kitchen bathroom	41m²	Apartment 33 1 bedroom living / dining / kitchen bathroom	30m²		
Apartment 24 1 bedroom living / dining / kitchen bathroom	35m²	Apartment 34 1 bedroom living / dining / kitchen bathroom	34m²		
Apartment 25 1 bedroom living / dining / kitchen bathroom	30m²	Apartment 35 1 bedroom living / dining / kitchen bathroom	34m²		
Apartment 26 1 bedroom living / dining / kitchen bathroom	30m²	Apartment 36 1 bedroom living / dining / kitchen bathroom	34m²		
Apartment 27 1 bedroom living / dining / kitchen bathroom	30m²	Apartment 37 1 bedroom living / dining / kitchen bathroom	34m²		

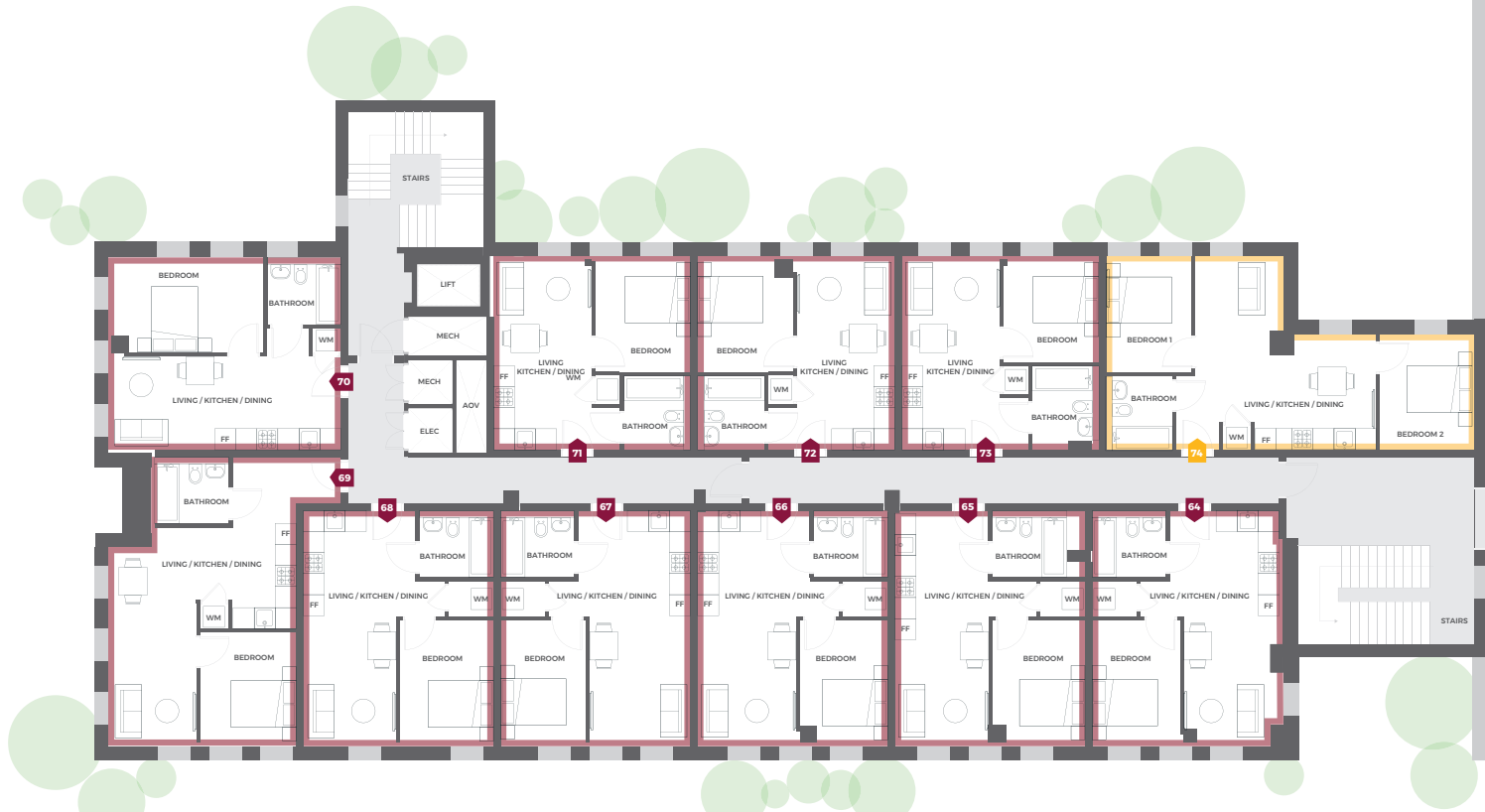
2nd Floor
Apartments shown are for the first floor, sizes may vary slightly on 2nd floor, individual apartment sizes can be supplied on request.

■ 1 bedroom apartment ■ 2 bedroom apartment

The plans and measurements shown are for general guidance and are subject to change. Dimensions are based on the longest measurable distance in two directions across each space subject to the shape of the space. Areas are based on the measured perimeter of the space. All figures are based on drawn information. Although as accurate as possible at the time of publication they cannot be relied upon for complete accuracy and do not constitute a contract or warranty. September 2019.

3RD FLOOR

The top floor features a selection of one and two bedroom apartments accessible by lift and stairs, complete with open plan living areas and integrated appliances.



Apartment 64 1 bedroom living / dining / kitchen bathroom	35m²	Apartment 70 1 bedroom living / dining / kitchen bathroom	35m²
Apartment 65 1 bedroom living / dining / kitchen bathroom	36m²	Apartment 71 1 bedroom living / dining / kitchen bathroom	30m²
Apartment 66 1 bedroom living / dining / kitchen bathroom	36m²	Apartment 72 1 bedroom living / dining / kitchen bathroom	30m²
Apartment 67 1 bedroom living / dining / kitchen bathroom	36m²	Apartment 73 1 bedroom living / dining / kitchen bathroom	30m²
Apartment 68 1 bedroom living / dining / kitchen bathroom	36m²	Apartment 74 2 bedrooms living / dining / kitchen bathroom	44m²
Apartment 69 1 bedroom living / dining / kitchen bathroom	41m²		

The plans and measurements shown are for general guidance and for illustration purposes only and are subject to change. Dimensions are based on the longest measurable distance in two directions across each space subject to the shape of the space. Areas are based on the measured perimeter of the space. All figures are based on drawn information. Although as accurate as possible at the time of publication they cannot be relied upon for complete accuracy and do not constitute a contract or warranty. September 2019.



THE HUB OF SOUTHEND

Here at Northfield House, you are set right in the heart of town. From your essential amenities and travel links to your hobbies and interests, Southend and its surrounding areas have you covered.





TO BOOK A VIEWING
OR FOR MORE INFORMATION,
CONTACT US ON
01702 343 060


WWW.NORTHFIELD-HOUSE.CO.UK



URBAN LIVING AT NORTHFIELD HOUSE

Northfield House is home to a contemporary collection of 74 apartments set within the well-connected hub of Southend-on-Sea.

Discover our selection of 1 and 2 bedroom apartments to rent today.

FOR MORE INFORMATION,
CONTACT US ON

01702 343 060

living@northfield-house.co.uk



NORTHFIELD
HOUSE

110-114 Baxter Avenue, Southend-on-Sea, Essex SS2 6FG

WWW.NORTHFIELD-HOUSE.CO.UK

Letting Agent



Ayers & Cruiks
residential