



A stunning detached family home

Contemporary modern kitchen

Large conservatory over looking the gardens

Converted garage space

Master with fitted wardrobes and ensuite shower room

Beautifully presented lounge and versatile second reception

Three light and airy bedrooms

Ideal family home

Large double driveway

Sought after location

Nestled in the highly desirable area of The Highlands in Whitehaven, this stunning family home boasts an impeccable interior, with chic modern décor and stylish LVT flooring. Situated within a tranquil residential haven, residents relish in convenient proximity to the town of Whitehaven and its neighbouring towns via the nearby A595. The heart of the town and local schools are just a short drive away, making daily errands a breeze.

On the ground floor, revel in the versatility of a converted garage that now serves as a second reception room adjoining the spacious lounge. Wander further to discover a generously sized conservatory at the rear, offering a serene spot to unwind or host gatherings with loved ones.

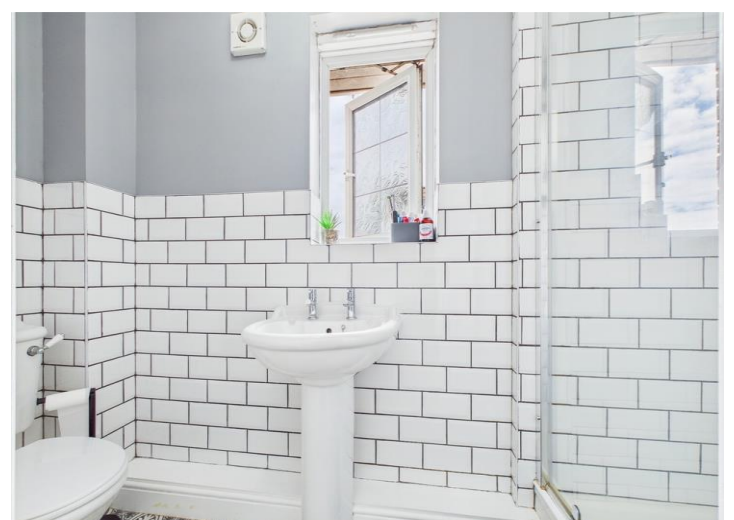
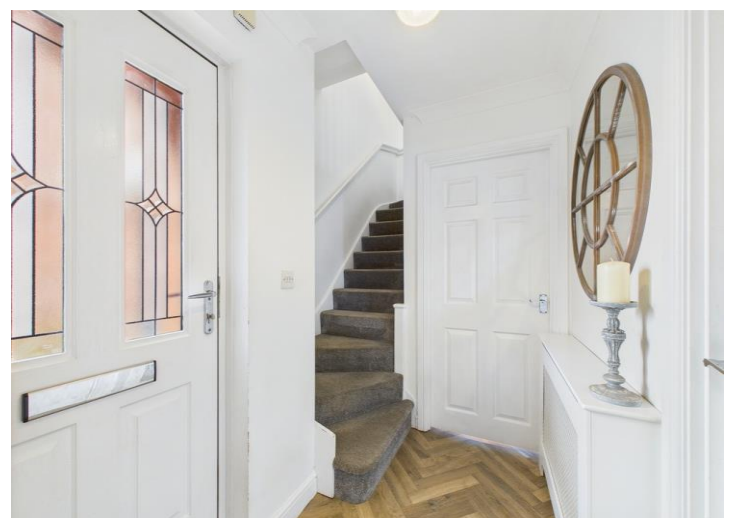
The lounge exudes charm with its contemporary finishes, neutral hues, and patio doors that seamlessly connect to the conservatory. Meanwhile, the modern kitchen beckons with cream units, wooden countertops, and a suite of built-in appliances.

Ascending to the first floor, three light and airy bedrooms await, each impeccably presented, with the master bedroom boasting its private ensuite shower room and fitted wardrobes for added convenience. A stylish family bathroom serves the remaining bedrooms, complementing the ground floor WC effortlessly.

Outside, the property shines with kerb appeal, flaunting serene sea views upon arrival and a spacious driveway for two vehicles that leads to a storage garage. At the rear, a good size, low-maintenance garden beckons, featuring two patio areas, a lush lawn, and secure fencing, perfect for pets and little ones to roam freely. Enveloped within a peaceful neighbourhood and exuding a refined finish, this extraordinary home epitomises modern family living at its finest in a sought after location. Call today for a viewing



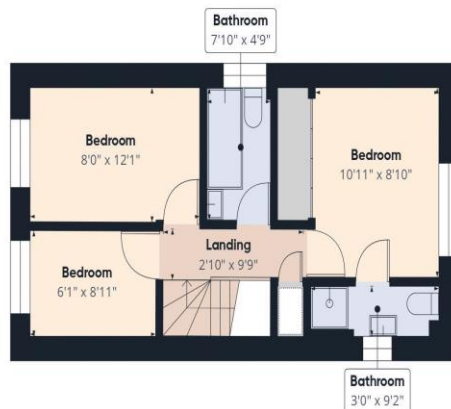








Ground Floor



Floor 1



Approximate total area^m
1032 ft²

(1) Excluding balconies and terraces

While every attempt has been made to ensure accuracy, all measurements are approximate, not to scale. This floor plan is for illustrative purposes only.

Calculations are based on RICS IPMS 3C standard.

GIRAFFE360