



A luxurious bungalow in like new condition built by John Swift Homes in 2021

Backed by open countryside and boasts views towards the sea

Elegant and modern design with all the modern comforts

Two spacious, light and airy double bedrooms, the master boasting fitted wardrobes

Spacious driveway and private, sun trap garden with large patio

Nestled in a elevated position on a highly sought-after estate with homes rarely coming on to the market

Finished to the highest of standards with LVT flooring, and luxurious fixtures and fittings

Impressive open plan kitchen/diner and living area

Beautiful bathroom suite and stylish master ensuite shower room

Just a few minutes drive to Whitehaven town centre with its wide range of shops and amenities

Nestled in an exclusive elevated position upon a prestigious estate, this luxurious bungalow built by John Swift Homes in 2021 is a rare gem in the realm of real estate. Boasting a location that is as rare as it is sought-after, this property sits majestically backed by open countryside with captivating views stretching towards the glistening sea. As you step into this pristine home, you are greeted by an ambience of sophistication and style. The interior exudes a sense of opulence, having been meticulously finished to the highest of standards with every detail carefully considered. The gleaming LVT flooring underfoot speaks to the quality that lies within, while the luxurious fixtures and fittings throughout the home create an atmosphere of refinement and elegance.

The heart of the home is a truly striking open plan kitchen/diner and living area that serves as a focal point for both entertaining and every-day living. The kitchen is a chef's dream, equipped with integrated appliances and a spacious island featuring a built-in breakfast bar – the perfect spot for casual dining or enjoying your morning coffee. The living area, with its vaulted ceiling and abundance of natural light, offers a seamless transition to the outdoor patio through French doors, creating an effortless indoor-outdoor flow that is ideal for both relaxation and hosting gatherings.

This impeccable residence features two generously proportioned double bedrooms, each offering a sanctuary of tranquillity and comfort. The master bedroom is a haven of serenity, complete with fitted wardrobes providing ample storage space. The accompanying bathroom suite exudes luxury and style, while the master ensuite shower room is a study in modern sophistication – a private sanctuary for unwinding after a long day.

Outside, the property continues to impress with a spacious driveway providing ample parking space for multiple vehicles, while the private garden offers a sun-soaked retreat with a large patio perfect for al fresco dining or simply basking in the tranquillity of the surroundings.

Located just a stone's throw away from Whitehaven town centre, residents can enjoy easy access to a plethora of shops, restaurants, and amenities, ensuring that convenience is always close at hand. Additionally, Whitehaven marina is a mere 10-minute drive away, offering opportunities for leisurely strolls along the historic piers or indulging in a leisurely coffee while soaking in the picturesque views.

In conclusion, this remarkable property represents the epitome of premium living, seamlessly blending modern comforts with timeless elegance in a location that is second to none. With its impeccable design, impeccable finishes, and unparalleled location, this bungalow offers a unique opportunity to experience the height of luxury living in a truly exceptional setting.



SELLING WITH FIRST CHOICE MOVE

First Choice Move began in 2010 from humble beginnings—from a kitchen table in Egremont. Built on family values, hard work, and a passion for property, we have grown to become the largest estate agency in West Cumbria. As a family-run business, we believe in combining traditional estate agency values with the very latest marketing techniques to ensure every property gets maximum exposure. From high-quality photography, 3D tours, drone photography, videos and professional floorplans to online advertising and social media campaigns, we use a tailored approach to attract the right buyers. Our commitment to excellence has earned us multiple national, industry-recognised awards, a testament to our dedication to delivering outstanding service and results. We are more than just an estate agency—we're a trusted partner for buyers and sellers across West Cumbria, combining innovation with personal service to help you move with confidence.

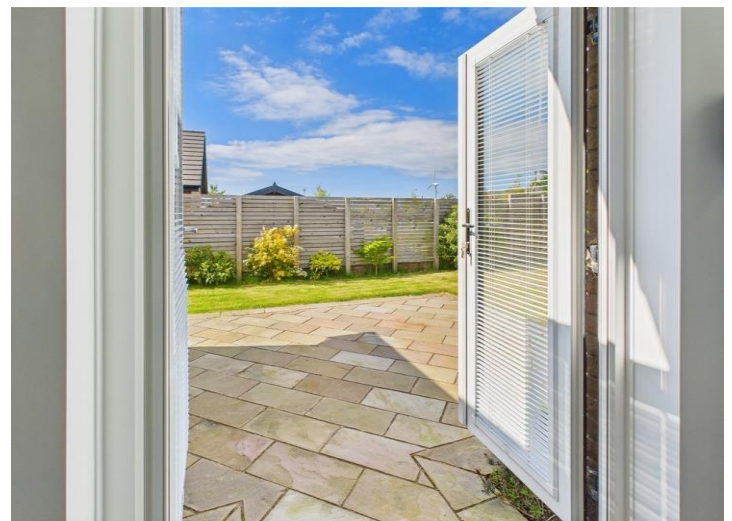
MORTGAGES

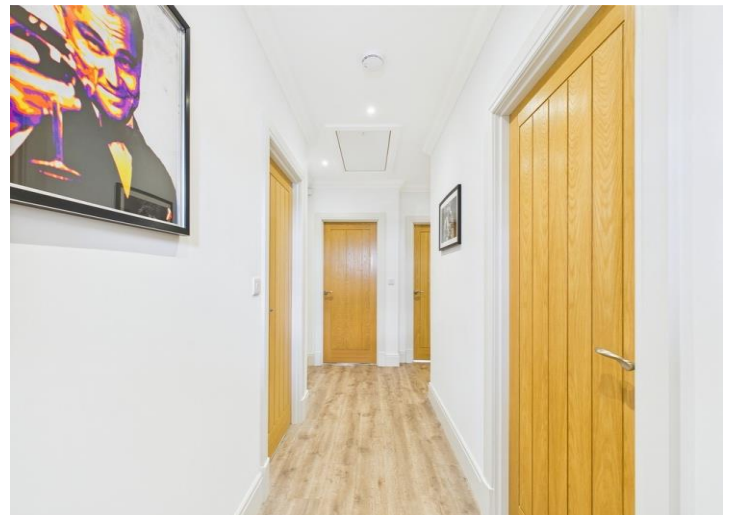
Need help finding the right mortgage for your needs? First Choice Move Mortgage Services are part of the Mortgage Advice Bureau network, one of the UK's largest award-winning mortgage brokers. We can search from a selection of over 90 different lenders with over 12,000 different mortgages, including exclusive deals only available through us, to find the right deal for you. Our advice will be specifically tailored to your needs and circumstances, which could be for a first-time buyer, home-mover, or for remortgaging or investing in property. Contact us on 01946 413001 to arrange a free consultation with one of our experienced and dedicated in house mortgage and protection advisers. You may have to pay an early repayment charge to your existing lender if you re-mortgage. There may be a fee for mortgage advice. The actual amount you pay will depend upon your circumstances. The fee is up to 1% but a typical fee is 0.3% of the amount borrowed.

NOTE

Please note that all measurements have been taken using a laser tape measure which may be subject to a small margin of error. Some photos may have been taken with a wide-angle camera lens. First Choice Move has not tested any apparatus, equipment, fixtures and fittings or services and so cannot verify that they are in working order or fit for the purpose. A buyer is advised to obtain verification from their solicitor or surveyor. References to the tenure of a property are based on information supplied by the Seller. The Agent has not had sight of the title documents.

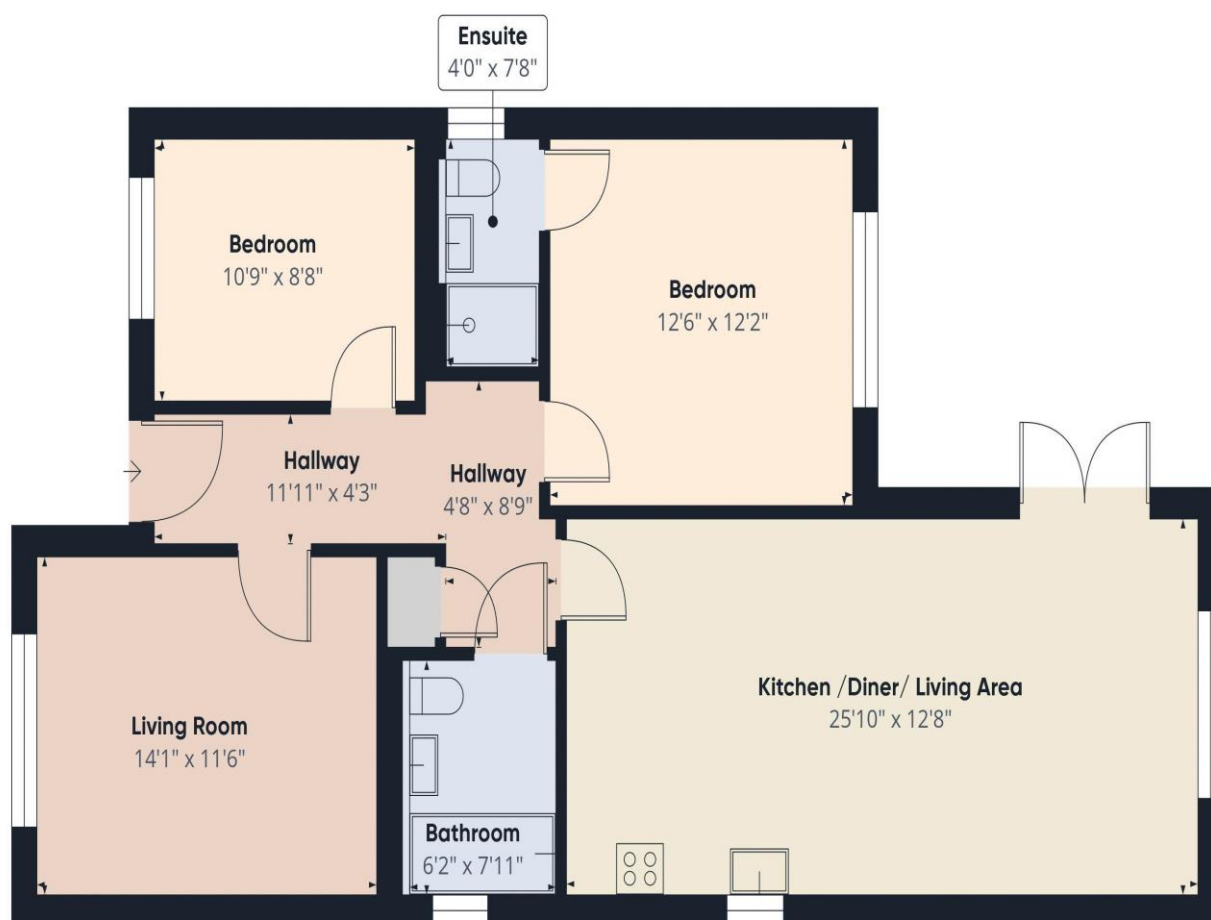












Approximate total area^m
932 ft²

(1) Excluding balconies and terraces

While every attempt has been made to ensure accuracy, all measurements are approximate, not to scale. This floor plan is for illustrative purposes only.

Calculations are based on RICS IPMS 3C standard.

GIRAFFE360