



A perfect home for a first time buyer, couple of those starting a family

Spacious lounge boasting French doors leading out to the garden

Two spacious bedrooms both featuring fitted wardrobes

Benefits from private parking

Offers excellent value for money

Fantastic condition, neutral décor and ready to move into

Modern kitchen in great condition

Modern bathroom suite plus downstairs WC

Low maintenance garden to the rear

Quiet residential area within a village location

Welcome to your next home! This 2-bedroom end of terrace house is the perfect spot for a first-time buyer, a couple looking to settle down, or a small family starting their next chapter. Step inside, and you'll find yourself in a fantastic condition property with neutral décor that's ready for you to move right in!

The spacious lounge is a real highlight, featuring French doors that open out to the garden, flooding the room with natural light and creating a seamless indoor-outdoor flow. The modern kitchen is in great condition, offering plenty of space for whipping up your favourite meals to enjoy in the dining area. Upstairs, you'll find two generously sized bedrooms, both equipped with fitted wardrobes for all your storage needs. The modern bathroom suite is perfect for relaxing after a long day, and there's also a convenient downstairs WC for guests.

One of the standout features of this property is the private parking, ensuring you never have to worry about finding a space when you come home. The low-maintenance garden to the rear is a peaceful oasis, complete with a new shed for storage and securely fenced around for privacy. Situated in a quiet residential area within a charming village location, this home offers excellent value for money. Need to venture further afield? No problem – the towns of Whitehaven, Egremont, and Cleator Moor are just a short 10-minute drive away, offering a range of amenities, shops, and dining options.

Don't miss out on your chance to make this house your home sweet home – schedule a viewing today and take the first step towards your next adventure in this cosy and welcoming property!



SELLING WITH FIRST CHOICE MOVE

First Choice Move began in 2010 from humble beginnings—from a kitchen table in Egremont. Built on family values, hard work, and a passion for property, we have grown to become the largest estate agency in West Cumbria. As a family-run business, we believe in combining traditional estate agency values with the very latest marketing techniques to ensure every property gets maximum exposure. From high-quality photography, 3D tours, drone photography, videos and professional floorplans to online advertising and social media campaigns, we use a tailored approach to attract the right buyers. Our commitment to excellence has earned us multiple national, industry-recognised awards, a testament to our dedication to delivering outstanding service and results. We are more than just an estate agency—we're a trusted partner for buyers and sellers across West Cumbria, combining innovation with personal service to help you move with confidence.



MORTGAGES

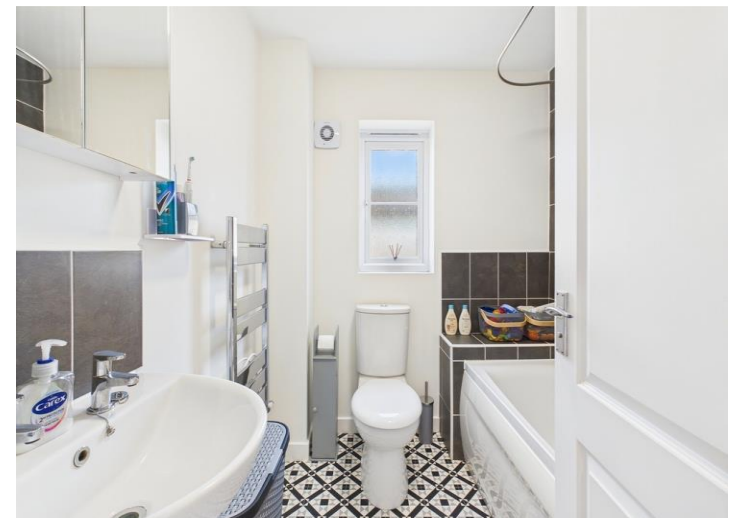
Need help finding the right mortgage for your needs? First Choice Move Mortgage Services are part of the Mortgage Advice Bureau network, one of the UK's largest award-winning mortgage brokers. We can search from a selection of over 90 different lenders with over 12,000 different mortgages, including exclusive deals only available through us, to find the right deal for you. Our advice will be specifically tailored to your needs and circumstances, which could be for a first-time buyer, home-mover, or for remortgaging or investing in property. Contact us on 01946 413001 to arrange a free consultation with one of our experienced and dedicated in house mortgage and protection advisers. You may have to pay an early repayment charge to your existing lender if you re-mortgage. There may be a fee for mortgage advice. The actual amount you pay will depend upon your circumstances. The fee is up to 1% but a typical fee is 0.3% of the amount borrowed.



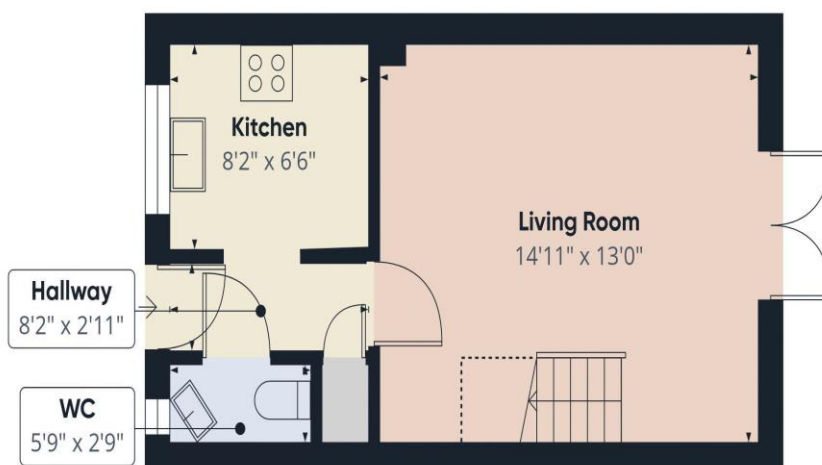
NOTE

Please note that all measurements have been taken using a laser tape measure which may be subject to a small margin of error. Some photos may have been taken with a wide-angle camera lens. First Choice Move has not tested any apparatus, equipment, fixtures and fittings or services and so cannot verify that they are in working order or fit for the purpose. A buyer is advised to obtain verification from their solicitor or surveyor. References to the tenure of a property are based on information supplied by the Seller. The Agent has not had sight of the title documents.

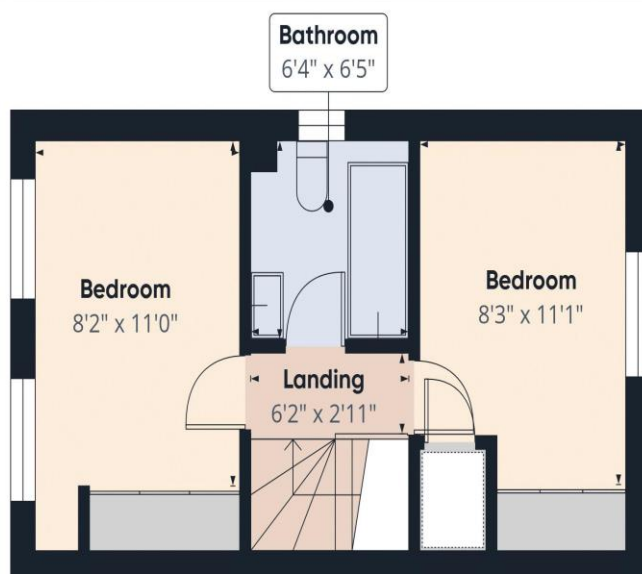








Ground Floor



Floor 1

Approximate total area⁽¹⁾

563 ft²

Reduced headroom

13 ft²

(1) Excluding balconies and terraces

Reduced headroom

..... Below 5 ft

While every attempt has been made to ensure accuracy, all measurements are approximate, not to scale. This floor plan is for illustrative purposes only.

Calculations are based on RICS IPMS 3C standard.

GIRAFFE360