



Nestled directly adjacent to the beach, with extensive views across the Solway Firth, towards Scotland

Perfect for those who enjoy the coasts, gentle walks or bird watching

Enjoy mesmerising views from all front windows, which are tilt and turn, allowing you to completely open them

Beautiful kitchen in excellent condition, the window looks down the coasts

Two spacious, eye catching double bedrooms, one

Located in the village of picturesque Skinburness

Located in "The Longhouse", a building steeped rich in history dating back to 1770

Spacious open plan lounge & diner with designer radiators, feature fireplace and a total of three windows, all with views

Delightful bathroom which is in excellent condition

Parking place and plenty of visitor parking. Communal seating area by the beach

Nestled directly adjacent to the beach in the stunning village of Skinburness, this exquisite 2-bedroom apartment offers a unique opportunity to immerse yourself in the serene beauty of the Solway Firth, with captivating views stretching across to Scotland. Situated near an area of Special Scientific Interest, this coastal haven boasts unspoilt landscapes, inviting you to explore miles of pristine shoreline ideal for invigorating walks and birdwatching escapades. Just north of Skinburness lies the sandy expanse of Grune Point, a raised shingle beach beckoning you to relax and unwind in its natural splendour.

Perched within "The Longhouse", a historic structure steeped in tales from 1770, this apartment resonates with charm and character. Once serving as an anchorage for boats, this building is rumoured to have inspired the setting of Sir Walter Scott's famed work "Redgauntlet". The apartment itself presents an array of delights, from the mesmerising oceanic views that flood through the tilt and turn windows to the beautifully appointed kitchen framing coastal panoramas. Step into the open plan lounge and dining area, where designer radiators, a feature fireplace, and three windows welcome the natural light and expansive vistas into your living space. The two spacious double bedrooms offer comfort and tranquillity, with one particularly showcasing fabulous views that enchant and inspire. With excellent bathroom facilities, a parking spot, ample visitor parking, and a communal seating area overlooking the beach, this home epitomises coastal sophistication just minutes away from the historic attractions and conveniences of Silloth. Whether you seek a permanent residence or a holiday retreat, this apartment offers a harmonious blend of modern comfort and natural magnificence.

Outside, a spacious and private communal garden awaits at the side of the building, providing a serene oasis for outdoor gatherings and tranquil moments amidst the coastal beauty. Revel in the joy of outdoor entertaining or simply savour the peaceful ambience of this enchanting haven, perfectly complementing the wonders of coastal living that define this exceptional property.



SELLING WITH FIRST CHOICE MOVE

First Choice Move began in 2010 from humble beginnings—from a kitchen table in Egremont. Built on family values, hard work, and a passion for property, we have grown to become the largest estate agency in West Cumbria. As a family-run business, we believe in combining traditional estate agency values with the very latest marketing techniques to ensure every property gets maximum exposure. From high-quality photography, 3D tours, drone photography, videos and professional floorplans to online advertising and social media campaigns, we use a tailored approach to attract the right buyers. Our commitment to excellence has earned us multiple national, industry-recognised awards, a testament to our dedication to delivering outstanding service and results. We are more than just an estate agency—we're a trusted partner for buyers and sellers across West Cumbria, combining innovation with personal service to help you move with confidence.

MORTGAGES

Need help finding the right mortgage for your needs? First Choice Move Mortgage Services are part of the Mortgage Advice Bureau network, one of the UK's largest award-winning mortgage brokers. We can search from a selection of over 90 different lenders with over 12,000 different mortgages, including exclusive deals only available through us, to find the right deal for you. Our advice will be specifically tailored to your needs and circumstances, which could be for a first-time buyer, home-mover, or for remortgaging or investing in property. Contact us on 01946 413001 to arrange a free consultation with one of our experienced and dedicated in house mortgage and protection advisers. You may have to pay an early repayment charge to your existing lender if you re-mortgage. There may be a fee for mortgage advice. The actual amount you pay will depend upon your circumstances. The fee is up to 1% but a typical fee is 0.3% of the amount borrowed.

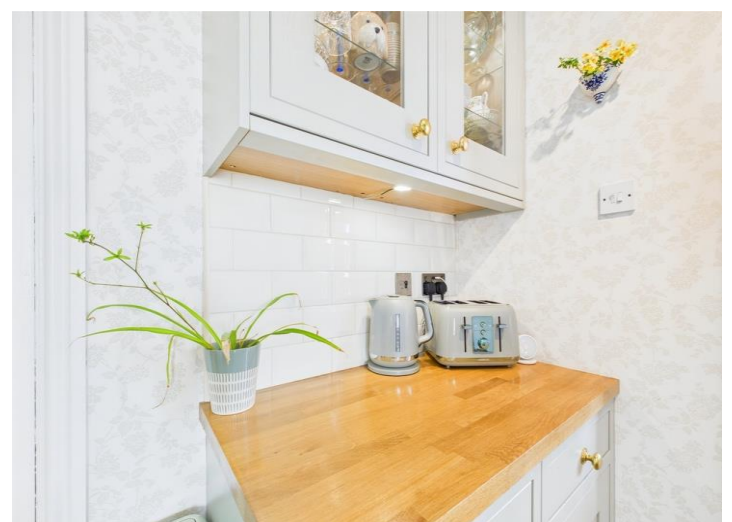
NOTE

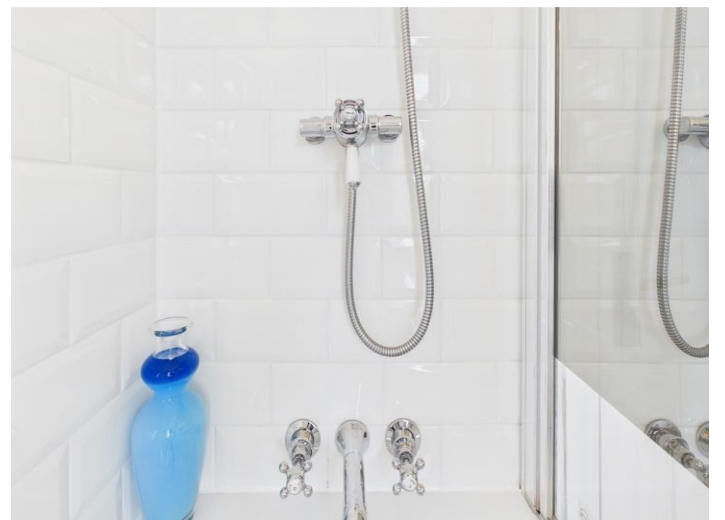
Please note that all measurements have been taken using a laser tape measure which may be subject to a small margin of error. Some photos may have been taken with a wide-angle camera lens. First Choice Move has not tested any apparatus, equipment, fixtures and fittings or services and so cannot verify that they are in working order or fit for the purpose. A buyer is advised to obtain verification from their solicitor or surveyor. References to the tenure of a property are based on information supplied by the Seller. The Agent has not had sight of the title documents.







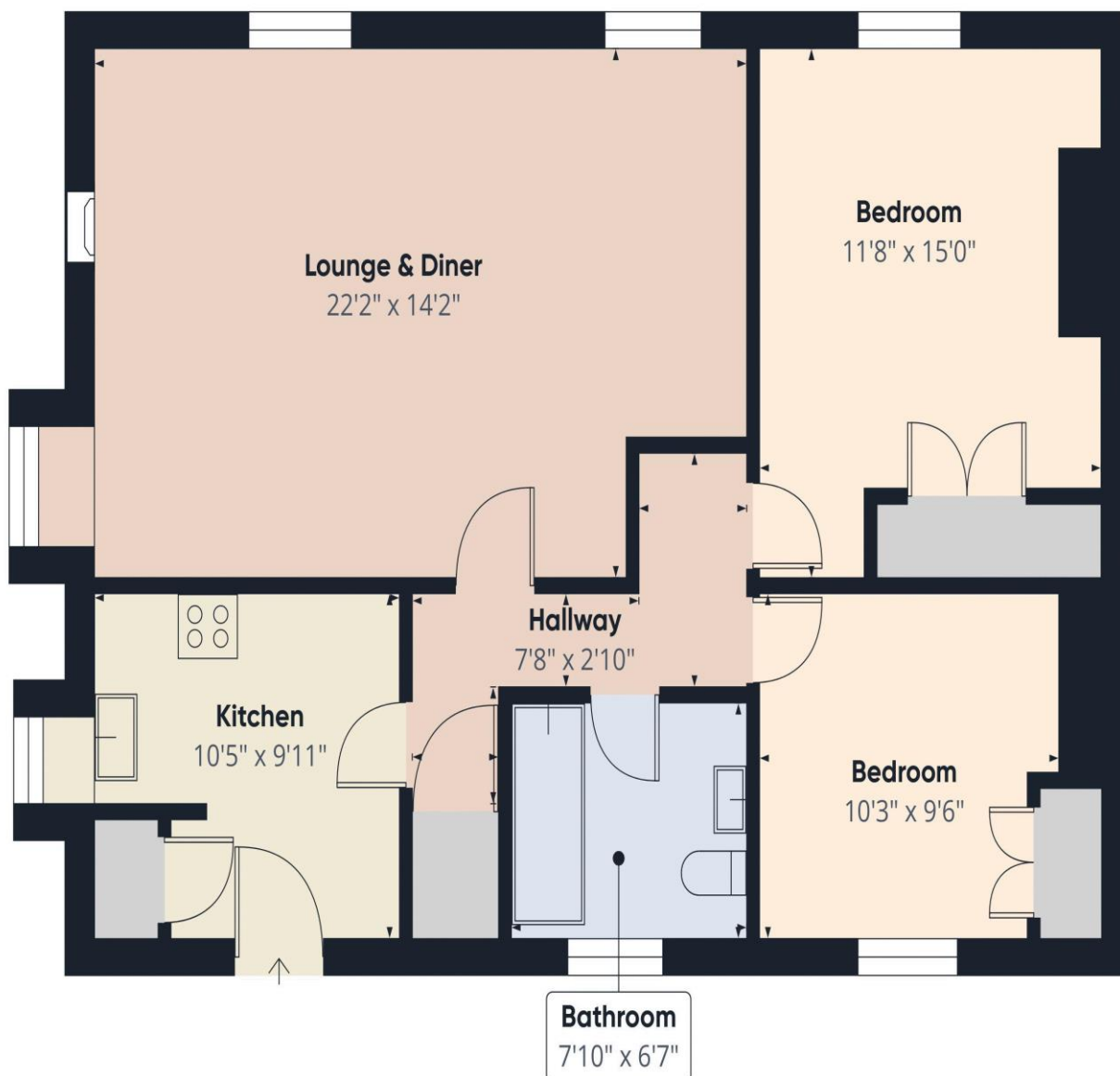












Approximate total area[®]
808 ft²

(1) Excluding balconies and terraces

While every attempt has been made to ensure accuracy, all measurements are approximate, not to scale. This floor plan is for illustrative purposes only.

Calculations were based on RICS IPMS 3C standard. Please note that calculations were adjusted by a third party and therefore may not comply with RICS IPMS 3C.

GIRAFFE360